

**Underwear for
the Underserved
Collection**



see page 2 for details

**Hardware
Happy Hour**

Wednesday, Sept. 10
5:00 pm–8:00 pm

see page 2 for details



Big Green Egg
The Ultimate Cooking Experience



Demonstration
Saturday, September 13
at our Cole Street store, 10:00 am–2:00 pm

COLE HARDWARE'S *Hardware Hotline*

September 2014
NEWS AND VIEWS FROM AROUND THE STORES

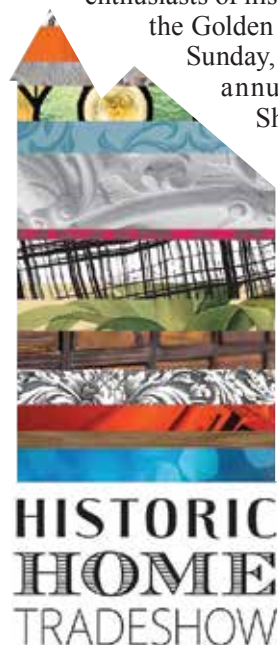
Historic Home Trade Show

Sunday, September 14
12:00 pm–5:00 pm
Golden Gate Club, Presidio

Thousands of homeowners, artisans, tradespeople, contractors, antiques aficionados, and other enthusiasts of historic properties will gather at the Golden Gate Club in the Presidio on Sunday, September 14, for the second annual Historic Home Trade Show. The event is dedicated to the history, restoration, and preservation of San Francisco's historic homes. COLE HARDWARE is proud to be a sponsor of the event. We will have a booth at the show and conduct demonstrations throughout the day.

While Victorian architecture, including the various subgroups such as Italianate, Queen Anne, and Stick, might be the style most popularly associated with San Francisco, many other styles populate the City landscape, including Edwardian, Arts and Crafts, Nouveau, Mediterranean, First Bay Area Tradition, and Gothic, just to name a few. "These special buildings are becoming rare, like old coins, and should be preserved and cared for. Historic homes are well-crafted, intended for entertaining and to be lived in," says Realtor Bonnie Spindler, San Francisco's Victorian specialist and event founder.

For a \$5 entrance fee, there are a wealth of things
continued on page 10...



It's a Great Time to Paint!

September in San Francisco usually brings our most enjoyable weather, an ideal time to enjoy the outdoors. It's also an ideal time to take on a painting project at home, before the holidays and before the rainy season (hopefully) creeps up on us. All COLE HARDWARE locations stock Benjamin Moore® paints, the premier line of paint in the country, with a purposefully limited distribution. With the four

different lines of Benjamin Moore paint that we offer, there is something for everyone. No matter what your room makeover budget, there is a line of Benjamin Moore premium paint for you. (See our current ben® promotion on page 12.) Our paint experts can help you pick the best paint for your needs and price point. And don't forget, painting is a simple and inexpensive way to give a room a fresh new look.

Aura®

Quite simply the finest paint Benjamin Moore produces, Aura, with breakthrough Color Lock® technology, creates a luxurious finish and the richer, truer color desired by discerning homeowners. Aura is unequalled in the marketplace and available in the entire spectrum of the Benjamin Moore color system, including the Affinity Color Collection of 144 designer-inspired colors. The low-VOC formulation offers exceptional, extreme-hide coverage, keeps a freshly painted look for years, and dries quickly. Aura paint provides superior washability along with stain and mildew resistance.

- Extreme-hide coverage
- Very low VOCs
- Mildew resistant
- Color Lock technology for exceptional color—it doesn't fade!
- No color rub-off

- Stains wash off easily
- Easy application in one coat
- Paint and primer together
- Seamless touch-ups
- Excellent in high-traffic areas
- Long-lasting, fresh look



Natura®

Natura premium interior waterborne paint is a zero-VOC (virtually odorless formula) paint that doesn't compromise on performance. Fast-drying Natura also provides excellent adhesion and a durable finish with an
continued on page 2...



"Our commitment to you: Your satisfaction guaranteed. Period."

Shop online 24/7 at ColeHardware.com.

3312 Mission Street
San Francisco, CA 94110-5009

PRSRT STD
U.S. POSTAGE PAID
SAN FRANCISCO, CA
PERMIT #3137

**TIME-SENSITIVE
MATERIAL**



Scan to view
our website.



**SAN FRANCISCO
GREEN
BUSINESS**



Hardware Happy Hour

Wednesday, September 10
5:00 pm–8:00 pm

HAPPY HOUR COUPON

\$10 OFF
ANY \$20+ PURCHASE
DURING HAPPY HOUR

Valid Wednesday, September 10, 5:00 pm–8:00 pm. Offer does not apply to gift cards, Muni passes, Clipper cards, meter cards, special orders, or sale merchandise. Not valid with other coupons or offers. Must be a member or join our Rewards program. One redemption per household.



Join us for Hardware Happy Hour at all COLE HARDWARE locations on Wednesday, September 10. Not only can you enjoy a glass of our Cutting Edge wine and a few bites of our gourmet chocolate, but you can save \$10 on a \$20+ purchase.

Stock up on cleaning supplies or pick up everything you need for a home-improvement project. We hope to see you!

Collection: Underwear for the Underserved

We've all heard the line from our mothers, "Always wear clean underwear in case you're in an accident." And most of us have the luxury of wearing clean underclothes daily. Unfortunately, for thousands of homeless and underserved in San Francisco with no access to laundry facilities, clean underclothes are not a reality.

Along with our friends at **ST. ANTHONY'S** Foundation, all COLE HARDWARE locations will serve as a drop-off site for new underwear during the month of September. For obvious reasons, we can only accept new items in their original, unopened packaging and/or with manufacturer tags. We will be happy to take any new undergarments—including underpants, T-shirts,

socks, and bras. Don't forget children's sizes, too!

In the spirit of St. Francis of Assisi, the mission of St. Anthony Foundation is to feed, heal, shelter, clothe, lift the spirits of those in need, and create a society in which all people flourish. They are committed to providing the poor of San Francisco with basic needs and services as a gateway to reclaiming their sense of dignity and progressing toward stability.

No need for designer duds, plain tighty whities will be gratefully accepted!

Donations accepted at any COLE HARDWARE throughout September.



Solé Gourmet™ Gas Grill

While Labor Day signals the last hurrah of summer and barbecue season for much of the country, San Franciscans indulge in what is usually our most pleasant weather of the year in September. We enjoy barbecuing in the warm autumn days, and our mild climate lets us cook outdoors year-round. Gas grills are wonderful for the convenience they provide—just turn the dial after a long day at the office to start cooking!

The perfect solution for a patio or backyard, this Solé Gourmet gas grill provides great mobility with the included cart, while maintaining versatility and a superior cooking experience. Choose red or black, and we'll even throw in a cover to keep your grill in tip-top shape. (Grill: Skus 868002–03, **HOT DEAL \$399.99** Regular price \$799.99; Cover: Sku 869003)

Features:

- Three cast iron burners
- 30,000 total BTUs
- Jet flame ignition
- 400-square-inch cooking surface
- 160-square-inch enamel warming rack
- Enameled steel grill grates
- Stainless steel flame tamers
- Full width rear drip tray with handle
- Insultouch hood with glass window
- Deluxe European-style cart with chrome-plated storage rack
- Thermometer
- Tank storage
- Locking casters
- Twin side shelves
- Gloss powder-coated steel finish
- Convenient built-in bottle opener
- Self-cleaning inner hood liner
- Optional side burner



Free Cover
with purchase of grill
\$69.00 Value

Benjamin Moore Paints

...continued from page 1

unlimited color selection. An environmentally friendly alternative for your painting projects, this paint qualifies for LEED credit and is also Greenguard certified.

- Virtually odorless
- Zero VOCs
- 100% acrylic
- Provides a durable, washable finish
- Spatter resistant
- Unlimited color selection
- Lower total emissions
- One hour recoat for quick return to service
- Carries the Green Promise designation
- Self-priming on most surfaces
- Easy cleanup



Regal® Select

Regal Select offers the premium performance and smooth application you've come to expect from Benjamin Moore, with the added benefits of their cutting-edge new technologies. Thanks to proprietary waterborne resins and zero-VOC colorants, Regal Select is both a paint and primer in one advanced formula.

- Features paint and primer together
- Easy application
- Highly washable
- Low VOC, low odor
- Excellent hide
- Traditional flat finish for moderate traffic areas and ceilings
- Provides a mildew-resistant coating



ben®

A great value, with all the performance qualities you expect from a Benjamin Moore product, ben is a low-VOC/low-odor paint that applies easily, is very durable, and covers well.

- Excellent flat finish for ceilings and low traffic areas
- Great hide
- Exhibits great touch-up characteristics
- Spatter resistant
- Excellent application properties
- Available in all colors
- Low odor and low VOC, even after tinting
- Self-priming on most surfaces



Re-COLE-mend: Locksmith, Home Repair, Design + Build, and much more!

Repair Referral Service

COLE HARDWARE's Repair Referral Service was created to introduce our customers to the finest contractors and tradespeople we know. We have formed alliances with independent businesspeople in order to provide you with the very best in home repair, maintenance, and remodeling. Some jobs may even be performed by qualified members of our staff.

We provide referrals for:

Air Conditioning
Alarms/Security Systems/Access Control
Antique Restoration
Appliance Repair and Installation
Arborist
Architectural Planning
Asbestos Removal
Bath Resurface
Brick and Stone Masonry
Cabinetmaking
Carpentry
Carpet and Linoleum Installation
Carpet Cleaning
Chimney Sweep and Repair
Cleaning/Janitorial
Commercial Kitchen Installation

Computer Data Cabling
Computer Grounding
Computer Repair and Tutoring
Concrete
Custom Closets, Pantries, and Storage Solutions
Decks New/Stain
Design + Build
Disaster Cleanup and Restoration (Flood/Fire/Sewage)
Door Refinishing
Drain Cleaning
Drywall/Lath
Duct and Dryer Vent Cleaning
Electrical 24/7
Emergency Locksmith
Emergency Power Restoration

Faucet Repair and Installation
Fences
Furnace Repair and Installation
Furniture Refinishing and Repair
Furniture Upholstering
Garage Door Repair/Installation
Gardening/Pruning/Tree Trimming
General Contractors
Glass Installation
Grout Restoration
Handyman Services
Hardwood Floors New/Refinish
Home and Office Organizing
Home Energy Rating Systems (HERS)
Home Entertainment Systems

Insulation Installation
Intercom Systems
Interior Design, Staging, and Color Consultation
Interior Wood Refinishing and Restoration
Iron and Metal Works/Gates
Kitchen and Bath Remodeling
Landscaping
Lead Inspection and Abatement
Leak Diagnosis/Waterproofing
Lock Installation
Locksmith Service 24/7
Mold Remediation
Moving
New Construction
Painting Interior/Exterior

Pest and Termite Control
Plastering
Plumbing 24/7
Power Washing, Commercial and Residential Cleaning
Remodeling / Major Remodeling
Roofs New/Repair
Room Additions
Security Evaluation / Consultation
Seismic Upgrading
Sheet Metal Work
Shutter Installation

Skylights
Solar Energy Installation
Stained Glass Creation and Repair
Stair Lift Installation
Stucco Work
Telephone System Installation
Tile Installation
Wallpaper Application
Water Heater Installation
Welding
Window Cleaning/Repair
Windows and Doors



COLE HARDWARE is a licensed California General Contractor, license number 708403.

Contact us at www.colehardware.com/homerepair

Meet Ricardo, Professional Painter

How did the COLE HARDWARE get so lucky to meet Ricardo, one of the top-notch painters in our Repair Referral Service? Ricardo was introduced to us by

another of our fine tradespeople, and he's quickly become part of the family. A member of our Repair Referral Service for about six months now, Ricardo has been generating nothing but compliments on his professionalism, fine work, and fair pricing.

Ricardo has a unique background, coming to the United States from El Salvador. He has a long resume that precedes his paint contracting business, having been an airplane mechanic and earning his EMT certification. A member of two local unions, Ricardo has worked in some of the City's residential skyscrapers.

When considering all that's needed to repair and maintain a home, a new paint job is often the first "go to" project that is highly cost effective. Ricardo says, "When clients make a decision to paint the exterior or interior of their home, they should always choose a top-quality paint like Benjamin Moore," which is, of course, sold at all four of our COLE HARDWARE stores. According to Ricardo, a paint job will hold up

longer with a top-grade paint, thus adding to both the value and enjoyment of your home.

Ricardo takes great pride in seeing his clients' reactions to a completed paint job. He believes a new interior paint job can be a great mood elevator! If you aren't sure of a color, Ricardo will help you select the ideal shade. Ricardo never schedules more than two jobs at the same time. This allows him to personally oversee all projects, keep overhead low, and pass the savings on to you.

Ricardo has obtained EPA Lead Certification, so he is knowledgeable about the rules and regulations regarding lead paint. Most houses built before 1978 have been painted with lead paint. Ricardo employs a technique for sanding and disposing of lead dust that keeps you and your family safe during the painting process.

When Ricardo is not painting, he parents his two children and coaches professional soccer. If you would like to get a free estimate to paint your home or business, inside or out, contact Ricardo through our Repair Referral Service at 415/753-2653 ext. 3 or e-mail homerepair@colehardware.com.



Ricardo and his crew provide great paint results.



SUPPLIES

415/647-1800 E-mail: colesupply@colehardware.com

- Competitive pricing
- Incomparable service
- Specializing in hard-to-find items
- Free Bay Area delivery on most items

WHAT'S UNIQUE

We Love Wood!

Being a hardware store, we of course love the look of wood. Check out these new products you can find at our stores. We “wood” love to show them to you!

Invisiplug®

Invisiplug is the first power strip that blends in with the look your hardwood flooring. Available in four hardwood finishes—light natural, medium cherry, dark cherry, and dark oak—Invisiplug is constructed from plastic injected with wood grain printing and has a coordinating 3-foot cord. Give your floors a clean, uncluttered look with Invisiplug. Six outlets and surge protected, Invisiplug will work in any room of the house. (Skus 327002, 9, 11–12 \$16.99)



Wood-Grain Bottles

These tasteful bottles with a finish that mimics natural teakwood grain feature a double-walled stainless construction for use with both hot and cold liquids. For every wood-grain bottle sold, one tree will be planted by S'well partner American Forest, the country's oldest national conservation nonprofit dedicated to protecting and restoring our shared environment. Available in two sizes. (17-Ounce: Sku 871035, \$29.99; 25-Ounce: Sku 871036, \$39.99)



Polder® 3-Step Stool

Many homes in San Francisco feature high ceilings, so having a step stool around the house for simple tasks such as changing a light bulb is a necessity. Now available in a rich wood-grain finish, this three-step, ultralight ladder weighs only 7.5 pounds and is ANSI Type II rated for household use. The lightweight aluminum construction features an extra-high rail, nonskid feet, and extra-deep steps for safe use. A wood-grain finish gives this utility item a touch of elegance that complements any household décor. (Sku 132109, \$79.99)



Nonskid, deep steps for secure footing

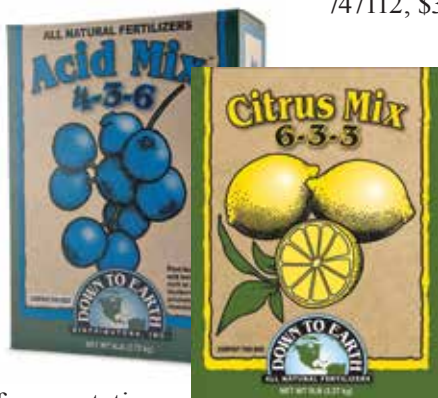
Safety latch that holds ladder securely in open position for use

Down to Earth Fertilizer Blends

For smaller gardens, COLE HARDWARE offers these all-natural fertilizer blends from Down to Earth, now available in 1-pound boxes.

Acid Mix™

Acid Mix is a fertilizer blended specially for acid-loving plants like rhododendrons, azaleas, hydrangeas, evergreen trees and shrubs, blueberries, raspberries, and other plants that thrive in a low-pH soil. To encourage lush flowers and fruit, apply Acid Mix in early spring for vegetative growth and again when blooms appear. Late fall applications promote healthy root growth and boost resistance to extreme winter temperatures. (Sku 747111, \$3.99)



ingredients and designed to deliver a steady supply of essential nutrients to your plants while enhancing soil fertility and microbial activity naturally. (Sku 747112, \$3.99)

Citrus Mix

Citrus Mix is designed to nourish citrus trees in home orchards and containers. It is formulated with primary and secondary plant nutrients plus selected micronutrients that promote lush new growth, abundant green foliage, fragrant blossoms, and bountiful fruit. It may also be used to feed other fruit trees, vines, and ornamentals for equally enjoyable results. (Sku 747113, \$3.99)

Rose & Flower Mix™

This is a special fertilizer blend that provides ample nitrogen for vigorous growth, extra phosphorous for beautiful blooms, and potassium and trace elements for healthy plant stock. Rose & Flower Mix supplies your favorite bulbs, annuals, and perennials with the nutrients needed for a long, healthy season of sensational flowering. An especially outstanding blend for roses, blooming bulbs, onions, and garlic, it's also a great all-around fertilizer for any other flowering or fruiting plants. (Sku 747114, \$3.99)



Voltage Tester
(Sku 3270337, \$9.99)

If you're not sure whether the wire is live, a working voltage tester could save your life.

—Gavin

Follow COLE HARDWARE!



**Shop 24/7 at
ColeHardware.com**



"Our commitment to you: Your satisfaction guaranteed. Period."

FROM THE GARDEN CENTER

Visit our garden centers at the Cole Street, Polk Street, and Mission Street stores.



In the Garden September Garden Tasks

Tips from Dennis and Bill



Stop by our Cole Street garden center for all your gardening needs. The advice is free from the Garden Guys, Dennis and Bill. E-mail them with any questions: dennis@colehardware.com or blitz@colehardware.com.

September in San Francisco is usually warm and beautiful—a great time to enjoy being outdoors in your garden, preparing it for the months to come. Permanent landscaping is an especially good project to dive into this month. Trees and shrubs do well when planted in our warm autumn soil so that they can take in the winter rains. And of course efficient use of water in the garden is especially important because we are facing drought conditions and approaching what are typically our hottest days.



✓ Unless it is very hot, this is a good time to plant your winter vegetable garden: brussels sprouts, leeks, cabbage, radishes, spinach, broccoli, and all types of greens. Wait until next month if the weather is too hot.

✓ Harvest fruit daily since fruit ripens more quickly this time of year.

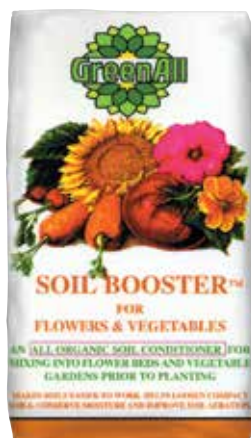
✓ If you started your tomatoes late and are worried about them ripening in time, consider pinching off any new flower clusters. This will direct all the plant's resources into ripening the fruit that is already formed. Also, withhold water to give them a more delicious taste. This stresses the plant, which may increase the chance of disease, but at this point the season is almost over, so that's okay.

✓ Check container plants often for proper soil moisture.

✓ Water more liberally during the hot weather, but efficiently. Citrus trees in particular need to be well watered, since citrus fruit is mostly water. Citrus trees will get their last feeding this month. We recommend Espoma® Citrus-tone® organic plant food. (Sku 7208671, \$9.99)

✓ During fall and winter months, reduce applications of fertilizers.

✓ Flowering plants and roses will benefit from Espoma Rose-tone® fertilizer. (Sku 7122880, \$9.99)



✓ Deadhead perennials and divide those that look crowded. Lift and loosen clumps and divide into sections, removing any dead parts. Amend the soil with compost and replant in any bare spots. Water well. GreenAll® Soil Booster™ is an all-natural and organic conditioner for mixing into flower beds and vegetable gardens before planting. (Sku 746003, \$7.99)

✓ Bougainvillea pruning can be done at this time to shape or direct growth. Long stems should be cut back to keep producing flowering wood if you are growing your plant on a wall.

✓ Collect mature seeds and keep them paper bags in a warm place to dry out. Once dry, store them in labeled envelopes in a cool, dry place.



✓ Shop now for spring bulbs and store them in a cool, dark place until planting, starting at the end of September through November. Remember that crocus, hyacinths, and tulips require six to eight weeks of “pre-cooling” to bloom well. Store these in labeled paper bags in the fridge, separated from all food.

✓ Think about planting native plants—they are heartier and do particularly well when planted in the fall so that they can benefit from winter rains.

See you in the garden!



Planting Fall Bulbs for Spring Bloom

Autumn is the time (October and November are best) to plant bulbs that bloom in spring and early summer—including daffodils, tulips, freesias, and hyacinths—and summer bloomers such as iris.

Selecting the Best Bulbs

Bulb is actually the common name for any of a group of plants that have underground storage organs. These storage organs accumulate reserves of nutrients that will ensure the survival of the plant during the dormant season and also supply energy for the growth and blossoming of the plant in the year to come. But whether your plant is a true bulb or a rhizome, corm, tuber, or tuberous root, there are

a few things to remember when selecting bulbs for planting in your garden.

Choose bulbs that are plump, firm, and heavy. Don't take any bulbs that feel soft or mushy or that are shriveled up. Larger bulbs will often yield more flowers, but they may be expensive. It could be more economical to choose midsize specimens instead; remember, these plants will grow over the next year or two and have plenty of time to increase in size and bloom as richly as the larger bulbs.

One thing to watch closely for when purchasing bulbs is the origin of the plant. Avoid buying wild bulbs—in many cases, bulbs have been so extensively dug in the wild that the plants are considered endangered species in their native habitats.

Any commercially grown plants will probably be labeled as a named variety or a hybrid; they should also be marked “commercially propagated” or “from cultivated stock.” If the bulbs are not labeled, make sure to ask about their origin before buying to avoid contributing to the loss of these plants in the wild. (All

bulbs sold at COLE HARDWARE's garden centers have been cultivated; none is wild dug.) Bulbs can be stored in your refrigerator for a few weeks until you are ready to plant them. Keep them in a paper bag away from food.



Bulbs Need Good Soil

Good soil is crucial to winter/wet season survival as well as bloom performance in subsequent years. Drainage and moisture retention are key—saturated soil will drown or rot bulbs over the winter months. If the drainage in your garden is very poor, you might consider planting on a slope or in raised flower beds.

Soils that don't absorb moisture may be nutrient-poor. Amendments such as compost, peat moss, and fine-textured mulch will provide the organic matter for a good bulb bed.

Fertilizers such as bone meal, superphosphate, or specialized bulb mixes are highly recommended to

continued on page 9...



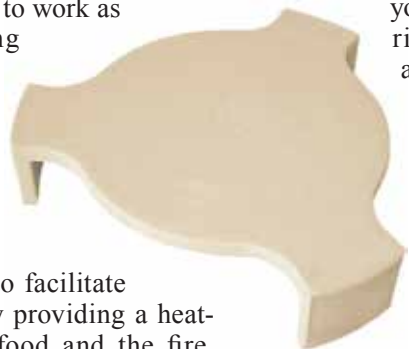
WHAT'S IN SEASON

The ConvEGGtor™: Indirect Convection Cooking on the Big Green Egg

The Big Green Egg is designed to work as a complete outdoor cooking system, producing unrivaled results whether grilling, roasting, smoking, or baking—and nothing contributes more to the versatility of your EGG than adding a convEGGtor to your eggcessories collection.

The convEGGtor is designed to facilitate indirect cooking on the EGG by providing a heat-directing barrier between the food and the fire, instantly transforming your EGG into an outdoor convection oven. The design of the convEGGtor, in conjunction with the thermal properties of the EGG, allows heat to efficiently radiate within the dome while preventing the flames and heat from overcooking the food.

In the mood for a perfect pizzeria-style pizza? There's no need to travel to Italy or buy a high-priced pizza oven—you can bake and roast your way to culinary perfection with indirect heat using the convEGGtor and the pizza/baking stones. How about low-and-slow barbecue? When using the convEGGtor for low-temp cooking with natural wood chips or chunks, the smoke-infused air circulates around



your briskets, roasts, whole chickens, or ribs—resulting in juicy, delicious, and aromatic meats and poultry. And, the convEGGtor is the secret recipe for amazing holiday turkey, ham, and roasts of any kind!

You may never cook indoors again once you experience how your Big Green Egg, paired with the convEGGtor for indirect convection cooking, achieves better results—with more intense flavor—than any other oven. It really is the ultimate cooking experience. (ConvEGGtor Small: Sku 869068, \$64.99; Medium: Sku 869069, \$89.99; Large: 869012, \$99.99; Pizza Stone, Medium: Sku 869070, \$49.99; Large: 869014, \$59.99; X-Large: Sku 869013, \$99.99)



Weber® Summit®: Stunning Stainless

For avid outdoor cooks, the Weber Summit series is the Cadillac of gas grills. Loaded with features, these grills take barbecuing to a professional level. Available at our Cole Street location and by special order at other COLE HARDWARE locations, purchasing a Weber Summit is an investment in many savory meals for years to come. The Summit's stainless exterior is a classic, and you'll find stainless accessories at our stores that will let you cook up a storm and keep your grill in tip-top shape!

Summit S-420
(Sku 8292963,
\$1,499.99)



Weber® Kettle Comparison

While gas grills are wonderful for the convenience they provide, many barbecue aficionados swear by charcoal grills for the distinct smoky flavor they deliver.

COLE HARDWARE offers these Weber kettle grills in assorted sizes for a big backyard or a

petite patio. To keep your grill in top shape in our foggy City, be sure to invest in a cover, too. Covers are available in assorted sizes. (\$9.99–\$45.99)

All Weber charcoal kettle grills feature a porcelain-enameled bowl and lid and heavy-duty cooking grates, along with the individual characteristics listed here.



Performer® Platinum Series Grill

- Hinged 22½-inch cooking grate
- One-Touch cleaning system
- Removable ash catcher
- Durable steel frame
- Built-in thermometer
- Gas ignition

Available by special order.
(Sku 8261943, \$349.99)



One-Touch® Gold Series Grill

- Hinged 22½-inch cooking grate
 - One-Touch cleaning system
 - Removable ash catcher
- (Black: Sku 8257891, \$149.99;
Green: Sku 8257909, \$159.99;
Blue: Sku 8257974, \$159.99)



One-Touch® Silver Series Grill

- 22½-inch cooking grate
 - One-Touch cleaning system
 - No-rust aluminum vent and ash catcher
- (Sku 8105207, \$99.99)



Smokey Joe® Gold Grill

- 14½-inch cooking grate
- Compact and portable
- Lid lock for carrying doubles as lid holder
- No-rust aluminum vent
- Glass-reinforced nylon handle

Available by special order. (Sku 87771, \$39.99)



Smokey Joe® Silver Grill

- 14½-inch cooking grate
- Big barbecue flavor in a small package
- No-rust aluminum vent
- Glass-reinforced nylon handle

(Sku 85415, \$31.99)



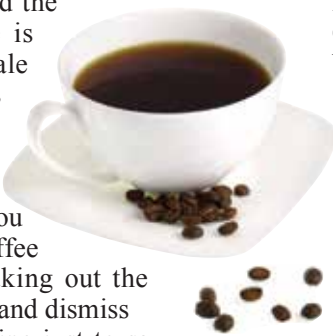
WHAT'S IN SEASON

Coffee at COLE HARDWARE

Across San Francisco and the rest of the nation, coffee is having a moment. Upscale and boutique coffee shops are on the rise, and it seems every day there is a latest and greatest method of brewing coffee. When you come across a boutique coffee shop with a long line snaking out the door, do you roll your eyes and dismiss the hype, eagerly hop in line just to say you tried the trendiest coffee of the moment, or head for home where you have your own carefully selected beans and favorite brewing method to make your ideal cup? Unless someone's already advanced to the PhD level of coffee knowledge, chances are most of us can learn something new about different brewing methods and have fun in the process. And while COLE HARDWARE is far from that cool new coffee shop around the corner using equipment that looks like it's out of a science lab to make your cup to order, our housewares sections do boast a solid representation of the growing number of coffee-making methods.

First, the Beans

It is generally agreed upon that a good cup of coffee must start with good beans. That being said, what constitutes "good beans" is of course entirely based on personal preference. Preground beans are readily available, and many of us prefer them for convenience or tradition. However, coffee aficionados (aficionados, snobs—whatever you prefer to call them!) pretty much unanimously agree that grinding your own beans gives you fresher flavor. Not only that, but depending on the quality of your grinder, you should be able to select the optimal grind for the brewing method you choose. Sampling and experimenting with beans of different origins, roasts, and blends is a fun way to pick your personal favorite flavor. At COLE HARDWARE, we love



Nomadic Ground coffee. (Skus 999006–7, \$12.99) Grind-to-water ratio is also a matter best determined by personal preference. A good place to start is 1 tablespoon of ground coffee per cup of water being used, but you may find that you prefer more or less. A common misconception about the caffeine level of coffee beans is that darker roasts will have more caffeine. This idea is probably due to the stronger taste of darker roasts, which many people prefer. However, a lighter roast will usually yield a more caffeinated cup.

Automatic Coffee Maker

Tried and true, most folks are familiar with this method. Medium-ground beans are placed in a paper or reusable gold filter, and the amount of water equal to the amount of coffee you want is measured out. With the push of a button, the water is heated and runs through the machine, through the beans and the filter, and into the carafe. The end result is a conveniently prepared pot of coffee, kept warm on the machine's heating plate until it's turned off. (Cuisinart® 12-Cup Coffee Maker: Sku 6221741, \$99.99)

French Press

Your preferred amount of ground coffee is placed in the bottom of your French press receptacle and boiling water is poured over the top. The coffee grounds are brewed for as long as they are allowed to comele with the freshly boiled water. The amount of time you allow your beans to sit is also a matter of personal preference, but 4 to 7 minutes is a good place to start. When the time is up, the plunging filter mechanism attached to the lid should be slowly pushed down until it reaches the bottom of the French press, using equally applied pressure



Chemex®

This brewing method wins the award for style—literally. It has been recognized as an outstanding example of American design and is housed in the permanent collections of many museums, including the Museum of Modern Art in New York City! Chemex uses the pour-over method. They produce their own brand of filters, which are much heavier than standard coffee filters, therefore allowing less sediment to seep through and end up in your cup.



After placing your filter in the top of the Chemex, it is recommended that you prerinse it with hot water to seal the filter and rinse out any paper flavor from the filter. After discarding the rinse water, place your medium to coarsely ground coffee in the filter. Slowly pour just enough water over your beans to moisten them. If your coffee is fresh, as it should be, you will see a bubbling foam appear, which is called the "bloom." You can give the coffee a light stir to make sure all the grounds are saturated; then pour slowly and evenly in a spiral motion over the grounds to ensure they are getting evenly extracted. Pour until water reaches the top of the brewer and add more water as it filters through, until the coffee in the carafe reaches the glass button marking on the side. Discard your filter, pour into a mug, and drink up! (Chemex: Sku 64548, \$44.99; Chemex Filters: Sku 63888, \$8.99)

Single-Cup Cone

For those who need only one cup to get them going and prefer a low-acidity brew, a single-cup cone is a great option. Follow the same step-by-step instructions as for the Chemex above. In this case, you need to be watching carefully as your water filters through the cone, because once your cup is full, water will start overflowing. Quickly move the filter cone to the sink or to a second cup you have ready for this purpose. We offer single-cup cones in both porcelain and plastic in assorted sizes. (Skus 627042–3, 627621, 653908, 6084040, \$2.99–\$14.99)



COLE HARDWARE Coffee Mug

Enjoy your coffee in our new COLE HARDWARE mug. The generous 14-ounce size is perfect for coffee lovers to get their morning caffeine jolt. (Sku 625022, \$4.99)



COLE HARDWARE Rewards

Rewards member benefits:

- Membership is free, and you'll receive the *Hardware Hotline*, our monthly newsletter full of valuable information and promotions.
- Free delivery in San Francisco with \$100 purchase.
- New members receive an instant 5% discount on their first purchase for joining and a \$5 coupon toward their subsequent purchase of \$25.
- Attach your Rewards key fob to your key ring—if you lose your keys, they can be dropped in the mail to be returned to us; we'll notify you if we receive them.
- Lifetime warranty on most products purchased at COLE HARDWARE.
- Receive a birthday discount equal to 50% of your age, up to a \$100 discount.
- We don't sell our customer list, and all information is kept confidential.

How points are earned:

- For every \$1 spent, one point is earned.
 - Points are converted in increments of 100 points, which converts to \$5, and posted to your Rewards card monthly. This equates to 5% of your total purchases.
 - Points are calculated daily and shown on receipts.
 - For us to track your Rewards points, please identify yourself as a Rewards member each time you shop.
- Terms and Conditions: 1. Rewards dollars are cleared after nine months. 2. Points accumulate for one year, with leftover points clearing at the end of the year. 3. Rewards points are not issued for charge accounts or any accounts that receive a discounted selling price under any other program.

For more information, visit www.colehardware.com/rewards or e-mail service@colehardware.com.



ENVIRONMENTAL INFO

COLE HARDWARE
GREEN CERTIFIED

GOOD FOR THE EARTH—WE TAKE ACTION FOR THE ENVIRONMENT!

Save Water! State's Emergency Drought Regulations

In response to the ongoing severe drought, on August 1, 2014, the State Water Resources Control Board passed emergency regulations to ensure all Californians reduce outdoor water waste or face potential enforcement. The San Francisco Public Utilities Commission is continuing its ongoing and comprehensive water conservation programs and educational efforts to ensure that citations are issued only as a last resort. The regulations apply statewide and are being implemented throughout San Francisco.

What are the State's emergency drought regulations?

Californians can be cited for:

- Washing down driveways and sidewalks, except when needed for health and safety purposes.
- Watering outdoor landscapes in a manner that causes excess runoff.
- Using a hose without a shut-off nozzle to wash motor vehicles.
- Using drinking water in fountains or decorative water features, unless the water recirculates.

The State's requirements are similar to water waste restrictions the SFPUC already has in place

and are consistent with water-saving tips and guidance the SFPUC provides rain or shine.

Will the SFPUC be issuing \$500 fines for water waste?

The SFPUC already has the authority to enforce the City's water-efficient irrigation ordinance, including the authority to issue citations. Their focus will be first on informing and educating the public about efficient water use. They will issue citations and fines only as a last resort and only to those who have been warned multiple times.

Who could receive warnings about water waste, and how will they be issued?

Any residents the SFPUC believes may be engaging in a prohibited outdoor wasteful water practice could receive a warning via a notice handed directly to them by a SFPUC representative, a letter from the SFPUC mailed to their attention, or a door hanger or notice posted by the SFPUC at their property.

For more information, visit sfwater.org.



Recycle at COLE HARDWARE!

Bring to any of our four stores:

NEW! BRITA PRODUCTS:

Includes filters, pitchers, bottles, and dispensers.



NEW! SMALL CONSUMER ELECTRONICS:

Items up to the size of a desktop computer.



CELL PHONES:

Personal cell phones—batteries and chargers not required.

BATTERIES:

Rechargeable (NiCad, NiMH) and household (alkaline and carbon).



OLD PAINT:

- Recycle dry, clean, empty metal paint cans through your regular trash pickup. The paint containers you bring to us should have paint in them!
- No handwritten labels can be accepted.
- Be sure that lids are SEALED ON TIGHT and containers are rust-free and don't leak.
- Please limit your drop-offs to no more than five 1-gallon-size containers (or 20 quart-size containers or a combination of both) at a time. Containers are counted by size, not by the volume of paint they contain.
- Take paint to the customer service desk.
- PLEASE, no brushes or rags!



PROPANE TANKS:

Small (14 or 16.9 oz.), empty, nonrefillable propane cylinders only. Household only. Limit 5 per visit.



SCRAP METAL:

Copper and brass.

SPENT FLUORESCENT BULBS:

CFLs, tubes up to 8 feet, U- and D-shaped tubes. Drop-off limit is 10 bulbs.



EXPIRED PRINTER CARTRIDGES:

Must be in plastic bags to avoid leakage.

SOFT PLASTIC:

Clean plastic only. Households only. One basketball-size amount per visit, please.



For Bay Area recycling resources, visit www.colehardware.com/recycle.htm

COLE HARDWARE Reusable Bags

The average American uses 500 single-use, disposable bags every year—that's over 100 billion bags! Although San Francisco has banned these bags, they can still be found in use around the City. Many plastic bags end up in landfills or floating in our waters.

Our COLE HARDWARE ChicoBags are ideal companions on your shopping trips. Whether you're headed to the grocery store, farmer's market, or mall, we have a bag for you! Our reusable bags compact down into an attached pouch when not in use, for convenient storage in a purse, pocket, or backpack, so single-use bags never sneak up on you again. Made of machine-washable, durable polyester and complete with a 25-pound carrying capacity and

two convenient handles, this bag is the ideal reusable bag.

While we may be more bag savvy here in San Francisco,



many other parts of the country are lagging behind. Send your friends and relatives across the country one of our bags, so they can help make a dent in that 100 billion bags! (Sku 906015, \$6.99)



COUPON

FREE
CHICOBAG WITH ANY
\$25 PURCHASE



1489CHINO

Limit one per customer.
Offer valid until
September 30, 2014.



HARDWARE KNOWLEDGE

Remove Stubborn Hair Clogs without Harsh Chemicals

Although many clogs start around the pop-up stopper in a drain, some heavy-duty hair clogs make their way deeper into your plumbing system and may foil chemical drain cleaners. If you're determined enough and can tolerate a bit of a mess, here are some simple, nonchemical plumber's helpers you can use to unclog your drains. It may take a few tries with one or more of these tools, but you can save significantly by doing this project yourself. All of these tools offer an earth-friendly approach to remedying a nasty hair clog.



The simple plastic 20-inch **Cobra™ Zip-It®** can be dipped down the drain to fish out shallow hair clogs and prevent deeper clogs from reaching the trap. Sharp barbs run the length of the strip to snag on and pull hair clogs out of the drain. (Sku 4192472, \$3.99)

A **hair-catching brush** is thin and flexible enough to bypass sink stoppers. It goes in and brings up hair from basins and tubs. (Sku 499100, \$3.49)

A trusty plunger is essential for every home. To create a good seal on fixtures with sloping surfaces, you may want to upgrade to a model with a modified rubber cup, like the **Korky® rubber plunger**. (Sku 4217073, \$8.99) And since plungers don't come with directions, remember these tips:

- The plunger needs to form a tight seal to drive air pressure against the clog. Immerse the plunger lip in a bit of water before you plunge to ensure



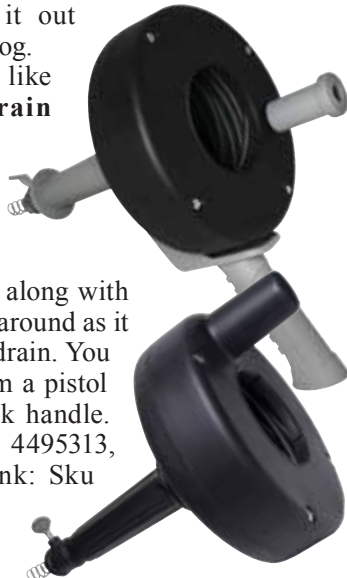
a tighter seal. And don't forget to stop up the opening in the overflow fixture with a wet cloth.

- If you've tried chemical drain cleaners with no success, the caustic fluids may have collected above the clog and could splash out the drain during plunging. Use goggles and gloves!

Deeper clogs will require a cable auger, such as the **Cobra 25-foot round-wire clean-out tool** (Sku 40943,

\$14.99), which has a long, flexible steel cable fitted with a hand crank. Feed the auger in through the overflow plate. The cable will meet resistance at pipe bends or at the clog itself. If the obstruction is a bend in the pipe, turning the crank or pumping the cable by hand will force it past the curve. If the cable tip has met the clog, there will be resistance pulling the cable back out. Crank the cable tight to drill the tip into the hair clog and then pull it out along with the clog.

A drum auger, like the **Cobra drain auger**, will help control the tension from the twisted cable, which can cause the tip, along with the clog, to fling around as it backs out of the drain. You can choose from a pistol grip or a crank handle. (Pistol: Sku 4495313, \$21.99; Crank: Sku 4495305, \$18.99)



Of course, the best tool is a good **drain screen** to prevent clogs in the first place. We offer several screen strainers for showers and bathtubs in assorted sizes and prices. (Sku 4202701, \$5.99)



Ray Mullin, son of Rewards member Melissa Mullin, in Kings Canyon National Park

COLE HARDWARE T-Shirts on the Go!

Our T-shirts travel the globe while we're here serving City residents and visitors. Send us a photo of yourself or a loved one wearing a COLE HARDWARE T-shirt, in Kings Canyon or the Grand Canyon, and we'll send you a \$5 gift card. Available in assorted styles and sizes for men, women, and children. (\$9.99)

Planting Fall Bulbs for Spring Bloom

...continued from page 5

add slow-release phosphorus for fantastic flowers next year. Mix into the entire bed or mix a small amount into the bottom of each bulb's planting hole.

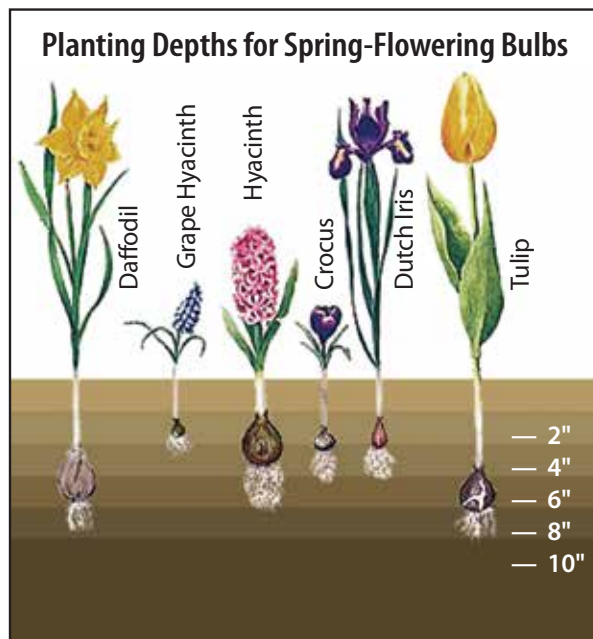
Planting Bulbs

Most bulbs prefer full sun. Some, such as iris, crocus, and freesia, will appreciate some shade once they are finished blooming. Bulbs may be planted among other plants or in a bed all to themselves. Each bulb should have its own individual hole dug for it.

Work a complete fertilizer into the soil, or if you are planting around already-established plants, you can dig up to a teaspoon (depending on the fertilizer) of fertilizer into the bottom of each hole; then add an inch or two of compost or soil before planting the bulb. Each variety of spring-flowering bulb has its preferred depth (see chart), but a general rule is to plant bulbs at a depth equal to twice the bulb's height. Make sure that the roots (the tiny hairs) are facing down. In a hot area or in sandy soils, you can plant slightly deeper; in heavy soil, plant more shallow.

Naturalization is another option for bulb planting; many bulbs can be planted in meadows or light

woodland areas to form a carpet of wildflower-like blooms every year. Be careful, though—if they aren't likely to receive enough water naturally, you



may have to supply it through irrigation. The traditional naturalizing method is to broadcast the bulbs over the area and then plant where they fall. The drift should be denser at one end or toward the center, as if they had begun to grow in one spot then gradually spread—this will result in the most realistic effect. Over the years, overcrowding may cause a decrease in the number of blooms; when this happens, it's time to dig up the bulbs, divide them, and replant.

Caring for Your Bulbs

Caring for your bulbs once they have sprouted is quite simple. If you like, you can apply a light fertilizer just before bloom time; this can be done with either a water-soluble fertilizer or with a granulated fertilizer or compost worked into the surface of the soil.

Let the plant continue to grow until it completely dies off and turns brown. This enables it to come back the following year. It's tempting to remove all the yellowing foliage when the plant has finished blooming, but the longer the leaves remain on the plant, the more nutrients the plant will be able to store in its bulb for the upcoming dormant season.



COMMUNITY News

Spare Change Collection Program

Our July spare change collection netted \$302.50 for Josie's Place, which provides facilitated peer support groups to children and teens in the San Francisco Bay Area who are grieving the death of a parent, sibling, close relative, or friend. This now brings the grand total since our program began to \$20,991.18!



Our August collection was earmarked for UCSF Benioff Children's Hospital in Oakland. We'll report those numbers to you next month.

Since Veronica in our COLE HARDWARE SUPPLIES

division has become active with SCRAP (Scroungers' Center for Reusable Art Parts), we decided it would be the beneficiary of our September collection.



SCRAP's mission is to stimulate creativity and environmental awareness in children and adults through promoting the creative reuse of materials that traditionally have been discarded as waste. See the full article on this page, and don't forget to drop your change in the collection jars at all of our stores!



Eunice and Siphai accept a check on behalf of the St. Anthony Foundation.



Rebecca Brandeburg shared this photo of her daughter Claire with puppy McCovey, who happily joined their family at our Cole Street dog adoption event in July.

Historic Home Trade Show

...continued from page 1

to experience. Returning this year are James Dixon, architect and keynote speaker, and Josh Mogal, the first recipient of a Platinum LEED Certification on a historic home. There will be insightful seminars from James, Josh, and other industry experts, as well as demonstrations from participating artisans and tradespeople. There will also be a special emphasis throughout the event on the environmental sustainability of historic homes. The trade show will highlight the pivotal role of established housing stock in creating ecologically sound homes that preserve period details.

The Historic Home Trade Show is brought to you by the Historic Home Owners Association, a nonprofit organization that serves as a networking avenue for individuals keen on preserving San Francisco's rich architectural heritage. Encompassing all homes built before 1926, the association strives to educate the public on the upkeep, renovation, and restoration of historic properties. Headlining the event are Artistic License and Heritage Salvage, both exemplars of this philosophy.

Artistic License is a group of skilled professional artisans dedicated to historic architectural restoration and newly interpreted period design. Working in the tradition of historic artisan guilds, Artistic License members provide a wide range of services and products from architectural design and building restoration to period furnishings and fine finishes. In a similar vein, Heritage Salvage is a hub of creativity and know-how, applying the three "R"s of Reduce, Reuse, and Recycle, while adding a fourth, Reclaim. With salvage expert Michael "Bug" Deakin at the helm, countless historic properties, both residential and commercial, have benefited from Heritage Salvage's commitment to sustainability.

You can get more information about this year's show at www.historichometradeshow.com.



Top 5 Most Wanted from Businesses

1. Foamcore from conferences and meetings
2. Paper and office supplies (staplers, hole punchers, scissors, pens, markers, white boards, etc.)
3. Fabric (must be larger than 12" x 12", no grommets or adhesives), especially silk, leather, fleece, felt, and lace
4. Mannequins
5. Manufacturing offcuts or mistakes*

*Please contact the outreach coordinator before donating: outreach@scrap-sf.org or 415/531-1421. The public can donate from 10:00 am to 4:00 pm Monday through Saturday at 801 Toland Street (entrance on Newcomb Avenue) in San Francisco. For more info, visit www.scrap-sf.org. SCRAP is COLE HARDWARE Community Partner #21477. Mentioning SCRAP (or your favorite Community Partner) at the time of checkout will post 10% of your purchase to that organization in the form of a COLE HARDWARE gift card for the upcoming year.



SCRAP is the Bay Area's oldest creative reuse center. Founded in 1976, this nonprofit helps collect reusable materials from the community and provides teachers with precious and affordable art supplies. Located in Bayview, SCRAP gets donations from both businesses and individuals of things that teachers and artists can use. Below is their top 10 list:

Top 5 Most Wanted from Residents

1. Art supplies (markers, paints, crayons, brushes, etc.)
2. Paper and office supplies (staplers, hole punchers, scissors, pens, etc.)
3. Yarn
4. Silk, leather, fleece, felt, lace, and sewing notions
5. Beads, buttons, jewelry, and jewelry-making supplies

COMMUNITY CONNECTIONS

BAY AREA BUSINESSES

Accounting/Bookkeeping: We are an accounting firm specializing in accounting systems for small and medium sized businesses with a focus on QuickBooks and online solutions. Services include setup, training, troubleshooting, cleanup, and ongoing bookkeeping for businesses that want to outsource the accounting. Deborah Lardie is a CPA and Certified QuickBooks Consultant. 415/864-0770, www.lardiecompany.com, deborah@lardiecompany.com

Attorney: Practicing 25 years in San Francisco and offering personalized, attentive service, reasonable fees. Advice and representation in residential and commercial tenancy matters—leases, notices, eviction, Rent Board petitions and hearings; drafting/enforcing contracts; formations of business entities—partnerships, limited liability companies, corporations. Free consultation. John R. Weinstein, Attorney-at-Law. Telephone 415/863-5896, e-mail john@johnweinsteinlaw.com

Bed and Breakfast Hosting: If you have an extra bedroom, with or without a private bath, that you would like to rent out on a nightly basis, let us know. Additional income—meet guests from all over the world. Phone: 415/899-0060, e-mail: reservations@bbsf.com, website: www.bbsf.com. Bed & Breakfast San Francisco—since 1977.

Driver: Retired gentleman can drive you (in my car) to medical appointments, grocery shopping or on other local errands. I am dependable, very punctual, friendly with a good sense of humor plus a fantastic reference list! I do what taxi drivers don't: wait for you in doctor's waiting room, help you shop (if needed), carry groceries/packages etc. All this for only \$25 an hour (2-hr. minimum). Please call Bill 415/826-3613 or e-mail bill311@att.net. Thanks for reading my ad!

Framing: Custom frames and mats. Personalized design consultation. Have your art framed by a local trusted artist. 30+ years in the design business and competitive pricing. Kingmond Young, 416 Cortland Avenue, 415/206-1680.

Interior Redesign and Feng Shui: Imagine living in a home that you love—a space that supports, nourishes, and inspires you. SpaceTransform creatively reenvisions and rearranges your rooms to be beautiful, functional, and comfortable. To learn more, contact Gwen at 415/656-7289 or visit www.spacetransform.com.

Legal Services: Established San Francisco attorney emphasizing Wills and Trusts (including LIVING TRUSTS and irrevocable trusts) and representation of small businesses (formation of corporations and limited liability companies; drafting of confidentiality and trade secret agreements, buy-sell agreements; and copyright matters). Reasonable rates (set fees for trusts). Call 415/221-3000 for appointment. See www.franklawoffice.com for info.

Orange Dog Manor: Cole Valley Vacation Rental is perfect for housing visiting grandparents or out-of-town friends. Fully furnished studio apartment includes kitchen and private bath. Special discount for weeklong rentals. Visit our website at www.orangedogmanor.com or call 415/753-6886.

Proofreading: Lurilla has an English degree, a journalism background and was a member of the International Typographical Union for 40 years. She is an excellent proofreader (editing service also). Reasonable rates—unreasonable pickiness! First page free, then hourly rates apply. References available. Call 415/648-1868.

Real Estate: Your Bay Area Real Estate Agent, Serving San Francisco and the Peninsula: Shari Klein, JD. Commercial and residential specialist; legally trained; experienced; seasoned negotiator; strong values and professional integrity; committed and responsive. "This is about you—the way to get started is to quit talking and begin doing." (Walt Disney) Cell number 650/464-5074. E-mail: sharicklein@gmail.com. DRE# 01941623.

Real Estate: \$2,100 REBATE WHEN BUYING OR SELLING YOUR HOME, CONDO, OR INCOME PROPERTY. Representing all neighborhoods of San Francisco and the Peninsula since 1990. I provide a complete service package for both buyers and sellers through Century 21. Why not compare your Realtor services with mine? Call Mike at 415/742-1199 or e-mail Mike.Torres@Century21.com. License #01071794. Rebate given at close of escrow.

Tax Prep and Planning: Tax services for individuals and self-employed persons. Over 20 years experience, especially in dealing with issues of artists, consultants, and nonfilers. Free initial phone consultation. Please contact Alan Steger, Enrolled Agent, at 415/387-3057 or visit www.StegerTax.com.

Wallpaper Installation: Over 30 years experience with all types of wall coverings: anaglypta, inlaid wood veneer, glass beads, metallic, natural fiber, hand-printed, murals, and nonwovens. The latest techniques in full-service, quality preparation, removal, repairs, and installation. For projects large or small, contact Susan through COLE HARDWARE's Repair Referral Service at 415/753-2653 ext. 3 or homerepair@colehardware.com.



Digital Hardware Hotline

To sign up for a digital version of our monthly *Hardware Hotline*, visit www.colehardware.com/eline.htm.

Getting Married?

COLE HARDWARE offers a Gift Registry!

For information, e-mail to service@colehardware.com.



Tool Rental Reservations

Visit www.bescrappy.com/register.

COLE HARDWARE proud member of:



CVIA
COLE VALLEY IMPROVEMENT ASSOCIATION



YerhaBuena
ALLIANCE



Polk Street Merchants District



Russian Hill Neighbors



HANC
Haight
Ashbury
Neighborhood
Council

som**ba** South of Market Business Association

COLE HARDWARE supports organizations working to enhance our great City. If you'd like us to be part of your membership, please contact julia@colehardware.com.

Introducing




Your space matters. Now with ben & Me you can get everything you need to do it yourself. Without that DIY look.

ben & Me...


- & 2 gallons of grownup-grade paint.
- & a quart of semigloss to round out the edges.
- & a roller, paintbrush and tape. Gotta have the basics.
- & a drop cloth. Because drips happen to the best of us. Even with splatter-free paint.
- & a How-To Guide and playlist to keep you on a roll.
- & a few more tools to create that "I-can't-believe-I-did-it-myself" space.

And if we left anything out, #helpmeben. All this for just \$89. That's \$139-worth of stuff.

ben & Me: You got this. It's in the bag.



The COLE HARDWARE Calendar - September

SUNDAY	MONDAY	TUESDAY	WEDNESDAY	THURSDAY	FRIDAY	SATURDAY
	1  Labor Day	2	3	4	5 Flash Friday DEALS	6  Chinatown Autumn Moon Festival Sept. 6 and 7
7 Opera in the Park Golden Gate Park  Home Opener Sept. 14	8	9	10 Hardware Happy Hour 5:00 pm-8:00 pm see page 2 for details 	11	12 Flash Friday DEALS	13 Big Green Egg Demo 10:00 am-2:00 pm Cole St. store 
14  SUNDAY STREETS San Francisco Western Addition	15 Victorian Home Trade Show Sept. 14 see page 1 for details 	16	17	18	19 Flash Friday DEALS	20
21	22  COMMUNITY SAVINGS DAYS Special Community Members SAVE 20% see our website for more details	23	24 COMMUNITY SAVINGS DAYS Senior Wednesday	25 COMMUNITY SAVINGS DAYS Military Thursday	26 Flash Friday DEALS	27 Polk St. Blues Festival Sept. 27 and 28 
28 12th Annual Cole Valley Fair  SUNDAY STREETS San Francisco Excelsior	29 COMMUNITY SAVINGS DAYS Student Monday	30 COMMUNITY SAVINGS DAYS Teacher Tuesday	Flash Friday DEALS To sign up, send an e-mail to hotline@colehardware.com with "Flash" in the subject line.			



Our founder, Dave Karp
Purveyor of Hardware Wisdom

The COLE HARDWARE credo...

Commitment to savings:
Rewards program members receive a 5% monthly dividend on purchases.

Commitment to the community:
We donate 10% of what you spend to local charities (you get to designate one of our Community Partner beneficiaries).

Commitment to you: Over 90 years of guaranteed customer satisfaction.

Commitment to the environment:
We're reducing our footprint by implementing environmentally sound practices in our stores.

Four locations serving you every single day of the year!

2254 Polk Street
San Francisco, CA 94109-1820
(at Green Street on Russian Hill)
415/674-8913 Fax: 674-8917
Every day 8:00 am-8:00 pm

3312 Mission Street
San Francisco, CA 94110-5009
(at 29th Street—near Safeway)
415/647-8700 Fax: 647-6554
Every day 8:00 am-8:00 pm

956 Cole Street
San Francisco, CA 94117-4316
(at Parnassus—near U.C. Medical Center)
415/753-2653 Fax: 753-0957
Every day 8:00 am-8:00 pm

70 4th Street
San Francisco, CA 94103-3124
(downtown bet. Market and Mission)
415/777-4400 Fax: 777-4453
Every day 8:00 am-8:00 pm

COLE HARDWARE reserves the right to limit quantities to stock on hand and to correct printed errors. Items are similar if not identical to printed illustrations. If an item is out of stock, we can offer a suitable replacement or a "rain check" for the advertised item. We strive for complete customer satisfaction.

Contact the *Hardware Hotline* at **415/753-2653 ext. 5** or e-mail hotline@colehardware.com.







www.colehardware.com
Contractor's License #708403
service@colehardware.com