

Bag of the Month

Tahoe Blue

FREE with \$25 purchase
(while supplies last)



\$5
INSTANT
GIFT CARD

see page 11 for details

E-Waste and Donation Drop-Off



Saturday, January 29
Mission St. Store
10:00 am–2:00 pm
see page 14 for details

COLE HARDWARE®'S

Hardware Hotline

January 2011

NEWS AND VIEWS FROM AROUND THE STORES



Gift Registry
Now at **COLE HARDWARE!**


Benjamin Moore
Paints

 **SAN FRANCISCO**
GREEN
BUSINESS

City Pride . . . and COLE HARDWARE Pride, Too!

The year 2011. I started this gig when I was 12. Later this year, I hit 60. Geez, who would have ever guessed?

Shortly after my marriage in 1975, I was faced with a life-changing decision: to enlist in the hardware business as a career or to continue in my quest to do something else. I lost sleep

continued on page 2...



Polk Street's Tina prepares to ring in the new year!

Good-Bye, Frequent Shoppers Club: Hello, COLE HARDWARE Rewards!

It's more than a name change. We're ratcheting up the benefits, modernizing the process, and giving you access to your 5% rebate on your purchases throughout the year. And best of all for our largest recipients, your rebates won't expire. You can roll them over from year to year!

Your 2010 Frequent Shoppers rebate will be applied to your new COLE HARDWARE Rewards card. You'll be given your COLE HARDWARE Rewards card during your first visit to our stores in 2011.

You will receive a new Rewards card and new key fob for your key chain. You will still enjoy the same great benefits that our previous Frequent Shoppers program offered: 5% rebate of purchases, free weekend City-wide delivery, your birthday discount and more. The new Rewards program will now allow us to automatically apply 5% of your purchases to your Rewards card every three months. You



no longer need to wait until the following year to enjoy your rebate! (For example, on April 1, 5% of your purchases made between January and March will automatically be loaded onto your Rewards card. If you spent \$100 in those months, \$5 will be posted to your Rewards card.)

Our Rewards program is free. The key fob attaches to your key chain, so our cashiers can easily swipe it for your purchases to apply to your Rewards account. If you happen to lose your keys and someone finds them and pops them into a mailbox, they will come back to us, so we can notify you. The Rewards card is just like cash and cannot be replaced, so you'll want to be sure to hang on to it.

In order to notify you when you have money transferred to your Rewards card, we

continued on page 2...

"Our commitment to you: Your satisfaction guaranteed. Period."

3312 Mission Street
San Francisco, CA 94110-5009

PRSRT STD
U.S. POSTAGE PAID
SAN FRANCISCO, CA
PERMIT #3137

**TIME SENSITIVE
MATERIAL**



City Pride . . . and COLE HARDWARE Pride, Too!

...continued from page 1

for a few nights mulling over my future. Finally, telling my new wife I would give it five years, I dropped out of a master's program at S.F. State and jumped headfirst into my new, yet familiar career. There were surely numerous reasons to choose hardware. The ultimate deciding factor, though, was my love for San Francisco. I didn't want to risk relocating. My roots were firmly planted in the Haight. I enjoyed the people, the community, the multitude of cultures and walks of life—the Haight-Ashbury, indeed our entire City, was teeming with life. By continuing to peddle pots and pans, and nuts and bolts, I was hopeful I'd remain a valued piece of the action. And in so doing, perhaps COLE HARDWARE could become a valued piece of the menagerie inside the bubble in which we reside.

As we approach the end of 2010, I'm thinking about City pride. Years later, I'm still overflowing with it.

- Earlier this month, I listened to Willie Brown pontificate to an audience of thousands, all laughing and soaking up his wisdom. I felt proud of San Francisco, knowing that our city is surely the only place on the planet that could incubate such a unique personality and politician.
- We had an "only in San Francisco" style election, ushering in new faces into City Hall. Of those, I had the pleasure of interviewing and conversing with two as supervisory candidates: Jane Kim and Malia Cohen. They are young, engaging, vibrant, whip-smart, and they will add fresh perspective to the ongoing conversation in City Hall. I know I will be proud to have their voices heard as they contribute to the dialogue that moves the City forward.
- And some future leaders: In November, I was honored to appear before a room of San Franciscans who are the class of 2010–11 of Leadership San Francisco (www.leadershipsfsf.org). These folks spend 10 full workdays

throughout the year studying all facets of life in the City, as they prepare themselves for future leadership opportunities. They are surely filled with City pride, as was I, fielding their questions on the trials and joys of doing business in our City.

- And of course, my COLE HARDWARE pride . . .

Yes, years later I'm still peddling those pots, pans, nuts and bolts. And that's pretty cool. But it's the people working at COLE HARDWARE that fill me with pride. We are a band of eclectic individuals working as a team (most of the time!) to provide the best shopping experience possible by delivering our own unique customer service to you, and to one another as well. Most who have made their careers at COLE HARDWARE would never have dreamed they'd be working here. For them, like me, it's not the pots and pans or the nuts and bolts: it's the culture of service we have collectively created, along with the lasting friendships, too. We all get a kick out of going the extra mile in all we do. In fact, I often tell new hires, "You don't have to be crazy to work at COLE HARDWARE. But it helps!" We live that craziness every day as we try to make everything happen "yesterday" as we work to please you today. It's fun, and for the most part appreciated, as we have weaved ourselves into the fabric of our City. That makes all of us proud!

The year 2011 will bring many new innovations, new products, some new people on both sides of the counter and new ways to serve you even better (I am most excited about the transformation of our Frequent Shoppers Club into COLE HARDWARE Rewards!). In fact, as we continue our pursuit of excellence, I can promise you only two things will remain constant: change, and "Our commitment to you: Your satisfaction guaranteed. Period."

Happy New Year.

—Rick

Good-Bye, Frequent Shoppers Club: Hello, COLE HARDWARE Rewards!

...continued from page 1

will need a current e-mail address tied to your account. Please be sure to give us your current e-mail address. We will, of course, never share your e-mail address with anyone. See the box below for more specific details on COLE HARDWARE Rewards. If you have any questions about COLE HARDWARE Rewards, please don't hesitate to e-mail us at rewards@colehardware.com.

COLE HARDWARE Rewards



How points are earned:

- ⇒ For every \$1 spent, one point is earned.
- ⇒ Points are converted to dollar value in increments of 100 points converting to \$5 posted to your Rewards card quarterly. Leftover points remain in place.
- ⇒ Points are calculated daily and shown on receipts.
- ⇒ Dividends for 5% of purchases made in 2010 will be transferred to your new Rewards gift card when you come in to redeem after February 1, 2011.
- ⇒ For us to track your Rewards points, please identify yourself as a Rewards member each time you shop.

Rewards Member Benefits:

- ⇒ Membership is free, and you'll receive the *Hardware Hotline*, our monthly newsletter full of valuable information and promotions.
- ⇒ Free delivery in San Francisco.
- ⇒ New members receive an instant 5% discount on their first purchase for joining and a \$5 coupon toward their subsequent purchase of \$25.
- ⇒ Attach your Rewards key fob to your key ring—if you lose your keys, they'll come to us in the mail, and we will notify you.
- ⇒ Lifetime warranty on most products purchased at COLE HARDWARE.
- ⇒ Receive a birthday discount equal to 50% of your age, up to a \$100 discount.
- ⇒ We don't sell our customer list and all information is kept confidential.

For more information, visit
www.colehardware.com/rewards
or e-mail service@colehardware.com.

**Great value.
Great performance.**

Share your sense of style with ben®. It's our low VOC, low odor coating that is available in any color you can imagine.

Benjamin Moore

benjaminmoore.com

Authentic Color | Benjamin Moore Paints and Coatings

© 2010 Benjamin Moore & Co. San, Benjamin Moore, Green Promise and the Benjamin Moore logo are registered trademarks of Benjamin Moore & Co.

Where's the Green Zebra?

For the first time since 2006, you won't find *Green Zebra* guides for sale at COLE HARDWARE locations. To conserve natural resources Green Zebra didn't print a 2011 edition. But don't despair! In January, Green Zebra is launching its new Green Zebra deals website, where you'll find huge savings from your favorite local green businesses, including COLE HARDWARE. Here's how it works:

Check Out the Deal. Sign up for free to get e-mail alerts when each new deal is launched, or view them at www.greenzebra.org. Green Zebra highlights what's green about the featured business, so it's easy for you to make conscious purchasing decisions that reflect your values.

Nab the Deal. Like what you see? Click the

BUY button to get in on the action. But don't dawdle, or you may miss out on the fun. Each Green Zebra deal is available for a limited time only, and sometimes there's a cap to the number of deals offered.

Share the Deal/Share the Love. Use Facebook, twitter or e-mail to spread the word to friends. When someone you refer signs up for Green Zebra deal alerts, we'll put \$5 into THEIR account to spend on a future deal. And when they make their first purchase, we'll add \$10 to YOUR account, too. Green Zebra continues its tradition of generous community support

by inviting subscribers to earmark a portion of every purchase they make to the charity of their choice.

Enjoy the Deal. Print out and redeem your voucher (or enter code for online purchases). You'll be supporting your community and the local green economy and saving some green, too!

COLE HARDWARE, a proud supporter of Green Zebra from the start, applauds this

local company's continuing efforts to promote green businesses, nurture community and help consumers embrace more sustainable lifestyles.

GreenZebra deals!
Local Savings for Sustainable Living

SFLOMA PARTNER OFFERS

THE PEACE OF MIND THAT ONLY COMES WITH AN UPDATED LIVING TRUST.

Don't wait for a crisis. Call **John O'Grady** today at **415 986-8500** to review your estate plan.

O'Grady Law Group, APC
50 California Street, Suite 3500
San Francisco, CA 94111
www.ogradylaw.com

shop here and your money stays here

SFLOMA
SAN FRANCISCO LOCALLY OWNED MERCHANTS ALLIANCE
SHOP LOCAL FIRST

We invite you to join SFLOMA. Membership is just \$25 per year, you receive one free ad in the *Hardware Hotline*, and you are eligible to advertise with us very inexpensively. Visit www.sfloma.org for information on how to join.

DAILY DEALS
50% - 80% OFF

From Your Local Merchants

@ mylocal121.com 

BUY ANY 2 GET THIRD FREE³

FREE THREAD

FROM BRITEX FABRICS

*MUST BE LESSER OR EQUAL VALUE. EXCLUDES SILK THREAD. LIMIT FOUR FREE ITEMS PER PERSON. ONE COUPON PER PERSON. Offer expires 1/31/11.

BRITEX
146 CLARY STREET, SAN FRANCISCO (415) 392-2910

Soulful Pilates
Balance your body, mind & soul

Buy any 10 class card,
get 10% off
(offer ends 1/31/11)

*Gift cards available
1501 Waller St. @ Clayton
415.664.4890

www.soulfulpilates.com

YOU GO, GIRL!

Then come on in to Ambiance. Bring this ad for:

10% OFF REGULAR ITEMS & AN ADDITIONAL 20% OFF SALE ITEMS*

AMBIANCE SAN FRANCISCO
1458 Haight
1864 & 1858 Union
3985 & 3989 24th
www.AmbianceSF.com

* Offer ends 1/31/11

20% off
ANY PARTS (with Major Tune-Up)
Coupon expires 1/31/11

Ocean CYCLERY
1935 Ocean Avenue San Francisco, CA 94127
(415) 239 - 5004 info@OceanCyclery.com
www.OceanCyclery.com

See what you've been missing.

sfappeal.com
San Francisco's Online Newspaper

Visit San Francisco's favorite independent bookstore and receive **20% off** any item.

GREEN APPLE Books
San Francisco

Offer does not apply to already discounted items. Expires Jan. 31, 2011.

WHAT'S UNIQUE?



Marpac® Sound Machine

Horns honking! Car alarms blaring! Buses speeding by! Sometimes getting a good night's sleep in the City is nearly impossible. Now you can fall asleep with the beautiful sounds of nature right in the middle of San Francisco with our new Marpac Sound Machine. The new Marsona® DS-600A features six assorted sounds that will rock you to sleep like a baby:

- The Lake Shore setting features gentle waves lapping against the shore.
- The Brook setting mimics a bubbly flow of water gently tumbling over the rocks of a mountain crevice.
- City transplants from the East Coast will enjoy the Country Eve sound of crickets and spring peeper frogs against a background of ambient evening sounds.
- A natural wave pattern with a multitude of ocean waves on the Surf setting might be

the choice of ocean-loving surfers.

- Experience the reassuring comforts of feeling safe, warm and dry as you listen to a calm, gentle rain with distant thunder with the Thunder Storm.

- A steady, constant background of White Noise, reminiscent of the roar of Niagara Falls, gently and effectively masks unwanted noise.



Push buttons, a timer and volume control in the compact size of 7.5" x 5" x 2.75" allow you to opt for the setting and volume level that works for you. Sleep tight!

(Sku 699201, **INTRODUCTORY SPECIAL \$89.99** Regular price \$99.99)



Pharox® LED Light Bulbs

As we move toward more energy-efficient lighting as mandated by Congress, LED light bulbs, or light emitting diodes, are seen as the next generation of energy-saving lighting.

Even more energy saving than the CFLs that we are all now accustomed to using, these new Pharox bulbs will fit into standard lamps and lighting fixtures and are also dimmable with some dimmers. Compared to an incandescent lightbulb, the Pharox bulb can save up to 90% of energy usage. And unlike CFLs, these warm white LED lightbulbs contain no mercury. As they become more prevalent in the marketplace, the once-prohibitive cost of LEDs is also coming down. The Pharox bulbs are available in either warm white or amber tone. They offer the same illumination as a 60-watt incandescent (using only 6 watts of energy) saving you up to \$237 over the lifetime of the bulb. (Skus 317200-1, \$36.99)



Pick one up today and start saving money and energy!

LunchBots™ Lunch and Snack Containers

It's a new year, and we will all be resolving to start going to the gym again and vowing to eat healthier! Let LunchBots get your resolutions off on the right foot in 2011! A healthy alternative to plastic containers for packing lunch to go, LunchBots are made from the highest-quality 18/8 stainless steel, and they do not leach chemicals like plastic does. Brown-bagging it, so to speak, saves you money, too.

The Unos and Duos sizes, with one or two compartments, respectively, are ideal

for children's lunches or for anyone concerned with portion size. Ecos are designed for larger adult portions, just right for a salad, large sandwich, or leftovers.

LunchBots make a perfect hostess gift when filled with homemade treats. The frequent traveler needs a "good" airplane meal, too. Pack them with baby carrots and apple slices to eat on the go. (Unos: Sku 630002, \$14.99; Duos: Sku 630003, \$14.99; Ecos: Sku 630113, \$16.99)



FROM THE GARDEN CENTER

VISIT OUR GARDEN CENTERS AT COLE AND POLK STREET STORES AND EL JARDIN AT MISSION STREET



In the Garden with Rick

January Garden Tasks

January is an excellent time of year to plan what you will grow in your garden in the upcoming months. Browse seed catalogs, magazines and books for inspiration to find the look and feel of your spring garden. Be bold and resolve to grow some new types of plants that you haven't tried before. What is the worst that can happen?

✓ Living Christmas trees should be outside by now. Keep them well watered in their pots or plant them, but remember that they will grow large!

✓ Take advantage of our usually wet weather and capture rainwater to use for your garden on dry days. A low-tech rainwater system as simple as placing indoor plants outside during a rain or empty buckets to collect rain will work. Or you can invest in a rain barrel to place under your downspout to collect larger quantities. Our Cole Street and Mission Street locations have two rain barrels in stock to choose from: a black 60-gallon barrel style (Sku 7200736, **HOT DEAL \$99.99** Regular price \$129.99); and a 50-gallon box style (Sku 7205396 **HOT DEAL \$69.99** Regular price \$99.99).

✓ Buy and plant bare root trees. Select a tree that is suited well for your microclimate. Consider the soil in which your tree will be planted and be sure to envision the tree at a mature height. Will it obstruct overhead wires or block a favorite view? Trees also need a lot of tender love and care and water (15 gallons a week) early to reach their full potential.

✓ Now is the time to plant bare root roses, as well as asparagus and artichokes.

✓ Newly planted trees may need some support as they grow large enough to stand on their own. Use arbor stakes and cross braces as needed to secure trees. Ties should be loose enough so that the tree can move enough to grow independently. (5-foot redwood stake: Sku 73609, \$2.99)



✓ Mulch for weed suppression and to protect plant roots. Use bark, straw, sawdust, leaves or peat moss as needed and to add paths in your

garden. Weed before applying approximately a 2-inch layer, or mulch and keep it at least an inch away from a tree trunk or plant stem. (Mulch: Sku 75958, \$6.99; Bark: Sku 7209570, \$7.99)



✓ Don't let your fireplace ashes go to waste. Use them to fertilize irises and other alkaline-loving plants.

✓ Pruning of trees, roses and perennials should be completed this month.



See you in the garden!



Dwarf Citrus Trees

Enjoy Your Own Meyer Lemons, Kaffir Limes and Valencia Oranges

Whether planted in the ground or in a container, dwarf citrus trees add beauty, fragrance and function to a landscape. The dwarf quality is achieved by grafting orchard-proven cultivars onto dwarf rootstock. Although dwarf citrus do very well planted directly in the ground, they are also commonly planted in ornamental containers. They can grow to 8 feet in the ground but will stay much smaller if container-planted.

Good Drainage Is Essential

If you are planting in the ground, place the dwarf citrus in a mound somewhat above grade and make a water well with a ring of soil about a foot from the stem. The top of the root ball can remain slightly exposed. If you will be planting in a container, make sure it is at least 16 to 20 inches in diameter.



Watering Is Key

Do not let your tree dry out completely. Watering twice a week may be sufficient, but gauge your watering schedule according to the weather, season and microclimate of your particular location. Newly planted trees need more frequent watering until they are established. If new growth wilts or leaves are dull, you are waiting too long to water.

Citrus Are Heavy Feeders

Fertilize regularly. If your plant has yellowing leaves, it usually indicates a lack of fertilizer or poor drainage. To thrive, dwarf citrus need lots of light, heat and water. The ideal planting location is next to a reflective wall with southern exposure. Do the best you can to satisfy this condition, but don't worry—the dwarf varieties available at COLE HARDWARE do extremely well in San Francisco's microclimates. Stop by our garden centers at our Cole Street, Mission Street and Polk Street locations to see the many choices.

Meet Norm: Furnace System Maintenance and Repair

For indoor air quality, energy efficiency and comfort, a well-tuned household heating/ventilating system is essential! We are proud to be affiliated with one of the most dependable and responsive heating, ventilating and air conditioning (HVAC) businesses in the Bay Area!

Norm operates his family-owned business from the "old school of customer service"—prompt, quality service using quality products. He has been in the heating, ventilating and air conditioning business since 1972 and has owned his own business since 1989.

He really knows his stuff—and passes that knowledge on to his team. Norm and crew can



help you out with anything to do with heating, ventilating and air conditioning: servicing of forced-air furnace systems, repair of furnace systems of all sorts, gas heater repair, stove ventilation, installation of new heating systems, water heater venting, installation of bathroom exhaust fans, which are essential to combat mold problems in your bathroom, and much, much more.

Norm also can educate you about the energy-efficient two-stage furnaces and thermostats that are now available. The average furnace lasts between 15 and 20 years. However, most homes in San Francisco are probably using a furnace that is over 40 years old! These furnaces are usually operating at only 50% efficiency and losing a lot of heat.

Furnace filter should be changed every four months for maximum efficiency.

Older furnaces should be checked once a year for leaks (cracks in the heat exchanger, the furnace's main component, can leak carbon monoxide), and the furnace filter should be changed every four months for maximum efficiency.

Norm and his crew truly take pride in their work and are a pleasure to do business with—quick to respond and happy to help. We've been working with them since 1995 and have heard

Older furnaces should be checked once a year for leaks.

nothing but praise from our customers. We're sure you'll feel the same way! If you are in need

of any of these or related services, call our Repair Referral Service at **415/753-2653 ext.3**, or e-mail **homerepair@colehardware.com**. We'll put you in touch with Norm. Your satisfaction guaranteed!

Dehumidifiers

During the cold, rainy season here in the Bay Area, the wet weather combined with closed windows and poor ventilation can result in some real problems. High levels of humidity in the air can cause damage to your home and its contents. Wet stains on walls and ceilings, musty odors, warped wood, peeling wallpaper, rusted tools, blistered paint, and mold growth are potential consequences.

Excess Moisture and Health Problems

Low humidity may make breathing uncomfortable for people with respiratory conditions, but generally speaking, low humidity does not cause health problems on the level that high humidity can. Mold and mildew flourish in damp environments and are primary contributors to allergy symptoms. Excess moisture can aggravate conditions such as arthritis and rheumatism, too.

Dust mites are microscopic organisms that live in bedclothes, curtains, rugs and even the air in a home. They thrive in humid conditions, and dust-mite activity increases the risk of asthma and allergy attacks. Small children (who spend a lot of time on floors and rugs) can be adversely affected by high moisture levels—the more they are exposed to things to which they have a genetic tendency to be allergic (such as mold, bacteria or dust mites), the more likely they are to develop allergies.

Indoor relative humidity of about 45% is
continued on page 11...

Repair Referral Service

COLE HARDWARE'S Repair Referral Service was created to introduce our customers to the finest contractors and tradespeople we know. We have formed alliances with independent businesspeople in order to provide you with the very best in home repair, maintenance and remodeling. Some jobs may even be performed by qualified members of our staff.

We provide referrals for:

Air Conditioning
Alarms/Security Systems/Access Control
Antique Restoration
Appliance Repair and Installation
Arborist
Architectural Planning
Asbestos Removal
Bath Resurface
Brick and Stone Masonry
Cabinetmaking
Carpentry
Carpet and Linoleum Installation
Carpet Cleaning
Chimney Sweep and Repair
Commercial Kitchen Installation
Computer Data Cabling
Computer Grounding
Computer Repair and Tutoring
Custom Closets, Pantries
and Storage Solutions
Decks New/Stain
Design + Build
Disaster Cleanup and Restoration
(Flood/Fire/Sewage)
Door Refinishing
Drain Cleaning
Drywall/Lath
Duct and Dryer Vent Cleaning
Electrical 24/7

Emergency Locksmith
Emergency Power Restoration
Faucet Repair and Installation
Fences
Furnace Repair and Installation
Furniture Refinishing and Repair
Furniture Upholstering
Garage Door Repair/Installation
Gardening/Pruning/Tree Trimming
General Contractors
Glass Installation
Handyman Services
Hardwood Floors New/Refinish
Hauling
Home and Office Organizing
Home Entertainment Systems
Insulation Installation
Intercom Systems
Interior Design, Staging
and Color Consultation
Interior Wood Refinishing
and Restoration
Iron and Metal Works/Gates
Kitchen and Bath Remodeling
Landscaping
Lead Inspection and Abatement
Leak Diagnosis/Waterproofing
Lock Installation
Locksmith Service 24/7

Mold Remediation
Moving
New Construction
Painting Interior/Exterior
Plumbing 24/7
Powerwashing, Commercial
and Residential Cleaning
Remodeling/Major Remodeling
Roofs New/Repair
Room Additions
Safes
Security Evaluation/
Consultation
Seismic Upgrading
Sheet Metal Work
Shutter Installation
Skylights
Solar Energy Installation
Stained Glass Creation
and Repair
Stucco Work
Telephone System Installation
Tile Installation
Wallpaper Application
Water Heater Installation
Welding
Window Cleaning/Repair
Windows and Doors



Contact us at **www.colehardware.com/homerepair**

Historic Home Preservation with Gina and Mike

San Francisco is fortunate to have the many Victorian and Edwardian homes that give the City its distinct look and charm. We're also fortunate that many homeowners see themselves more as stewards of a historic property, rather than just the owner of a house, and go to painstaking lengths to restore homes to their original period detail, instead of knocking them down and rebuilding. After all, the "greenest" homes are those that are already built.



Restoring local character of properties of all eras, from Victorian to midcentury modern, is just one specialty of our Design + Build partners Gina and Mike, both general contractors. Combining building experience and artisan skills, Gina and Mike employ the latest in technologies and code compliance, while maintaining the property's original design and craftsmanship. To give you an idea of the quality of their work, Gina and Mike shared one of their restorations with us.

An imposing 1907 Arts and Crafts home of 3,000 square feet had been painstakingly restored to many of its original features after 30 years of being a poorly maintained boarding house and rental property.

In 2001, a fire severely damaged almost half of the house—structural walls, kitchen, bathroom and much of the period architecture was damaged by smoke and water. The homeowner used the opportunity to restore and modernize the functionality of the home without losing its historical and

architectural integrity.

Their design solution was to maintain continuity of the Arts and Crafts architecture throughout the home, from kitchen and bathroom remodels to room-by-room finishes: Bradbury & Bradbury wall coverings; wall-color palette; original period lighting and repaired/restored inlaid floors. Today the home provides period form and modern function.

Floor-Plan Upgrades:

- Converted the original three-room kitchen (service porch, butler's pantry and kitchen area) into one spacious eat-in kitchen
- Converted linen storage room into a second-floor laundry room
- Converted main floor walk-in closet under staircase into powder room

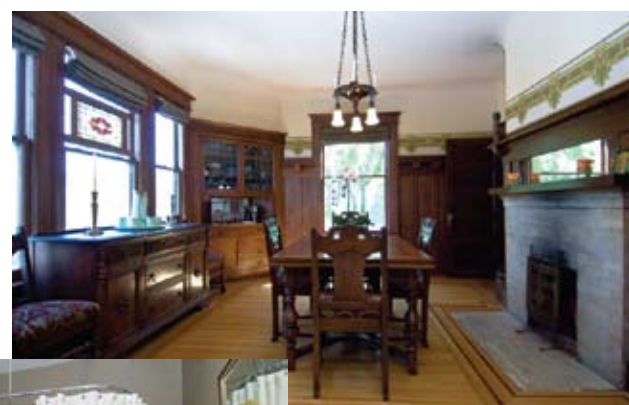
Specifics:

- The kitchen remodel was the largest development in the home. The kitchen now provides the homeowner with a state-of-the-art chef's kitchen with Arts and Crafts styling. Period products are installed throughout the kitchen: Heartland six-burner gas stove, custom-paneled Bosch dishwasher and period lighting from Rejuvenation.
- The cabinets are cherry wood, shaker style with typical 1907 hardware. The installation of oak hardwood flooring includes perimeter inlays to compliment the floors in the rest of the home.
- The bathroom remodel combines 1907 replica fixtures—tub from Sunrise Specialties and pedestal sink and toilet by Kohler—with an original-period washstand used for storage to maintain form and function in the bathroom.

The room is complete with beadboard wainscoting, porcelain hex tile floor and period lighting.

- A powder room was added.
- An art glass window was salvaged, restored and installed into the originally windowless closet.

- An understair storage cabinet was also added.
- The added laundry room provides maximum use of space with a stackable laundry system, recessed ironing board wall cabinet and pull-down staircase to large attic storage space.
- Art glass windows were created throughout the home to provide art and function—from



entryway porch window to panel doors between the living and dining rooms.

- All interior and exterior lighting was replaced. The interior was outfitted with the original gas lighting infrastructure, though no fixtures survived, leaving the home with almost no overhead lighting. Original restored lighting was sourced and installed in many rooms of the house—along with significant electrical upgrades.
- Local artisans and color consultants helped develop the interior and exterior palettes for complete interior/exterior paint.
- Much of the original redwood interior surfaces—mouldings, doors and built-in cabinetry—were covered with many, many layers of paint. The paint was removed and the wood restored to its original beauty.
- Infrastructure improvements included heating, electrical panel and many plumbing upgrades.
- A second-floor redwood deck was added to "bring the inside out" with period lighting and art glass features.



Gina and Mike, our expert remodeling team

If you are considering restoring your home to its original glory, please consider Gina and Mike for the job. To reach them, phone **415/753-2653 ext. 3** or e-mail **homerepair@colehardware.com**. Both Gina and Mike are certified with the Environmental Protection Agency's new lead renovation laws, as discussed on page 12 of the *Hardware Hotline*.



PRODUCT KNOWLEDGE

Cleaning the Air You Breathe

There is more to keeping your home clean than just cleaning surfaces like counters and carpeting. A really clean home starts with cleaning the air your family breathes. Have you ever noticed dust particles floating in a stream of sunlight? These are only a small fraction of the particles that can be found in the air in your home. Many particles are invisible to the naked eye and can lurk in the



air for a long time. These microscopic particles can be as small as 0.3 microns. For comparison, the width of a human hair is about 50 microns.

And particles in the air aren't just dust. They can include pollen, plant and mold spores, pet dander, lint, and dust mite debris. Some particles can carry bacteria and viruses, and many everyday activities in the home such as dusting, vacuuming, cooking and smoking can increase concentrations of these particles.

The U.S. Environmental Protection Agency (EPA) says the air inside your home can be two to five times worse than the air outside. In fact, the EPA identifies indoor air pollution as one of the top five environmental risks to public health. And if you're like many people, you probably spend about 90% of your time indoors.

No matter how well you clean your home, airborne particles can still circulate. By using a Filtrete™ filter, you can help reduce even microscopic particles from the air passing through the filter.

Filtrete filters help clean the air in your home by capturing allergens from the air that passes through the filter. The Filtrete filtering material consists of electrostatically charged fibers. These charged fibers act like tiny magnets to attract and capture more small particles than ordinary filters such as fiberglass and washable/reusable filters. The forced-air heating and cooling system in your home can do more than just keep you comfortable. It can actually help improve the quality of the air in your home. All it takes is a

high-efficiency air filter like a Filtrete filter from 3M®.

More Ways to Help Reduce Airborne Particles in Your Home

Particles like mold spores, dust mites and their debris, pet dander, and pollen are just some types of particles that can travel through the air undetected. Here are some suggestions for helping to reduce these particles from the air in your home.

1. If you have pets, bathe and groom them often. Minimize their access to carpeted areas and bedrooms of anyone in the house with sensitivity to pet dander. Pet dander (minute scales of animal skin) can aggravate allergies and asthma.

2. Fabric window coverings are like magnets for dust. Use window shades made of plastic, wood or other washable materials for easy cleaning.

3. Mold can be found in the soil of houseplants, so check them often. If mold growth is evident, the plants may need to be repotted or kept outdoors.

4. Prohibit smoking in the home. Homes with one or more smokers often have particle levels several times higher than outdoor levels.

5. Place allergen-resistant covers over mattresses and pillows. Feather pillows and down comforters are not recommended for individuals with sensitivity to feathers or down materials. Bedding should be washed every week in water that is at least 130°F (hot setting).

continued on page 11...

Which Filter Is Best for You?

At COLE HARDWARE, we have three different Filtrete filters to choose from, depending on your specific needs and wants.



Filtrete Ultimate Allergen Reduction Filter

- For people who want a high-performing filter
- No competitive 1" filter performs better
- Microparticle Performance Rating (MPR) 1900
- Captures microscopic particles such as smoke, smog, household dust, pet dander, bacteria, particles that can carry viruses and tobacco smoke odors

Filtrete Ultra Allergen Reduction Filter

- For people looking for better ways to reduce the airborne allergens in their home
- MPR 1500
- Captures large airborne allergens like household dust, pollen and mold spores
- Attracts and captures microscopic allergens like pet dander, smoke, smog, bacteria and particles that can carry viruses

Filtrete Micro Allergen Reduction Filter

- 3M's best seller
- For people who want to help reduce allergens and microscopic particles from the air in their homes
- MPR 1000
- Captures large airborne allergens like household dust pollen and mold spores
- Attracts and captures microscopic allergens like pet dander, smoke and smog particles



ENVIRONMENTAL INFO

GOOD FOR THE EARTH — WE TAKE ACTION FOR THE ENVIRONMENT!

Be Paint Wi\$e Partnership a Year Later

A year ago COLE HARDWARE joined with the Be Paint Wi\$e Partnership to educate consumers on how to estimate the correct amount of paint for their painting projects, while continuing to take back S.F. residents' leftover latex paint. In this past year, COLE HARDWARE stores have collected over 8,000 gallons of paint. But do you know what happens to your leftover latex paint after you bring it to one of our stores?



In San Francisco, Recology—the City's hauling company—has been remixing paint for reuse for 20 years! The household hazardous waste team at Recology takes the latex paint collected from participating retail stores like ours back to the Household Hazardous Waste Facility on Tunnel Avenue and sorts out the good (reusable) from the bad. The facility doesn't remix paint that is rusty or moldy or too thick from drying out over the years. The paints that are good quality and make the cut to be remixed are sorted into warm and cool colors in large mixing drums. Once the paints are fully blended, they are poured into 5-gallon buckets. The recycled latex paint is then available for free to San Francisco residents and businesses on a first-come basis. Call Recology at **415/330-1405** for more details.

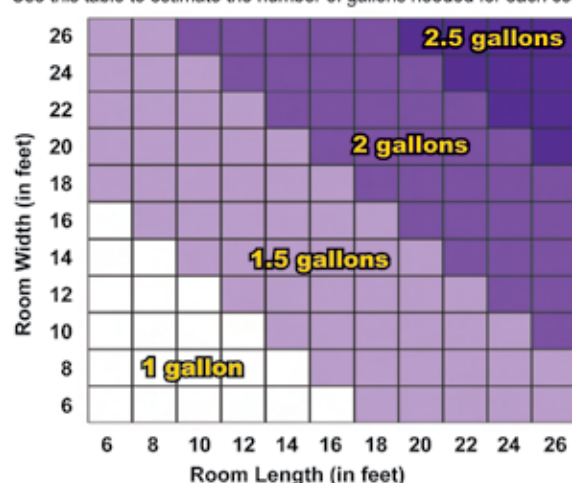


Reuse is the highest use for discarded and unwanted paint, and the Be Paint Wi\$e Partnership has been educating people about paint reuse as one aspect of their project.

In the end, the best way to avoid excess paint is to calculate properly before you purchase paint for your project. Using this chart can help you correctly estimate the amount of paint to

PAINT MATRIX

Use this table to estimate the number of gallons needed for each coat.



purchase. You can also pick up one of these cards at our stores or ask a paint sales associate to help you determine the right amount of paint.

More information about the Be Paint Wi\$e Partnership project is available at the California Product Stewardship Council's website, www.calpsc.org (look for Paint Grant under the Projects tab).

COLE HARDWARE: Partnering to Make a Difference

By Annie Joseph, Our Water, Our World

For the past 10 years, the San Francisco Public Utilities Commission (SFPUC) has been helping local residents to make a difference in their own backyards by sponsoring a water pollution prevention program called Our Water, Our World (OWOW).

The OWOW program is a partnership between the SFPUC and local retail nurseries and hardware stores who sell pesticides. The garden staff at COLE HARDWARE has been trained in Integrated Pest Management (IPM) and in how to reduce pesticides and other pollutants from running off local gardens into the Bay.

Through this training, they have learned how to troubleshoot pest problems using the

following five steps:

- Monitoring for pests and diseases to catch them before they get out of hand
- Cultural controls, which are horticultural practices that can reduce pest populations, such as using organic fertilizers to encourage slow, steady growth that will be less attractive to aphids and white flies
- Physical controls, like cutting off a diseased branch or handpicking snails and slugs
- Biological controls, such as encouraging ladybugs, lacewings, and birds to help manage the pest damage



continued on page 11...

Recycle at COLE HARDWARE!



Bring to any of our four stores:

CELL PHONES:

Personal cell phones—batteries and chargers not required. PLEASE, no cordless home phones, car phones, walkie-talkies, pagers or two-way radios.

BATTERIES:

Rechargeable (NiCad, NiMH) and household (alkaline and carbon).



OLD LATEX PAINT:

- Recycle dry, clean, empty metal paint cans through your regular trash pickup. The latex paint containers you bring us should have paint in them!
- The ORIGINAL label on each can must CLEARLY state "latex," "acrylic," or "water-based" paint. No handwritten labels will be accepted.
- Be sure that lids are SEALED ON TIGHT and containers are rust-free and don't leak.
- You must not be a commercial paint user.
- Please limit your drop-offs to no more than 10 gallon-size containers (or 40 quart-size containers or a combination of both) at a time. Containers are counted by size, not by the volume of paint they contain.
- Take paint to the customer service desk.
- PLEASE, no brushes or rags!



PROPANE TANKS:

Small (14 or 16.9 oz.), empty, nonrefillable propane cylinders only. Household only. Limit 5 per visit.



SPENT FLUORESCENT BULBS:

CFLs, tubes up to 8 feet, U- and D-shaped tubes. Drop-off limit is 10 bulbs.



SCRAP METAL:

Copper and brass.

EXPIRED PRINTER CARTRIDGES:

Must be in plastic bags to avoid leakage.

SOFT PLASTIC RECYCLING:

Clean plastic only. Households only. One basketball-size amount per visit please.

For Bay Area recycling resources, visit www.colehardware.com/recycle.htm

WHAT'S IN SEASON

Feeding Wild Birds

Wild birds are extremely beneficial to a garden or yard. They eat large quantities of bugs and are one of the best natural means of keeping detrimental insects under control. Birds also add liveliness and music to gardens in all seasons, and children can acquire an early interest in nature by watching them flock to a feeder.

Types of Feeders

• **Tube feeders** are easy to fill and hang, and they hold quite a bit of seed.

• **Platform feeders** are generally constructed of wood. They tend to waste significant amounts of seed due to theft by squirrels and other predators. However, they are excellent for attracting birds that do not readily visit perched feeders.

• **House or hopper-type feeders** may be constructed of wood, plastic or glass. Bigger models hold large quantities of seed and allow several birds to perch at once. (Sku 8125213, \$15.49)



• **Window feeders** are usually plastic and contain a suction cup for easy mounting to windows. Birds have a tendency to crash into windows if they are too clear, so care must be taken! (Sku 8192452, \$7.99)



• **Suet and fruit-basket feeders** are generally made from plastic-coated wire and can accommodate anything from a single suet cake to fruit or bread. Suet nets or "thistle socks" are for feeding Nyjer® seed to finches.

• **Hummingbird/oriole feeders** contain a delivery system of nectar or sweet liquids for hummingbirds and fruit-loving birds. (Sku 8137523, \$6.49)

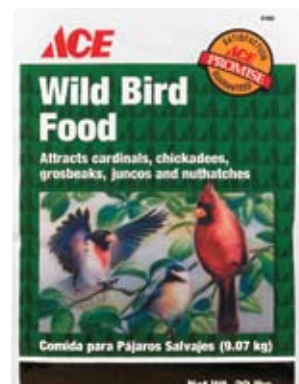


Location, Location, Location

Some birds may never come to a feeder if it is either too close to a building or makes them sitting targets for predators. Keep feeders about 15 feet away from shrubbery, overhanging limbs

or other hiding places. Do our feathered friends a favor and "bell" cats that are outside.

For year-round feeding, we recommend Kaytee® Wild Bird Food featuring millet and black oil sunflower seed, plus a variety of other ingredients to attract many different types of colorful birds. Added vitamins and minerals help wild birds through the winter season. Available in a 20-pound bag.



(Sku 81995, **HOT DEAL \$5.00 through January 16** Regular price \$6.99)

Visit any of our garden centers to see our many types of feeders and seed!

BE ON GUARD THIS SEASON!

PROPER PROTECTION MEANS LESS HOURS LOST TO ACCIDENTS AND ILLNESS

Steel Toe & Midsole Chest Wader with Ultragrip Outsole

Ultimate, waterproof protection to the chest

\$139⁸⁸
reg. \$145



16" Steel Toe & Midsole with Ultragrip Outsole

Excellent underfoot protection. Designed to provide exceptional puncture resistance

CUSTOMER FAVORITE!

\$59⁸⁸
reg. \$62



Steel Toe & Midsole Hip Wader with Ultragrip Outsole

Superior, waterproof protection to the hips

\$96⁸⁸
reg. \$100



COMMERCIAL SUPPLY

SPECIAL PRICING GOOD THROUGH JANUARY 31, 2010

CALL US TODAY AND START SAVING!

(415) 647-1800

Cole Hardware Commercial Supply offers competitive pricing and unparalleled service to property managers, contractors, municipalities and anyone else needing project quantities. With our expert research team, hassle-free online ordering and free delivery throughout the Bay Area on most items, we give you personal, customized, on-site service. And, because we're Cole Hardware - Your satisfaction guaranteed. Period.



Thermalogic™ Energy-Efficient Curtains

Fashion meets function with these energy-saving curtains. The insulated backing keeps warm air inside during the cold winter months and cool air inside during hot summer days. Save money on your energy bill by minimizing drafts, and reduce glare on computer monitors and television screens, while at the same time protecting carpets and furniture from fading.

Front panels are made of 100% cotton; the back side is 100% acrylic suede. These machine-washable curtains are available in five tasteful colors: Natural, Terracotta, Chocolate, Robin's Egg Blue and Khaki. Choose from 63" (\$44.99) or 84" length (\$49.99) for two panels that measure 80" wide. Available at Cole Street, Mission Street and Polk Street locations.

COLE HARDWARE: Partnering to Make a Difference

...continued from page 9

- Chemical controls as the last resort and starting with the least toxic first, like an insecticidal soap or horticultural oil

When you visit the garden section in the four COLE HARDWARE locations, you will find colorful shelf talkers that clearly identify the nontoxic and



less-toxic products. They also have a literature rack with free, highly informative fact sheets that guide gardeners through healthy practices to manage problem pests.

One of the most popular fact sheets is "Growing a Healthy Garden." It includes a list of plants, many of them native, that are nectar and pollen sources for the beneficial insects that help keep the garden in balance. You'll also find fact sheets on what pesticides are of utmost concern for our waterways, how to find a company that

will help you prevent pest problems, and how to dispose of old pesticides and fertilizers that are gathering dust in your storage shed or garage.

In addition to picking up the fact sheets at COLE HARDWARE, you can view and download them at the Our Water, Our World website at www.ourwaterourworld.org. You can also download a pocket guide called "Pests Bugging You?" This guide conveniently fits in your wallet and helps you to manage the 10 most common pests.

Another popular feature on the site is Ask Our Expert, which is manned by the Bio-Integral Resource Center (BIRC), a nonprofit in Berkeley. You can submit questions about garden pests Monday through Friday and get a very thorough answer within 24 hours.

In addition to partnering with programs such as OWOW, COLE HARDWARE is on a tireless search for the newest and most effective nontoxic and less-toxic products from local and national sources. Their goal, as well as ours, is to help you solve your pest problems with the least impact on the environment.

Cleaning the Air You Breathe

...continued from page 8

6. Reduce indoor humidity to less than 50%. This may vary from region to region, so be sure to consult with your personal physician for an appropriate recommendation. This level will help reduce—and potentially eliminate—mold growth and dust mites. However, if humidity levels are too low, viruses and bacteria in the home can spread more easily or aggravate respiratory issues.

7. Never store more than a few pieces of firewood indoors. Drying green firewood inside your home can introduce airborne particles into your entire house.

8. Keep trees and shrubs at least three feet away from the perimeter of a home. Tree and shrub roots can give surface water an easy route into a basement, which can lead to mold growth.

9. Remember that a little common sense goes a long way. Regularly clean places where allergy-causing mold is likely to grow or dust mites might accumulate, including the kitchen, bathroom and basement.

Dehumidifiers

...continued from page 6

ideal and can be measured with a hygrometer. The Taylor® Humidiguide and Thermometer shown here measures only 4" square. (Sku 63569, \$9.49)



can be drained into the removable bucket, or a hose can be attached for constant drainage. The automatic shutoff prevents overflow, and a light signals an alert when the container is full. The attractive, modern-European styling complements any décor. (Sku 4350088, \$154.99)

Removing Moisture

Dehumidifiers remove moisture from the air, reducing instances of sticking windows, doors and drawers, dripping pipes, and musty odors and curbing the growth of mold and dust mites. From paint on the walls to carpet on the floor, things last longer and stay in better condition. Dehumidifiers are especially useful in areas where humidity collects, such as bathrooms and damp garages and basements.

Perfect Aire® Dehumidifier

This dehumidifier is one of the best. It's a compact (21 1/4"H x 15 1/2"W x 13 3/8"D), portable, water-guzzling workhorse that will remove up to 30 pints of water from the air in just 24 hours! The adjustable humidity control has an internal humidistat to cycle the unit on and off, maintaining the desired level of humidity.

There are two drainage options: water



Eva-Dry™ Mini Dehumidifier

A compact, convenient way to reduce mildew-causing moisture in places like closets or cabinets, this unit is also small enough (4 3/4"H x 6"W x 1 1/4"D) to fit in drawers or filing cabinets. It's 100% renewable and has an approximate life span of 10 years.

It needs no power to operate and needs only a small amount of power to regenerate. (Sku 4205597, \$21.99)



DampRid®

Tub-type dehumidifiers are designed to work in areas where electrical dehumidifiers are not practical. Put a tub in storage units and tool sheds—just open, pour the crystals out of the bag, leave in a corner and drain every week. The DampRid

Hanging Closet Freshener absorbs excess moisture in small, enclosed areas, such as clothes and linen closets, and dries the air to a level where mildew can't grow (Sku 70252, \$3.99).



COUPON



\$5 INSTANT GIFT CARD
with any \$10 purchase
(Sku HH5)

Offer valid with coupon only.
Not valid on purchases of
Muni passes, meter cards, gift cards,
or special orders.
Not valid with any other offer.
Expires January 31, 2011.

New Laws in Effect for 2011

With each new year comes a new round of laws we must all familiarize ourselves with. Here's a recap of laws that will be in effect starting January 1 (or already in effect, in some cases) to keep us all law-abiding citizens.

Say Good-Bye to the Incandescent Lightbulb!

Effective January 1, the federal government has mandated the eventual elimination of the standard lightbulb. Starting with the 100-watt bulb (now actually 95 watts), you'll begin to see a phase out. The energy-efficiency bills were passed in 2007, and they affect what is known in the industry as an A-line lamp. Manufacturers can no longer make them after the first of the year. Needless to say, General Electric and their cousins are stockpiling now. And we can still sell them to you until supplies run out, so you should be able to get replacement bulbs until spring.

What to do? Buy now and keep a bit of inventory in your closet. Or better yet, bite the bullet and resolve to replace your remaining standard lightbulbs with CFLs or LED lightbulbs. The up-front cost can be a bit more, but they are much less expensive and much more energy-efficient in the long run. Plus we still have lots of the PG&E-subsidized CFLs in stock. They save tons of energy and last for years.

Lead Contamination and Renovation Laws

Federal law requires contractors that disturb painted surfaces in homes, child-care facilities and schools built before 1978 to be certified and follow specific work practices to prevent lead contamination. The law requires that individuals receive certain information before renovating more than 6 square feet of painted surfaces for exterior projects or window replacement or demolition in any of the above-mentioned facilities.

Lead is especially dangerous to children under six years of age and can affect a child's brain and developing nervous system, causing reduced IQ, learning disabilities and behavioral problems. The most common exposure to lead is through dust. Regularly clean floors, window sills and other

surfaces to minimize your exposure to lead.

During renovations, repair or painting jobs, the key to protecting yourself and your family is to employ lead-safe work practices, such as containing the dust inside the work area, using dust-minimizing methods and conducting a careful cleanup.

All contractors and painters in our Re-COLEmend Repair Referral Service are certified in the new lead laws in effect. For more information, you can visit epa.gov/getleadsafe or call the National Lead Information Center at 1-800-424-LEAD.

The above information is from "The Lead-Safe Certified Guide to Renovate Right" from the Environmental Protection Agency. Renovators must provide you with a copy of this guide before commencing work.

Winter Spare the Air

Sister to the Summer Spare the Air program, the Winter Spare the Air program notifies Bay Area residents when particulate levels are anticipated to be unhealthy. In the wintertime, particulate matter 2.5 microns or smaller in size (PM2.5) can become a serious problem in the region. To protect public health, the Bay Area Air Quality Management District will issue an alert. When an alert is in effect, burning wood, fire logs, pellets or other solid fuels in your fireplace, woodstove or other wood-burning device is illegal. When wood burning is allowed, residents must still burn cleanly using dry, seasoned firewood and not burn garbage, leaves or other material that would cause excessive smoke. Residents who exceed the excess visible smoke provision in the wood-burning rule could still be subject to an air district citation or penalty.

You will notice that all logs and firewood that you purchase now is labeled with this wood-burning information. To confirm if it is okay to use your fireplace, call 1-877-4NO-BURN or visit sparetheair.org.

The above information is from the Bay Area Air Quality Management District website.

Carbon Monoxide Poisoning Prevention Act

Carbon monoxide (CO) poisoning is the leading cause of accidental poisoning the United States. High concentrations of this colorless, odorless gas can cause cognitive impairment, loss of

consciousness and/or coma for an average of 450 deaths and more than 20,000 emergency room visits each year.

Effective January 1, the new California carbon monoxide legislation goes into effect. The new construction law requires CO alarms to be installed in dwelling units and sleeping units in which fuel-burning appliances are installed and in dwelling units that have attached garages.

Alarms must be hardwired with a battery backup and must be installed in areas outside of each separate dwelling unit sleeping area and in the immediate vicinity of bedrooms. When more than one alarm is installed, they must be interconnected in a manner that activation of one alarm will activate all of the alarms in the unit.

Beginning July 1, all existing single-family homes that contain a gas heater or appliance, fireplace, or attached garage must install CO alarms, which must be either battery powered or plug-in with a battery backup. Alarms must be installed outside of sleeping areas and on every level of a dwelling, including the basement.

Protect your family and loved ones with these CO alarms available at all COLE HARDWARE locations:

First Alert® CO Battery Operated Detector: Using two AA batteries, this biomimetic sensor samples the air once every second. Tabletop use or wall mount. (Sku 5137864, \$19.99)

First Alert® CO Plug-in Alarm: The intelligent sensor reduces nuisance alarms as air is tested every second, automatically performs internal testing and features an 85 dB alarm. (Sku 5351267, \$27.99)

First Alert® CO and Smoke Alarm: Photoelectric technology that features a unique horn sound and lights to distinguish between CO and smoke incident. Two AA batteries included. (Sku 5392998, \$39.99)

Visit any of our stores should you have any questions on these new laws, and one of our friendly crew members will gladly assist you with your inquiries.



CUSTOMER SERVICES

THE EVER-GROWING LIST OF EVERYTHING WE DO FOR YOU

ACE® Hardware: Our affiliation with ACE allows us to get quality products quickly and opens doors of the world's manufacturers, so we can get you what you need. ACE's buying power enables us to sell to you at the right price, too!

ATM and Credit Cards: We'll accept your ATM cards for payment. You can get cash back, too. We also accept VISA, MasterCard, Discover and American Express credit cards.

Balloons: We have free COLE HARDWARE helium balloons for the kids. Helium is available to inflate your party balloons for fifty cents per balloon.

Bridal and Gift Registry: We'll load your name and list of everything you wish to register in our computer. Your friends and family can then call us to place gift orders. Recipients receive a gift card equal to 10% of the total value of all gifts purchased. E-mail Julia@colehardware.com.

Business-2-Business: Members of the program receive free delivery, special pricing and personal service. Call our Cole Fox location at 415/777-4400.

Carry-Out Service: We'll be happy to load your purchases into your car. Just let the cashier know, and we'll take care of you.

Charge Accounts: For your convenience, we have in-house charge accounts for businesses. Stop by and fill out the simple application, and we'll open one for you.

Chauffeur Service for Senior Citizens: If you need help getting to our stores and you live in San Francisco, call us to arrange a mutually convenient time to pick you up.

Color Matching: We have terrific paint matching computers. Bring in a swatch of fabric or quarter-size paint chip and the staff can match just about any color.

Commercial Supply: We have an entire division devoted to servicing the needs of commercial and industrial customers throughout the Bay Area and beyond. We offer charge accounts, on-site account specialists, free delivery and the personal services of Joe, Damion, Melinda, and Rodney. Give them a call at 415/647-1800 or e-mail colesupply@colehardware.com

Community Savings Days: One day a month, we offer a 20% discount to students, seniors, school district employees and active members of the military or veterans. The promotion cannot be applied to Rewards accounts and is not valid on gift cards, Muni or special orders.

Coupons: We honor all manufacturers' coupons. If we carry the product, we'll honor any other store's coupons as well.

Delivery in San Francisco: Free delivery for Rewards members on weekends. For non-Rewards shoppers, delivery is free for purchases of \$100 or more, \$10 for purchases with total pretax amount under \$100, and \$5 for the elderly or disabled.

Digital Camera: Have a problem that you can't describe? We'll lend you a digital camera to take a photo of the problem so that we can better help you. (Note: Credit card required for camera loan.)

Discounts:

Birthday Discount: Come in on your birthday, show your I.D. and we'll give you a percent discount amounting to half your age. Must be a Rewards member. Discount is available only on your actual birthday and cannot be applied to sale/promotional merchandise, power tools, household appliances, water heaters, special orders or Muni. Discount applies to purchase for the personal use of recipient only. Maximum discount \$100.

Disabled Customer Discount: Sign up for our Rewards program, show your Medi-Cal card or other proof of disability, and get 10% off all discountable merchandise in our stores.

Senior Citizen Discount (age 65 or older): 10% off all purchases of nonsale merchandise.

Student Discount: Show us your student I.D. and receive a 5% immediate discount, plus 5% annual rebate, custom key tag, use of our fax machines and more!

Electrician: Call our Home Repair Referral Service at 415/753-2653 ext. 3 Monday through Friday 8:00 am–5:00 pm and after store hours for emergency referrals 24/7. On weekends and during store hours, dial 415/753-2653 and press 3 for a direct referral.

eLine: The COLE HARDWARE eLine is delivered free, direct to your desktop. The eLine contains information on new products, practical tips and more (or less!). Sign up at www.colehardware.com.

e-mail: Write us at service@colehardware.com—any time!

Fax Service: Our fax machines are for your personal use. We do charge for our fax service—please ask for rates. Fax numbers: Cole Street: 415/753-0957, Mission Street: 415/647-6554, Cole Fox: 415/777-4453, Polk Street: 415/674-8917.

Gift Cards: We offer COLE HARDWARE gift cards and ACE Hardware gift cards in almost any denomination.

Glass Cut to Size: Plexi, single and double-strength glass cut while you wait. We can also special order curved, tempered, laminate and obscure glass, as well as mirrors and tabletops.

Hardware Hotline: We publish our newsletter every month of the year. See the online version at www.colehardware.com. It's homegrown and filled with interesting articles about hardware, our community and, of course, COLE HARDWARE.

Hours of Operation: We're open every single day of the year including every holiday.

Cole Street: weekdays 7 am–7:30 pm, weekends 8 am–7 pm

Cole Fox: weekdays 8 am–7:30 pm, weekends 9 am–5:30 pm

Mission Street: weekdays 7 am–7:30 pm, weekends 8 am–7 pm

Polk Street: weekdays 8 am–8 pm, weekends 9 am–7 pm

Lamps Rewired: We offer rewiring services for table and floor lamps. Contact our stores for information and pricing.

Lifetime Warranty: Your "complete satisfaction" dictates that we offer a lifetime warranty on just about everything we sell.

Locksmith Service and Key Cutting: We cut keys at all our stores including hard-to-find computer chip keys for automobiles. We have an expert locksmith on duty Monday to Friday at our Cole Fox store downtown (415/777-4400). We can also send a locksmith to your home or business 24/7. Call 415/753-2653 ext. 3 Monday to Friday 8:00 am to 5:00 pm, or after store hours, dial 415/753-2653 and press 3 for a direct referral.

Low Price Guarantee: Just bring in another store's ad and we will honor the lower price.

Muni: We sell monthly Adult, Youth and Senior Fast Passes, monthly Disabled Stickers, 1-Day, 3-Day and 7-Day Passports and Parking Meter Cards in \$20 and \$50 denominations.

Pipe: We cut and thread galvanized and black pipe, your pipe or ours. (Note: Cole Fox can't thread.)

Plumbing Service: Call our Home Repair Referral Service at 415/753-2653 ext. 3 Monday through Friday 8:00 am to 5:00 pm and after store hours for emergency referrals 24/7. On weekends and during store hours, dial 415/753-2653 and press 3 for a direct referral.

Recycling: Bring your old latex paint (S.F. residents only; liquid paint only—put dried paint cans into your own recycle bin, lids off!), used rechargeable batteries (nickel-cadmium), used household batteries (alkaline and regular), copper and brass scrap metal (such as keys, bathroom and plumbing fixtures), cell phones, expired printer cartridges and spent fluorescent bulbs into any of our four stores, and we will send them off to be recycled into new products. See page 9 for details.

Repair Referral Service: Our alliances with competent, honest, quality tradespeople assure you excellent work on your home, property or office. We are a licensed contractor (#708403). Call 415/753-2653 ext. 3 or go to www.colehardware.com/homerepair.

Repotting Service: Pick out the plant and the pot, and our Cole, Mission or Polk Street Nursery staff will repot your plant for free.

Return Policy: We accept returns on just about anything. (Power tools, appliances, etc., may only be returned subject to manufacturer's warranty. Hand tools exchanged for defective replacement only.)

Rewards Program: Earn an annual 5% dividend on purchases and much more. Membership is quick and free. Sign up today!

Room Painting Software: All of our paint departments are equipped with room painting software. Simply bring in your camera's memory chip, upload your image and choose paint colors to review.

Rug Cleaners Rented: We have steam carpet and upholstery cleaners available for rent at each store.

School and Community Assistance Partnership Program: Nonprofit organizations whose mission is to improve the lives of those around us, either directly or through cultural enrichment, can join a special program of discounts and donations. COLE HARDWARE donates 10% of all purchases made by your organization's community. Go to our COLE HARDWARE Community Partners page for information and a list of partners (page 15). Also, be sure to check out www.colehardware.com/partners.

Sharpening Service: Knives and scissors sharpened while you wait or same day service at our Cole, Mission and Fox stores (Note: Fox doesn't sharpen scissors, just knives).

Speakers Bureau: Topics range from home repair, to gardening, to security, to small business, marketing and more. If you need a speaker for your organization, call 415/753-2653 ext. 5.

Special Orders: If we don't have what you need in stock, we'll do our best to obtain it as quickly as possible.

Tool Rental: We rent floor sanders, many hand and power tools, and garden tools, too. Contact our stores for availability. (Note: Floor sanders not available at Cole Fox or Polk Street stores.)

UPS Shipping Service: We ship packages all over the country for our Rewards members via United Parcel Service.

Website: Visit www.colehardware.com.

Windows, Doors and Window Screens: Window and screen repairs are available at our Cole Street and Mission Street stores. Contact these stores for information and pricing.

By the way, we sell hardware, too.



COMMUNITY CONNECTIONS

BAY AREA BUSINESSES

Attorney: Practicing 25 years in San Francisco and offering personalized, attentive service, reasonable fees. Advice and representation in residential and commercial tenancy matters—leases, notices, eviction, Rent Board petitions and hearings; drafting/enforcing contracts; formations of business entities—partnerships, limited liability companies, corporations. Free consultation. John R. Weinstein, Attorney-at-Law. Telephone 415/863-5896.

Bed and Breakfast Hosting: If you have an extra bedroom, with or without a private bath, that you would like to rent out on a nightly basis, let us know. Additional income—meet guests from all over the world. Phone: 415/899-0060, e-mail: reservations@bbsf.com, website: www.bbsf.com. Bed & Breakfast San Francisco—since 1977.

Bookkeeper: Professional service with over 20 years experience, specializing in small business, QuickBooks, Pro Advisor, A/P, A/R and payroll. Assistance with financial reporting, budgeting, audit controls and cash management. Visit www.alphaquickbooks.com or contact Liz at emckersie@comcast.net or 415/254-4600.

Driver: I CAN DRIVE YOU! Retired businessman can drive you to doctor appointments, grocery shopping or on other local errands. 10+ years experience with outstanding references. Friendly and dependable service. \$20 per hour with a 2-hr. minimum. (Out-of-San Francisco trips are negotiable.) Call Bill: 415/826-3613 or e-mail to: bill311@att.net.

Financial Services: Bookkeeping, payroll, budgeting, financial reports, cash management, QuickBooks setup, reconciliations, A/P, A/R and much more. 15 years experience in bookkeeping/accounting. All companies—big and small. schwartzconsulting@gmail.com.

Interior Design: Everyone is unique, and your home should reflect your individuality. Refreshing your interiors reduces stress in your life. At **ALMOST INSTANT INTERIORS** we create affordable, unique, inviting interiors often using deceptively simple solutions. For makeovers, color consultation, interior architecture and full service design, contact: 415/824-4440, almostinstant@gmail.com or visit www.almostinstantinteriors.BIZ.

Legal Services: Established San Francisco attorney emphasizing Wills and Trusts (including **LIVING TRUSTS** and irrevocable trusts) and representation of small businesses (formation of corporations and limited liability companies; drafting of confidentiality and trade secret agreements, buy-sell agreements; and copyright matters). Reasonable rates (set fees for trusts). Call 415/221-3000 for appointment. See www.thelawcounselor.com for info.

Music Lessons: David Manley Music Studio offers piano lessons, guitar lessons, and vocal coaching for beginners & intermediate students—at the studio or in your home. Located in the Cole Valley area. Free introductory session. For more information please visit my website at www.speakeasy.org/~dmanley Phone: 415/759-8324 e-mail: dmanley@speakeasy.net.

Nanny Services: Need superior child care? Looking for a small, quality company? Call Natural Nannies at 415/839-5310 to meet competent, well-trained, experienced nannies. Check out our website to learn more about us at www.naturalnannies.com. We are caring, creative and conscientious. Any questions? E-mail us at info@naturalnannies.com.

Orange Dog Manor: Cole Valley Vacation Rental is perfect for housing visiting grandparents or out-of-town friends. Fully furnished studio apartment includes kitchen and private bath. Special discount for weeklong rentals. Visit our website at www.orangedogmanor.com or call 415/753-6886.

Organize Your Home/Home Office/Finances: And feel calmed, inspired, productive. Working together we can bring your space, clutter, paper and/or finances to order. Member NAPO. Rates sensitive to economic times. Phone for no-obligation consultation, Linda James, at 415/285-3266.

Organizing/Relocating: Overwhelmed by clutter or relocating? As featured on KPIX and NPR, SHIPSHAPE has expertly helped overworked professionals, frazzled moms and harassed homeowners cut through clutter and restore simplicity and peace of mind to their busy lives. Homes, offices, closets, packing and more. Free phone consultation. Call 415/550-0658 or visit www.ShipShape.com.

Printing: We print business cards, office stationery and company brochures using the latest technology. Free consultations, easy e-mail prices and friendly service. Delivery right to you. Call or e-mail On The Mark for graphics, print and mailing services. References available. Call or e-mail: 415/621-2312 or Sam@printotm.com.

Proofreading: Lurilla has an English degree, a journalism background and was a member of the International Typographical Union for 40 years. She is an excellent proofreader (editing service also). Reasonable rates—unreasonable pickiness! First page free, then hourly rates apply. References available. Call 415/648-1868.

Real Estate: THINKING OF SELLING? - SAVE UP TO \$15,000.00 ON YOUR HOME, INCOME PROPERTY OR CONDO. A *San Francisco Magazine* Top Ten Realtor Bob Evans (Evjenth) 350+SOLD. Visit www.obeo.com/ca/bobevans or call for a SOLD LIST comparable to your property at 415/308-5902. License 702525 since 1978.

Real Estate: Welcome to the New Year! Are you STILL renting and missing out on low interest rates, mortgage interest deductions, the control of owning your own home? Check out the values offered just a bit north of the City. Sonoma County offers outstanding home values. See for yourself and stop renting today. I am dedicated to customer service and will get you the results you want. Visit www.getayard.com or www.marthaohayer.com. License #00923719.

Stereo Repair/Home Theater Installation: Gene's Sound Service offers expert component-level repair of home audio systems, as well as audio, video and home-theater installation and system troubleshooting. Specializing in on-site service at your home, office or shop. Convenient day, evening or Saturday appointments available. Many local references. Advice on maintaining your system gladly given. "Gene's honest and knows his stuff. Give him a try." Bobby McFerrin. Call Gene at 415/377-1258. More info at www.genessoundservice.com.

Tax Prep and Planning: Tax services for individuals and self-employed persons. Over 20 years experience, especially in dealing with issues of artists, consultants and nonfilers. Free initial phone consultation. Please contact Alan Steger, Enrolled Agent, at 415/387-3057.

Tax Services for Individuals and Self-Employed Persons: GRETCHEN BECK is an Enrolled Agent, licensed to represent clients before the IRS. Half-hour free consultation. Appointment only. 415/695-9811. wonderwoman2k@juno.com

Follow COLE HARDWARE!

facebook

twitter

E-Waste and Donation Drop-Off

Our Mission Street location will sponsor a donation drop-off day at our Mission Street store on Saturday, January 29, from 10:00 am to 2:00 pm with our friends at Goodwill.

We have expanded the list of what we can accept for donation. Besides consumer electronics, we will accept clothing and accessories, home accessories, kitchenware and small appliances, and bicycles. (Sorry, but we cannot accept large appliances, sofas, mattresses, snow skis, auto parts and furniture.) Goodwill will take almost anything



in good, clean, working condition. High-quality women's clothing and housewares are particularly needed and appreciated. As a guideline, if you would give it to a friend or hand it down to a relative, it is perfect for Goodwill.

Consumer electronics have unfortunately become practically disposable, so this is a great opportunity to dispose of outdated phones, computers, stereos and televisions properly and safely, so they stay out of our landfill.

Take advantage of this opportunity to clean house!

Saturday, January 29
Mission Street @ 29th
10:00 am–2:00 pm

COMMUNITY PARTNERS

DONATE TO YOUR CHOICE OF MORE THAN 500 SCHOOLS OR COMMUNITY GROUPS WHEN YOU SHOP AT OUR STORES!

Every year we give away over \$60,000 in goods and gift cards to our partner schools and nonprofit organizations in San Francisco. When checking out at our stores, customers mention their favorite school or group, and their transactions will then be posted to a special account for that group. A COLE HARDWARE gift card equal to 10% of all purchases credited to that account will be sent to the

group the following year.

We will donate (with three weeks' notice) Clearly COLE HARDWARE bottled water to an organization's fund-raising events to be sold or given away—whichever brings the most benefit. In addition, we'll donate a COLE HARDWARE gift card for silent auctions or raffles as a fund-raising tool.

Teachers and principals in the San Francisco school district may register with us to receive a discount on school supplies, and we will work with nonprofits on a case-by-case basis to receive a discount on community improvement projects.

Visit www.colehardware.com/partners for more information about a partnership with us.

SCHOOLS

A. P. Giannini Middle School (*76)
After-School Pursuits (*504)
Aim High School (21360)
Alamo School (*266)
Alice Fong Yu Alternative School (*1541)
Alvarado After-School (*503)
Alvarado Elementary School (*825)
Amer. College of Trad. Chinese Medicine (451)
Aptos Middle School (10594)
Argonne Elementary School (21299)
ASI Early Childhood Education Center (1660)
Before/After-School Immersion Care (*505)
Benchmark Institute (21216)
Brandeis Hillel Day School (*655)
Bret Harte Elementary (21344)
Buen Diam Nursery School (*88)
Buena Vista Alternative School (*24)
CS Children's School (455)
Cathedral School for Boys (*1275)
Cntr. for Learning in Retirement U.C. Ext. (425)
Chibi Chan Preschool (21325)
Children's Day School (*334)
Chinese American International School (150)
Chinese Immersion School at DeVila PTA (21352)
City College John Adams Campus (*1860)
City College Mission Campus (*67)
City College of S.F. Downtown Campus (21312)
Claire Lilienthal Elementary School (*33)
Clarendon Elementary School (*80)
Clarendon JBBP Auction (5008)
Clarendon 2nd Community Program (*5007)

Cleveland Elementary School (2455)
Commodore Sloat School PCO (51)
Cong. Sherith Israel Religious School (2266)
Convent & Stuart Hall (21249)
Creative Arts Charter School (*1515)
Daniel Webster Elementary (21383)
Dianne Feinstein School (21211)
Dr. Charles Drew School (*47)
Dr. Geo. Washington Carver Elementary (658)
Dr. William L. Cobb School (21263)
E. R. Taylor Elementary School (*423)
Edison Elementary School (*3531)
Enterprise for High School Students (21202)
Everett Middle School (21317)
Everyday Magic Child Devel. Center (2002)
Fairmount Elementary School (365)
Families of Sunset PTA (19204)
Francis Scott Key (21320)
Francisco Middle School (21242)
Frank McCoppin Child Devel. Center (*651)
French-American International School (*44)
Friends of Potrero Nursery Hill School (21240)
Friends of Saint Francis Childcare Center (500)
Galileo Academy PTSA (1110)
Gates and Bridges Preschool (282)
Gateway High School (2931)
George Peabody Elementary School (2516)
German School of San Francisco (2913)
Glenridge Coop. Nursery School (1113)
Grattan Child Development Center (21332)
Grattan Elementary School (*35)

Growth & Learning Opportunity (*500)
Haight Ashbury Psychological Services (21384) Haight-Ashbury Coop Nursery School (*22)
Hamlin School Parents Association (212)
Harvey Milk Civil Rights Academy (523)
Healthy Environments Daycare (*95)
Herbert Hoover Middle School (2290)
Horace Mann Middle School (*56)
Infant Development Center (*46)
Institute of Classical Homoeopathy (21306)
International Christian School (*42)
International Studies Academy (*693)
Iyengar Yoga Institute (*108)
James Denman Middle School (*75)
James Lick Middle School (*34)
Jewish Community H.S. of the Bay (1835)
John A. O'Connell H.S. of Technology (*1920)
Jose Ortega Elementary School (21347)
July Jordan School for Equity (21323)
The Junior League of San Francisco, Inc. (21314)
Katherine Michiels School (1335)
The Kid's Co-op Inc. (21264)
KIPP Bayview Academy (888)
KIPP San Francisco Bay Academy (902)
Lafayette School (2545)
Lakeshore Elementary School (424)
Lakeside Presbyterian Cntr. for Children (201)
Laurel Hill Nursery School (*40)
The Laurel School (*350)
Lawton Alternative School (*57)
Leadership High School (21255)

Leonard R. Flynn Elementary School (3128)
Lick Wilmerding Library (*755)
Little People's Workshop (*4166)
Live Oak School (*99)
Longfellow Elementary School (*7555)
Lowell High School (21278)
Lowell High School German Club (*92)
Lycee Français La Pérouse (1330)
Malcolm X Academy (21410)
Marilyn Reed Lucia Child Center (*610)
Marshall Elementary School (3575)
McKinley Elementary School (*1025)
Miraloma Elementary School PTA (2175)
Miraloma Nursery School (*85)
Mission Dolores School (21239)
Mission Graduates (*1661)
Mission High School (*3750)
Mission Learning Center (21343)
Mission Kids Co-op (21201)
Monroe Elementary School (*216)
Montessori Children's House (21204)
New Traditions Alternative School (*2049)
Nihonmachi Little Friends (*2031)
Noe Valley Nursery School (*55)
Oakes Children's Center (*1348)
One Fifty Parker Avenue School (91165)
Out of Site Center for Arts Education (302)
Pacific Primary School (*1500)
Parents for Public Schools (906)
Paul Revere Elementary School (*555)
Phoebe A. Hearst Preschool (*1315)

Playmates Coop. Nursery School (*2340)
Presidio Hill School (*77)
Presidio Middle School (21259)
Raoul Wallenberg High School (*43)
Redding Elementary School (21215)
Rocky Mountain Nursery School (*58)
Rooftop Alternative School (*68)
Roosevelt Middle School (*460)
Rosa Parks Elementary School (21213)
Sacred Heart Cathedral Preparatory (1055)
Saint Anne's School (21251)
Saint Anthony Immaculate Conception (399)
Saint Brendan School (21253)
Saint Brigid School (3256)
Saint Cecilia School (*660)
Saint Dominic School (*2445)
Saint Elizabeth School (21266)
Saint Finn Barr School (415)
Saint Gabriel School (355)
St. Ignatius College Preparatory (21241)
Saint James' Preschool (21261)
Saint James School (521)
Saint John Elementary School (9259)
St. Mary's Chinese Day School (21238)
St. Monica School (21322) Saint Paul's Elementary School (*180)
Saint Paul's Littlest Angel Pre-School (*221)
Saint Philip School (6665)
Saint Thomas More School Parents' Club (900)
San Francisco Community School (325)
San Francisco Day School (3509)

San Francisco Educational Services (*66)
San Francisco Friends School (8503)
San Francisco Jr. Adventist Academy (*48)
San Francisco School (*300)
San Francisco School of Circus Arts (*55)
School for Integrated Academics and Technologies SIATECH-- (21313)
School of the Arts High School (*45)
2nd Community Prog. at Clarendon (*8500)
Sherman Elementary School (1654)
South San Francisco High School (40094)
Star of the Sea School (21319)
Stepping Stones Preschool (329)
Sterne School (2690)
Stuart Hall High School (*1715)
Sunnyside ES School (6550)
Sunset Cooperative Nursery School (*4245)
Sunset Elementary (21395)
Sutro Elementary School (1235)
Synergy School (*91)
Tamalpais-Strawberry Preschools, Inc. (1009)
Thurgood Marshall Academic High School (21316)
Tule Elk Park Child Development (21315)
Urban School (*1563)
Wah Mei School (889)
Waldorf School (*999)
Washington High School (2291)
West Portal Parents Club (*5941)
Yick Wo School PTO (*2245)

COMMUNITY GROUPS

7th Avenue Senior Center (21289)
30th Street Senior Center (21296)
Accion Latina (21304)
AcroSports (*639)
ADDIS Light (21386)
AIDS Benefits Counselors (*470)
AIDS Emergency Fund (*1540)
AIDS Housing Alliance of S.F. (*427)
AIDS Legal Referral Panel (*114)
AIDS Memorial Grove (*8560)
AIDS Walk San Francisco (1939)
Alexander Hamilton Post 448 (411)
Altered Barbie (21425)
American Cancer Society (21237)
American Youth Hostels (*426)
AORN (21409)
Arab Cultural & Community Center (21350)
The Arc San Francisco (3355)
Arriba Juntos (21367)
Art of the Matter (3288)
Arts Expression Society (21267)
ArtSpan (934)
Asian Neighborhood Design (21212)
Asian/Pacific Islander Am. Health Forum (450)
Asian/Pacific Islander Legal Outreach (21287)
Asian/Pacific Islander Wellness Center (*786)
Asian Women's Shelter (21393)
At the Crossroads (21371)
Auxiliary of Little Sisters (892)
Balboa Alumni Association (*1100)
Bay Area Attachment Parenting (211)
Bay Area Rainbow Symphony (21338)
Bay Area Ridge Trail Council
Bay Area Wilderness Training (302)
Bay Area Young Survivors (21282)
Bay Area Youth Fund for Education (29415)
Bazaar Bizarre San Francisco (21359)
Bernal Hgts. Neighborhood Center (*515)
BCOA: Black Coalition on AIDS (504)
Big Brothers Big Sisters of the Bay Area (887)
The Big Rumble (21394)
Black Rock Arts Foundation (1900)
Blind Babies Foundation (5016)
Booker T. Washington Community Center (21398)
Breast Cancer Emergency Fund (21331)
Breast Cancer Fund (21405)
Buddhist Church of San Francisco (21346)
California Jug Band Association (21293)
California Native Plant Society (*1424)
California Reinvestment Coalition (21329)
California Revels (*337)
CAL-PEP (510)
Cameron House (21208)
Castro Lions Club (*2584)
Central American Resource Center (21362)
Centro Latino de San Francisco (*1656)
Children of Lesbians/Gays Everywhere (400)
Children's Book Project (*455)
Children's Brain Disease (21219)
Children's Council of San Francisco (*123)
Chinatown Community Development Center (21257)

Chinese Historical Society of America (21291)
Círculo de Vida (21399)
City Car Share (21284)
Clinic By the Bay (21402)
Cole Valley Imporvement Association (21369)
Coleman Advocates for Children/Youth (*2602)
Community Board Program (*1542)
Community Educational Services (21223)
Community Housing Partnership (935)
Community Living Campaign (21404)
AIDS Walk San Francisco (1939)
Company Chaddick (656)
Compass Community Services (9995)
Conard House (*149)
Congregation Beth Israel Judea (21400)
Congregation Beth Shalom (*130)
Congregation Sha'ar Zahaz (*1290)
Conservatory of Flowers (21401)
Crohn's & Colitis Foundation of America (21233)
CUESA (21418)
Cultural Integration Fellowship (8502)
Curry Senior Center [formerly North of Market Senior Services - acct 333] (21235)
Daily Acts (21224)
Department of Environment (21365)
Discovery Community, Inc. (21229)
Dolores Street Community Services (*938)
Dream House (*1601)
Embarcadero YMCA (2169)
Energy Service Corp (21423)
Family House (502)
Family Link (*317)
Family Service Agency of San Francisco (331)
First 5 California (21270)
First Unitarian Universalist Society of SF (21256)
Florence Crittenton Services of S.F. (*291)
Flowers Heritage Foundation (21375)
Fort Mason Community Garden (21279)
Friends of Camp Mather (21368)
Friends of San Francisco City Planning (21205)
Friends of Sharon Art Studio (*1033)
Friends of the S.F. Public Library (*14)
Friends of the Urban Forest (1070)
Friends of Walter Haas Park (140)
Gamelan Sekar Jaya (6485)
The Garden Conservancy (21302)
Garden for the Environment (780)
Gay and Lesbian Medical Assn. (*211)
Gay Asian Pacific Alliance (21311)
Gay/Lesbian All. Against Defamation (*1360)
General Assistance Advocacy Project (278)
Give Me Shelter Cat Rescue (885)
Glen Park Festival (21318)
Global Autism Project (21415)
Global Services Corps (21376)
Grattan Child Development Center (21332)
Great Gorilla Run (21217)
Groceries for Seniors (21307)
Groundworks Opportunities (21392)
Habitat for Humanity (*4319)
Haight Ashbury Food Program (*1525)




Haight Ashbury Free Medical Clinic (*333)
Haight Ashbury Improvement Assn. (890)
HANC Recycling Center (*780)
Hands on Bay Area (661)
Health Champions (7999)
Hearing and Speech Center of No. Cal. (21200)
HIV Care (*9000)
Holy Family Day Home (299)
Home Away from Homelessness (903)
Homeless Prenatal Program (995)
H.O.M.E.Y. (21286)
Horses in California, Inc. (21228)
Huck Cancer Ultimate Frisbee Tournament (21373)
Huckleberry Youth Programs (279)
The Imagine Bus Project (21420)
Congredent Arts & Media (21364)
Independent Living Resource Cntr. of S.F. (649)
Insight Meditation Community of S.F. (4755)
International Dyslexia Association (21254)
Intersection for the Arts (446)
Jack and Jill of America, Inc., San Francisco (21349)
Janet Pomeroy Center (21225)
Japanese Community Youth Council (21406)
Jewish Family/Children Services (*1600)
Jewish Healing Center (3530)
Jon Sims Center (1519)
Jones Memorial United Methodist Church (21280)
Jesus's Place for Bereaved Youth and Families (21308)
The Junior League of San Francisco (21314)
Kid Stock, Inc. (21214)
Kids in Parks (886)
KUSF 90.3 FM (21309)
La Casa de las Madres (833)
The LAB (the-art-re-grüp, inc.) (2949)
Lamplighters Music Theater (21428)
Larkin Street Youth Services (2506)
Leadership High School (21255)
Leap (21218)
Legal Services for Children (21417)
Legal Services for Prisoners with Children (21303)
Lesbian/Gay Chorus of San Francisco (*151)
Lesbians in the Visual Arts (870)
Leukemia/Lymphoma Soc. Team Training (1390)
Liberty Numismatic Society (*813)
Lincoln Child Center (*4368)
LINES Dance Center (21424)
Literacy for Environmental Justice (21269)
Little Brothers - Friends of the Elderly (909)
Love Every Animal (21403)
Lyon Martin Women's Health Services (1748)
Lyric-Lavender Youth Rec.& Info. Center (*127)
Maitri (*61)
Make-A-Wish Foundation (*785)
Mama Hope (21410)
Manilatown Heritage Foundation (21262)
Market Street Railway (*870)
The Mary Elizabeth Inn (21374)
Meals on Wheels of San Francisco, Inc. (2375)
Mental Health Association of S.F. (871)
Mercy Housing (111)
Metropolitan Community Church of S.F. (155)

Middle Polk Neighborhood (21305)
Milestones Human Services (*594)
A Miner Miracle (414)
Mission Economic Development Agency (21300)
Mission Neighborhood Center (362)
Most Holy Redeemer AIDS Group (432)
Mothers Organizing Mothers (*69)
Mujeres Unidas Y Activas (21416)
Museum of Craft & Folk Art (21427)
Museum of Performance & Design (21377)
National Alliance for the Mentally III (5214)
National Marfan Foundation (5829)
National Multiple Sclerosis Society (21351)
Native American AIDS Project (21413)
Nature in the City (21234)
Neighborhood Parks Council (783)
Network for Elders (657)
New Door Ventures (*1387)
New Leaf Services (1854)
New Music Bay Area (21380)
Next Arts (21231)
Noe Valley Chamber Music (21206)
North & South of Market—Adult Day Heath (21285)
No. of Panhandle Neighborhood Assn. (*591)
Northern California Community Loan Fund (21244)
Nor California Supplier Development Council (21260)
NorthWest Bernal Alliance (3181)
Notre Dame des Victoires (5669)
Older Women's League (OWL) (392)
OMI/Excelsior Beacon Center (241)
Other Minds (*267)
Our Family Coalition (21366)
Pacific Asian American Women Bay Area Coalition (PAAWBAC) (21391)
Pacific Rowing Club (21408)
PACT—Plan of Action for Challenging Times (21330)
Page Street Center (21227)
Paradigm Programs (*14061)
Parent's Place (*1602)
Pathways for Kids (33194)
PAWS (539)
Peninsula Temple Beth El (21225)
People Organized to Win Employment Rights [POWER] (21353)
People with AIDS Coalition of S.F. (*2341)
Pets Unlimited (2343)
Philipino Senior Resource Center (21429)
Planet Drum Foundation (*312)
Planning for Elders in Central City (1371)
Plant*SF (21230)
Playworks (21370)
Positive Resource (*1675)
Precita Eyes Mural Art Center (*348)
Precita Valley Center (21294)
Princess Project (21390)
Project Homeless Connect (21335)
Project Inform (*1965)
Project Night Night (21412)
Project Open Hand (730)
Public Glass (1750)
Public Interest Clearinghouse (21222)

Purple Moon Dance Project (*3543)
Quan Yin Healing Arts Center (*1748)
Randall Museum Friends (199)
Rebirth and Development, Inc. (5145)
Rebuilding Together San Francisco (328)
Richmond District Neighborhood Center (21268)
Richmond District YMCA (21396)
Rockwood Leadership Program (2649)
Ronald McDonald House of S.F. (1640)
Rose Resnick Lighthouse for the Blind (*214)
Rotary Club of Fisherman's Wharf (21382)
RSVP San Francisco (21328)
Russian Hill Neighbors (1822)
Sacred Heart Cathedral Preparatory (21295)
SAGE Project (901)
Saint Anthony Foundation (8500)
Saint Francis Foundation (21342)
Saint Francis Living Room Project Foundation, Inc. (21414)
Saint Luke's Hospital Foundation (*3555)
Saint Vincent De Paul Society (28050)
Sts. Peter & Paul Church and School (6609)
San Francisco Animal Care and Control (1201)
San Francisco Architectural Heritage (21265)
San Francisco Arts Education Project (136)
San Francisco Bay Area Book Council (*125)
San Francisco Beautiful (141)
San Francisco Bicycle Coalition (21220)
San Francisco CASA (833)
San Francisco Children's Art Center (*1231)
San Francisco Circus Center (21340)
San Francisco Conservation Corps (*102)
S.F. Depressive/Manic Depressive Assn. (*900)
San Francisco Dyke March (21288)
San Francisco Education Fund (21378)
San Francisco Experience Corps (3930)
San Francisco Food Bank (*901)
San Francisco Frontrunners (891)
San Francisco Generations, Inc (21341)
S.F. General Hospital Foundation (*89)
San Francisco Hep B Free (21419)
S.F. Lesbian/Gay Freedom Band (585)
People Organized to Win Employment Rights (*2521)
San Francisco Lyric Chorus (21321)
S.F. Merionettes (21422)
San Francisco Museum of Craft & Design (21210)
San Francisco Organizing Project (21250)
San Francisco Parks Trust (5011)
S.F. Planning & Urban Research (21301)
San Francisco Prime Timers (42674)
S.F. Recreation and Park Department (21248)
San Francisco Senior Center (21207)
San Francisco Shakespeare Festival (662)
San Francisco SPCA (2503)
San Francisco Suicide Prevention (*1913)
S.F. Urban (21397)
San Francisco Urban Service Project (*1406)
San Francisco Vikings Soccer Club, Inc. (2521)
San Francisco Women Against Rape (3543)
S.F. Women's Rehabilitation Found, Inc. (21232)
San Francisco's Promise (501)

Save Japan Dolphins (21388)
SaveNature.org (21203)
Scottish Rite Language Center (21246)
SFGRO (1705)
ShadowLight Productions (*223)
Shalom Bayit Bay Area Jewish Women Working to End Domestic Violence (10102)
Shanti (*1546)
Shih Yu-Lang Central YMCA (234)
Shippard Artists (884)
Slow Food Nation (21292)
SoMa Community Action Network (965)
Southern Exposure (21274)
SPARK Program (21426)
Spinsters of San Francisco (21363)
Starr King Openspace (21385)
The Stepping Stone (21387)
Stop AIDS Project (*301)
Streetside Stories (209)
Sunrise Community Pantry (21324)
Sunset Neighborhood Beacon Center (21275)
Sunset Youth Services (391)
Support for Families of Children w/Disabilities (*2601)
Swords to Plowshares (16569)
Talkline (*1757)
Tea Party (21421)
Tenderloin Health (*241)
Tenderloin Bicycle Coalition (21283)
Tenderloin Neighborhood Development (21389)
Tesoro (21221)
TFW Children's Fund (21348)
Twin Peaks Improvement Assn. (*31002)
UCSF Medical Center Auxiliary (21361)
Under One Roof (21243)
UNIFEM (21381)
United Cerebral Palsy of San Francisco (*627)
United Irish Cultural Center, Inc. (21379)
Up On Top After School Program (1187)
Upwardly Global (21372)
Urban Services YMCA of San Francisco (21273)
Urban Solutions (21258)
Victory Outreach San Francisco (21345)
Vietnamese Youth Development Center (21407)
Villa Sinfonia Foundation (21247)
Visitation Valley Community Center (*50)
Visual Aid, Artists for AIDS Relief (*720)
Walden House (520)
Wallenberg Community Found (21245)
Woman, Inc. (*1537)
Women's Cancer Resource Center (3023)
Women's Community Clinic (21252)
World Bridges (1205)
Wu Yee Children's Services (21277)
Youth Life San Francisco (5222)
Zeum (*111)
Zoo II (21276)

The COLE HARDWARE Calendar - January

SUNDAY	MONDAY	TUESDAY	WEDNESDAY	THURSDAY	FRIDAY	SATURDAY
						1 New Year's Day
2	3	 dollar days January HOT DEALS January 1-16 see insert!			7	8
9	10	11	12	13	14	15
16	17  Martin Luther King Jr. Day	18	19	20  COMMUNITY SAVINGS DAYS Special Community Members SAVE 20% see page 13 for more details		22
23	24	25 Teacher Tuesday	26 Senior Wednesday	27 Military Thursday	28	29 E-Waste and Donation Drop-Off! at Mission St. Store 10 am-2 pm
30	31 Student Monday					



**Our founder Dave Karp,
Purveyor of Hardware Wisdom**

The COLE HARDWARE credo...

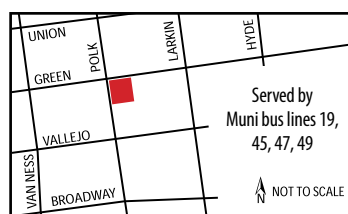
Commitment to savings:
Rewards program members receive a 5% annual dividend on purchases.

Commitment to the community:
We donate 10% of what you spend to local charities (you get to designate one of our school or community partner beneficiaries; see page 15).

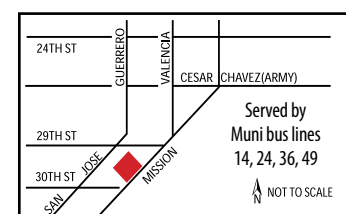
Commitment to you: Over 80 years of guaranteed customer satisfaction.

Commitment to the environment:
Reducing our footprints by implementing environmentally sound practices in our stores.

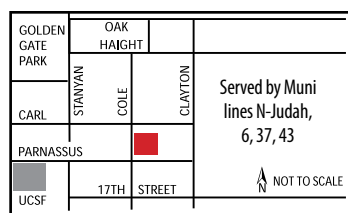
Four locations serving you every single day of the year!



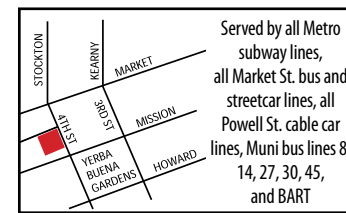
COLE HARDWARE
2254 Polk Street
San Francisco, CA 94109-1820
(at Green Street on Russian Hill)
415/674-8913 Fax: 674-8917
Weekdays 8:00 am-8:00 pm
Weekends 9:00 am-7:00 pm
OPEN NEW YEAR'S DAY 9:00 am-5:30 pm



COLE HARDWARE
3312 Mission Street
San Francisco, CA 94110-5009
(at 29th Street—near Safeway)
415/647-8700 Fax: 647-6554
Weekdays 7:00 am-7:30 pm
Weekends 8:00 am-7:00 pm
OPEN NEW YEAR'S DAY 9:00 am-5:30 pm



COLE HARDWARE
956 Cole Street
San Francisco, CA 94117-4316
(at Parnassus—near U.C. Medical Center)
415/753-2653 Fax: 753-0957
Weekdays 7:00 am-7:30 pm
Weekends 8:00 am-7:00 pm
OPEN NEW YEAR'S DAY 9:00 am-5:30 pm



COLE FOX HARDWARE
70 4th Street
San Francisco, CA 94103-3124
(downtown bet. Market and Mission)
415/777-4400 Fax: 777-4453
Weekdays 8:00 am-7:30 pm
Weekends 9:00 am-5:30 pm
CLOSED NEW YEAR'S DAY

COLE HARDWARE reserves the right to limit quantities to stock on hand and to correct printed errors. Items are similar if not identical to printed illustrations. If an item is out of stock, we can offer a suitable replacement or a "rain check" for the advertised item. We strive for complete customer satisfaction.

Contact the **Hardware Hotline** at 415/753-2653 ext. 5 or e-mail hotline@colehardware.com.



web: www.colehardware.com
Contractor's License #708403
service@colehardware.com

E-mail us with any comments or questions at hotline@colehardware.com.

© COLE HARDWARE 2011. The *Hardware Hotline* is printed on paper with 55% post-consumer product using soy inks by Folger Graphics, Inc., a Green Business Printer.

January 2011