



Star Spangled Savings
July 2-5
see insert for details

Sale



Enter to Win
Tickets to
The Fantasticks
THE **SF PLAYHOUSE**
see page 10 for details



E-Waste Drop-Off
Saturday
July 31
Mission St. Store
see page 10 for details



COLE HARDWARE[®]'s
Hardware Hotline
July 2010

 **Benjamin Moore**
Paints

NEWS AND VIEWS FROM AROUND THE STORES

 **SAN FRANCISCO GREEN BUSINESS**

Meet Our Hard-Core Hardware Ladies and Gents

At COLE HARDWARE we are extremely proud of our fantastic staff. We are a diverse mix of wonderfully friendly and helpful people, all



Gertie and Danny, Polk Street store

totally dedicated to serving you. We are young and not-so-old, some just beginning careers in hardware. But many have been around hardware for years—nearly all of their working lives. They have lived and breathed it: hardware oozes from

continued on page 3...

Colehardware.com Gets a Facelift!

Check out www.colehardware.com and let us know what you think of the updated look and feel of our website. While we update our website regularly, it has been ages since we have addressed design and navigation issues.

We're finding that the website is a constant work in progress, and we aren't 100% complete, but it's close enough to allow us to go public and get your feedback.

Our website still features all of the valuable and useful information it always has, but in a much more user-friendly format, we think. We've added some features, such as our current monthly calendar and complete product catalog for our Commercial Supply customers. Other

sections, such as Recycling Resources, were updated with current information. We're very pleased with our new website and hope you are, too! Let us know what you think at rick@colehardware.com.



"Our commitment to you: Your satisfaction guaranteed. Period."

3312 Mission Street
San Francisco, CA 94110-5009

PRSRT STD
U.S. POSTAGE PAID
SAN FRANCISCO, CA
PERMIT #3137

TIME SENSITIVE MATERIAL





We Think She'll Know!

Q: Does it really make much of a difference what kind of paint brush I use on painting projects?

A: Yes! Choosing the right brush is just as important as selecting the color of paint for your project.

You may be tempted to "make do" with a less-expensive brush, but the difference in price between an inferior brush and a good-quality one is far outweighed by the ease of application and superior results. Furthermore, you'll save money in the long run with a brush that can withstand project after project.

The type of paint used will dictate the best brush for the job. Paint brush bristles (fibers) fall into two general categories: natural bristles and synthetic bristles.

Natural-bristle brushes should be used only with oil-based (solvent) products. Do not use natural-bristle brushes with latex (water-based) paint. Natural bristles absorb the water in latex paint and soften—causing the finish coat of paint to have streaks or other noticeable defects.

Synthetic-bristle brushes are made from human-made materials such as polyester or nylon and are excellent for latex and other water-based products because they hold their shape and resiliency. They are also easy to clean, and their filament will not soften and become limp. They can also be used for oil-based paints.

Use the Right Size Brush

Using the right size brush will save you time and effort and give you far better results. One-inch brushes are made for trim, shutters and most touch-up. Four-inch brushes are designed for painting larger surface areas, such as interior walls, paneling, exterior siding, and so on. A project with sharp angles or other unusual surfaces may require an angular brush. Long handles on trim and sash brushes make it easy to reach into hard-to-get places and are good for "cutting in."

Purdy® Paint Brushes

I recommend the Purdy line of paint brushes for do-it-yourselfers, and many professional painters use only this brand. Purdy products are high-quality paint brushes that are handmade in the United States. Cole Hardware carries

and assortment of sizes and types ranging in prices from \$9.99 to \$27.99.

The **PurdyXL™** series brushes are a unique blend of nylon and polyester filaments, recommended for both interior and exterior projects, and they work well with all paints. The hand-chiseled finish assures a smooth "no drag" application.

The **Purdy Elite™** series brushes are made from polyester filaments, and each brush is hand-chiseled for easier cutting in. The Elite brushes are highly recommended for the high-solid, low-V.O.C. paints, such as Benjamin Moore's Aura® and Natura®.

The **Purdy Adjutant™** series brushes are 100% natural white China bristle. Softer and more supple, these brushes are particularly effective with oil-based paints, stains, varnishes and polyurethanes. They are great for providing a smooth finish on furniture, antiques or wherever a smooth finish is desired.

Got a business-related question for Alice? Simply e-mail askalice@colehardware.com and look for the answer in the next installment of Ask Alice!



Aura® Waterborne Exterior Paint Now Available at COLE HARDWARE!

COLE HARDWARE is pleased to add Aura Waterborne Exterior Paint to our assortment of Benjamin Moore paints. Aura exterior paint has one of the lowest V.O.C. levels of any paint currently on the market and meets the most stringent environmental regulations in North America, providing unequaled performance, environmental safeguards and low odor in one innovative product.

Proprietary Color Lock® technology gives Aura paint a superior one-coat performance, like applying two coats of conventional paint. Aura paint dries faster

and delivers a smooth, durable finish that you will enjoy year after year. The high-build properties allow for more coating flexibility, so the paint easily flows, filling in minor crevices and covering surface imperfections.

Add some curb appeal to your home with Aura exterior paints! Assorted finishes. Quart \$20.99; Gallon \$59.99.



Dave Karp celebrates his 94th birthday visiting all of the COLE HARDWARE locations.

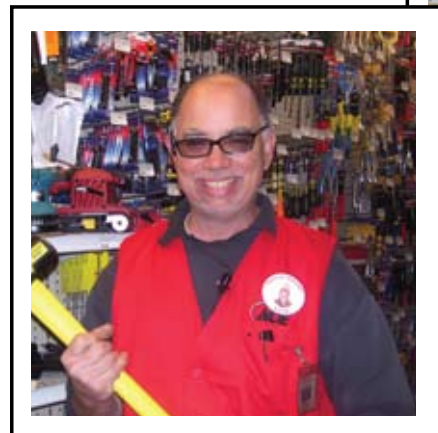
Dave Celebrates His 94th Birthday!

Thank you to all our loyal shoppers who stopped in to see Dave and make his day even more special!

Meet Our Hard-Core Hardware Ladies and Gents

...continued from page 1
their souls.

It is these folks who truly make a hardware store great. They can speak thread count (on bolts, not bed sheets), paint coverage, gas and water, tumblers and pins, lumber, deep canopies, bastard files, voltage and watts, mollies, suction, pesticide, lubricants, filters, flow ... indeed, they are hardware multilingual. Stan at Mission: plumber extraordinaire. Esther at Cole: owned her own hardware store. Ditto Gertie at Polk. Wayne at Mission: locksmith, owned hardware stores, Vespa restoration specialist and more. Joseph at Cole Fox: well, he knows everything and can



Rene, Cole Street store

build or fix anything. You get the picture. These folks are truly special, the foundation of our business, our product knowledge experts. Meet our hard-core hardware ladies and gents.

Cole Street

Rene: Longtime Cole Street shoppers know Rene, a friendly fixture since 1989! Rene's specialty is talking people through repairs that they think they have no clue on how to accomplish. Even if it means taking things out of the packaging to give them a visual, Rene enjoys seeing them "get it."

Esther: Along with her husband, Walter, Esther owned a hardware store in the City for almost 15 years.



Yuri, Cole Street store

about every other department.

Mike: With a hardware following of professional contractors and maintenance crews a rock star would envy, Mike is an expert at do-it-yourself projects, having restored several Victorians himself. Also, Mike is a valuable resource for hard-to-find items. He can assist in German also!

Yuri: Our most multilingual staff member, Yuri speaks Russian, Polish and Ukrainian, in addition to English. Yuri's 20-year plumbing background and 20 years in hardware retail make him a plumbing, electrical and hardware expert.

Polk Street

Danny: For almost 15 years, Danny and his family owned a hardware store in the City, making him knowledgeable in all aspects of hardware and helpful to all!

Gertie: In her native South Africa, Gertie owned a hardware store for over 20 years, then worked in another for 5 years. With a fun and outgoing personality, she loves helping customers with their plumbing, hardware and paint needs.



Stan, Mission Street store

Mission Street

Stan: With a background in heating, air conditioning and refrigeration, Stan has been with us since 2004 and is the go-to guy for all of your electrical and plumbing questions when shopping at our Mission Street store!

Wayne: Having been a hardware store owner and a locksmith, Wayne can

assist in just about any area.

Cole Fox

Joseph: One of our inherited treasures when we purchased the Fox location, Joseph has helped customers downtown for close to 20 years! He runs the tool department, which make sense since he knows how to use each and every tool and can build just about anything! All the cabinets in the store were built by the amazing Joseph!

Bill: Our resident downtown locksmith,

Bill has over 20 years of experience in the locksmith field to assist you with any key, lock or safe issues for both commercial and residential customers.



Bill, Cole Fox store



Joseph, Cole Fox store



Esther and Mike, Cole Street store

SIDEWALK SALES

Sunday, July 11
at Mission St. store

Saturday, July 17
at Cole St. store

Saturday, July 21
at Cole Fox

Tuesday, July 24
at Polk St. store

WHAT'S UNIQUE?



Scratch Doctor™

If you are a car owner in the City, you know that scratches to your car's surface are, unfortunately, a common part of living in the City. The Scratch Doctor can fix that. Besides removing surface scratches, the Scratch Doctor can also remove bugs, tar and oxidation. (Sku 8194060, \$10.99)



Gimlets

No—not vodka gimlets. And not those silly gimbles you deal with while cooking your turkey on Thanksgiving. These gimlets are a simple hand tool for drilling small holes and a favorite tool of our crew member Felicia. If you don't wish to invest in a power tool to drill a hole, gimlets are ideal, allowing you to essentially drill a hole simply by hand. The set that we offer contains gimlets to make 3, 4, 5, and 6 millimeter holes. (Sku 2149961, \$12.99)

iTouch Microfiber Spa Rugs

Microfiber is tough, yet soft to the touch. It is used in many cleaning products because it holds its shape and can absorb oils without scratching. Because microfiber can hold up to seven times its weight in water, it has become more common in household products, especially in cleaning applications. The new iTouch spa rugs from interDesign® feature microfiber. More absorbent than cotton rugs, these rugs feature a nonskid backing and measure 34" x 21". They're perfect for stepping out of the shower onto and are available in both white and linen. (Skus 6151690, 682029, **HOT DEAL \$19.99** Regular price \$24.99)

COLE HARDWARE Goes to the Movies! Sex and the City 2

If you've seen the newest *Sex and the City* sequel movie, you might have noticed in one scene that the Charlotte character and her daughter wear the beautiful and very fashionable Audrey™ aprons from Jessie Steele. Stylish and functional—these aprons are both! Don't we all have memories of our moms wearing aprons? Share the cooking experience, as you teach good eating habits. Available in assorted styles and patterns. (Sku 698011, \$29.99)



Ironman 2

Maybe you're more the action-adventure type of moviegoer. Did you notice what water bottle the hero drinks from? Yes, it is the sleek Kor® water bottle available at your local COLE HARDWARE. We can't guarantee any superhuman abilities, unfortunately, but drinking water is supposedly good for you! Ironman favors the blue tone, but the bottle also comes in pink, orange and green. (Skus 871099–102, **HOT DEAL \$19.99** Regular price \$29.99)



Join the Club!



FREQUENT SHOPPERS CLUB BENEFITS:

- You receive a 5% dividend on your yearly purchases (as a gift card good at any of our stores).
- No cost to join.
- We don't sell our customer list to anyone.
- Attach your Frequent Shoppers Club key tag to your key ring—if you lose your keys, they'll come to us in the mail!
- Lifetime warranty on most products bought from us (limitations may apply).
- Free delivery within San Francisco on weekends (if we must attempt delivery twice, a \$10 "second attempt" charge will apply).
- You receive the *Hardware Hotline*.*
- Fax documents and send UPS packages from our stores (limitations apply).
- Receive special offers and discounts available only to Frequent Shoppers.
- Come in on your birthday, show your I.D. and get a discount amounting to a percentage of half your age (see page 13 for details).

It's easy to join! Drop by any of our four stores and fill out a short application. Our computer will immediately begin tracking your purchases for your yearly dividend. Or sign up online at www.colehardware.com/frequent.

*You will receive our newsletter, the *Hardware Hotline*, every month for a year after you join and continue to receive it if you spend at least \$35 per 12-month period in our stores, or inform us that you wish to receive it. Otherwise, you can pick up a free copy at any of our four San Francisco locations.

FROM THE GARDEN CENTER

VISIT OUR GARDEN CENTERS AT COLE AND POLK STREET STORES AND EL JARDIN AT MISSION STREET



In the Garden with Rick July Garden Tasks

Although we had late season rains, we should be well into dry season by now. Don't let your garden dry out. Watering early in the morning is ideal. Evening watering is preferable to watering in the heat of the day, but it can promote disease. Weeds steal valuable water, so make sure to keep them under control.

✓ **Plant Herbs:** In a sunny area of your garden, plant culinary herbs such as cilantro, dill, rosemary, thyme, parsley, mint and chives.



✓ **Fertilize:** Annuals, perennials and trees will all enjoy a boost of nitrogen. Use an all-purpose fertilizer. After azaleas, camellias and rhododendrons have finished blooming, use an acid-loving plant food on these.



✓ **Tomatoes:** On a sunny windowsill, tomato seeds can still be started indoors. If your outdoor tomato plants have purpling or yellowing, this probably indicates a nutritional deficiency, and only then should they be fertilized. Irregular watering during a heat wave (should we be so fortunate) can cause rapid growth, but it is not good on the fruit.



✓ **Vegetables:** Plant a second crop of vegetables now: beets, bush beans, carrots, radishes, cabbage, cauliflower, fava beans and turnips. Harvesting your vegetables while they are young and on a regular basis will keep them productively fruiting. Harvest early in the day.



✓ **Butterfly-Loving Plants:** To attract butterflies to your garden, it is essential to plant nectar-producing flowers for them to feed on. Consider these plants:



- Herbs: Catnip, lavender, thyme, dill, sage and parsley
- Vegetables: Broccoli, kale and cabbage
- Flowers: Goldenrod, milkweed, sunset marigolds, cosmos, Mexican sunflowers and phlox

✓ **Add Color:** Now is the time to plant summer flowering perennials, shrubs and annuals. Marigolds, petunias, salvia,



fuchsias and begonias should all do the trick to make your garden bright and colorful.

✓ **Aphids:** Combat aphids with a strong spray from the hose, with ladybugs or with Safer® Insecticidal Soap. (Sku 74805, \$8.49) Release ladybugs in the evening at the base of the plant. If released during daytime, the ladybugs will fly away. As the ladybugs crawl up the plant, they will feast on the aphids.



✓ **Moisture Meters:** Watering properly is important—both to not waste water and to assure plants are getting what they need. If you aren't sure if your garden is getting the right amount of water, invest in a moisture meter, so you can water only when necessary. (Sku 7011638, \$7.49)

✓ **DriWater®:** If you are vacationing this month and don't have a reliable person to water your garden or houseplants, DriWater is what you need. DriWater is a patented product that consists of 98% purified water and 2% food-grade ingredients. It is bound in the form of a gel-like solid that provides consistent subsurface irrigation to plants for up to three months. DriWater is *not* a polymer or a wetting agent, and it's organic and completely nontoxic. (Quart: Sku 707015, \$2.99; Time-Release Tube and Gel Pac: Sku 70716, \$4.99; Gel Pac: 707020, \$2.99)

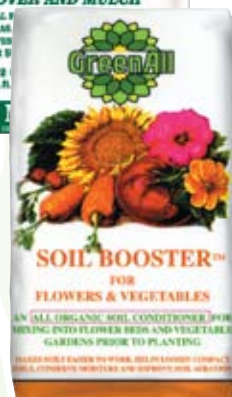


See you in the garden!



E.B. Stone™ Organics

In 1916, E. B. Stone created a fertilizer that made his fruit crops the talk of other San



Jose farmers. In time, he created superb fertilizers as well as soil conditioners for flowers, fruit trees and plant material of many varieties. When he retired in 1979, he sold his family business to the Crandalls, another family dedicated to creating the best fertilizer and amendments. Through the years, horticulturists at E.B. Stone perfected some of those original formulas.

The result is a new generation of 21st century fertilizers, soils for indoor use, all-natural pest controls, and soil amendments for the garden and landscape. The proof of their efforts is when you see what happens in your own garden with our E.B. Stone Organics products.

Our garden centers now offer a variety of E.B. Stone plant foods and fertilizers. Specialty plant foods include: Tree & Shrub, Rose & Flower, Azalea, Camellia & Gardenia, Citrus & Fruit Trees, Tomato & Vegetable. A soil booster, alfalfa meal and iron sulfate fertilizer are also offered in the line. Prices range from \$3.99 to \$16.99.



Painting Your Victorian for Curb Appeal

If your home was built between the end of 18th and the beginning of 19th centuries, chances are you live in some form of Victorian architecture. San Francisco is well known for its Victorian architecture, where majestic structures populate many City neighborhoods.

Indeed, the "Painted Ladies" of San Francisco are known worldwide for their vibrant and sometimes even psychedelic tones. In Victorian



times, more natural earth-tone shades of brown, red, mustard and green would mostly have been used. Whatever the color scheme you may choose, a lot of careful consideration will likely be

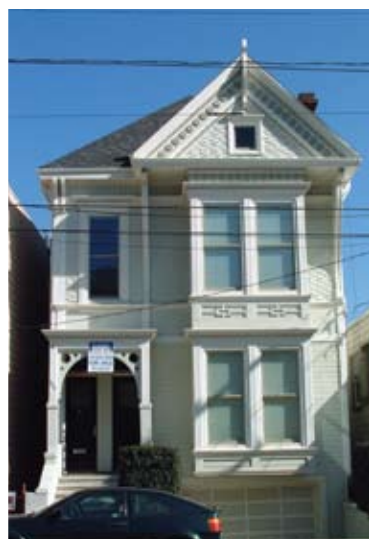
required before even a single gallon of paint is opened.

Whether you own a fanciful Queen Anne Victorian or a more restrained Edwardian, you may already know that these old buildings require considerable effort to maintain. It's not only because of their age, but also because the very things that make this type of architecture so beautiful also make it more fragile and susceptible to the elements: the fine wood detailing, extensive trim work, brackets and bays—all those angles and corners for water to get into and for the rain and the sun to beat on.

It is very common to put emphasis on paint finish. While the importance of skillfully applied paint cannot be overstated, as this is what you (and others) will be looking at for years to come, if you want the beauty of a freshly painted home to last, do not underestimate the importance of proper surface preparation on exterior projects, especially for a Victorian structure.

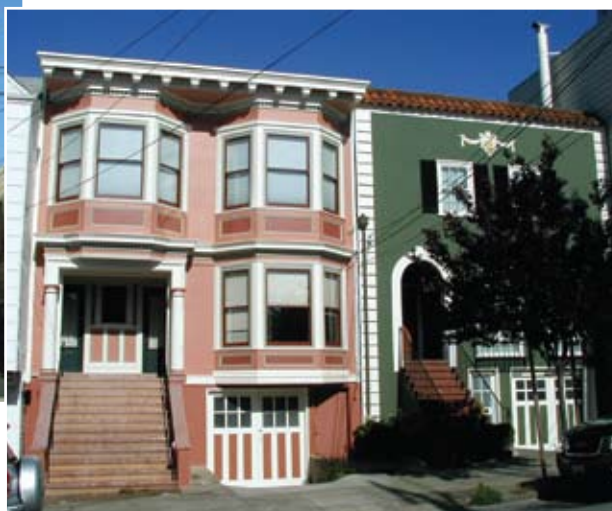
Here is a brief summary of steps that may be required:

- Before any painting has begun, check for leaks and any moisture getting into the substrate. You may need to repair any roof leaks, gutters, windows and leaky plumbing. Unless the water is prevented from entering the substrate, the quality of your paint job will



wood. This can be an expensive step, because some of these trim pieces may be difficult to replicate. If not too badly damaged, some pieces can be salvaged by injecting

be compromised.
• Check for and replace all rotted or missing



loose wood fibers with epoxy sealer in order to solidify softened wood. Then replace all missing wood sections with the two-part epoxy filler.

- Replace all badly rusted window and water table flashing. Otherwise, rust will promptly come back. Even worse, the flashing may rust through and allow water into the substrate.
- Re-nail or screw in any loose siding, trim boards and brackets.
- All rusting-through nails should either be pulled or punched in to set the nail

heads slightly below the surface. Spot prime with a rust-inhibitive primer and then fill nail

continued on page 12...

COLE HARDWARE'S Repair Referral Service was created to introduce our customers to the finest contractors and tradespeople we know. We have formed alliances with independent business people in order to provide you with the very best in home repair, maintenance and remodeling. Some jobs may even be performed by qualified members of our staff.*

We provide referrals for:

Air Conditioning
Air Duct Cleaning
Antique Restoration
Appliance Repair and Installation
Architectural Planning
Artisans of all types
Asbestos Removal
Audio Systems
Brick and Stone Masonry
Cabinetmaking
Carpentry
Carpet and Linoleum Installation
Carpet Cleaning
Chairlift Installation
Chimney Sweep and Repair
Closed-Circuit TV Installation
Commercial Kitchen Installation
Computer Data Cabling
Computer Grounding
Computer Repair and Tutoring
Corian Installation
Custom Closets, Pantries and Storage Solutions
Deck Cleaning and Staining
Disaster Cleanup and Restoration (Flood/Fire/Sewage)
Door Refinishing
Doorbell Repairs
Drain Cleaning
Dryer Vent Cleaning
Drywall/Lath and Plaster Repair
Electrical
Emergency Power Restoration
Faucet Repair and Installation
Fence Building

Furnace Repair and Installation
Furniture Refinishing and Repair
Furniture Upholstering
Garage Door Repair, Replacement and Opener Installation
Gardening
General Contractors
Glass Installation
Granite/Marble/Stone Installation
Handyman Services
Hardwood Floors
Hauling
Heating and Furnace Repair and Replacement
Home and Office Cleaning
Home and Office Organizing
Home Entertainment Systems
Houseplant Services
Insulation Installation
Intercom Systems
Interior Design, Staging and Color Consultation
Interior Wood Refinishing and Restoration
Irrigation System Installation
Kitchen and Bath Remodeling
Lamp Restoration and Repair
Landscaping
Lead Inspection and Abatement
Leak Detection
Lighting Consultant
Lock Installation
Locksmith Service 24/7
Mold Remediation

Motion Detector Installation
Moving
New Construction
Painting
Picture Framing
Plumbing
Powerwashing, Commercial and Residential Cleaning
Property Management
Registered C&D Transporters
Remodeling / Major Remodeling
Roofing and Repair
Rooftop Gardens
Room Additions
Security Evaluation / Consultation
Seismic Upgrading
Sheet Metal Work
Shutter Installation
Solar Panel Installation
Stained Glass Creation and Repair
Stucco Work
Telephone System Installation
Telephone Wiring
Tile Installation
Video Surveillance Systems
Water Heater Installation
Waterproofing
Welding
Window Cleaning
Window Repairs
Window Screen Installation
Wood Finishing

Re-COLE-mend...

COLE HARDWARE REPAIR REFERRAL SERVICE

Independent contractors and tradespeople for...

- home repair
- maintenance
- remodeling

Contact us at 415/753-2653 ext. 3 or email homerepair@colehardware.com

All of the vendors and trades people in our Home Repair Referral Service have been pre-screened and carefully selected. Your satisfaction is 100% guaranteed. Period.*

*If you aren't 100% satisfied, we will work as your advocate until you are.

Contact us at www.colehardware.com/homerepair

Meet Greg: Our Solar Energy Installation Expert

Many homeowners are investing in solar energy installations in their homes as a way to save on skyrocketing energy costs. The California Solar Initiative offers financial incentives for



solar installations, and many homeowners are actually able to generate their own power and sell back their unused electricity into the electric grid, saving even more money. Contrary to what you might think, solar installations still do work in foggy San Francisco. For existing home installations, the incentive programs are run through the California Public Utilities Commission (www.cpuc.ca.gov).

Now in his 30th year working with solar energy, Greg is a native San Franciscan whose family has been doing business in the City for many generations. In fact, his general office was built by his great-grandfather in 1916.

Before launching his solar installation company, Greg worked in his family's electrical contracting business. In 1980 he went to work for what was then the largest solar water heating company in San Francisco, starting out as an installer. He ultimately became the field supervisor and served on the board of directors. That company installed solar thermal systems on S.F. public housing and the University of San Francisco, as well as hundreds of private apartment buildings and homes.

The solar industry dried up in the 1980s because of a change in public policy. But Greg

figured that ultimately solar energy would return, because quite simply, it made too much sense. In 1989 he formed his company, and in 1996 they installed the first permitted solar-electric system in the City, then the first net-metering system in the City, and one of the first in the state, the following year. His company followed that up with the first commercial solar system in the City.

Greg's company today employs 20 workers, and he believes, "You are only as good as the people you work with." Some folks have been with the firm for 10 to 20 years! Greg and his team handle all the rebates, permits, inspections and approval processes necessary to build a solar system for your home, apartment or business.

Greg's firm has its own fabrication equipment, and they custom make racks and assemblies as needed for the large variety of projects encountered. In-house trades include electricians, plumbers, sheet metal and mechanical journeymen—even a windsmith! Greg himself holds a general contracting license and a solar energy license with the state of California. Unlike some newer solar installation companies, Greg rarely subcontracts work, unless it is absolutely necessary for some expertise.



Urban League and Conservation Corps, long before there were incentives to do so.

All systems are built for San Francisco's marine environment, using high-grade stainless steel and aluminum. Of the over 500 solar systems his



company has installed, most are still maintained and serviced by Greg and his team.

Here are some of the various types of solar installations that Greg and his team offer.

Solar Electric—Photovoltaics (PV)

Solar energy is a popular form of renewable energy in San Francisco. Despite the frequent

layer of summertime fog and dampness, solar panels perform efficiently. Thanks to recent California "net-metering" laws, solar energy is now cost effective in an urban environment.

For the past several years, many San Francisco solar system installations have been net-metered, or connected to the local utility grid. This allows businesses and homeowners to generate their own electricity and sell unused energy back to the grid. Utility intertied systems collect and add power to the utility grid during the day to offset power use at night. During daylight hours, the owners' electrical meters run backward as their solar panels produce more energy than they need. At night, the meters run forward as the owners use more electricity than they can generate. The utility charges only for the net difference of power consumed and power produced. With net-metered solar energy and some energy-efficiency improvements, owners may eliminate their utility costs.

In a solar electric or photovoltaic (PV) system, energy is collected by the PV modules and sent through an inverter. An inverter transforms direct current (DC) power generated by the PV modules into alternating current (AC) power. This power is used onsite or is sent back through the electric meter, spinning it backward during periods of high production and low consumption.

Solar Thermal

A solar thermal system is designed to work as a solar preheat for a conventional gas system. The solar collector absorbs heat from sunlight and

continued on page 12...

PRODUCT KNOWLEDGE

Kitchen Faucets

Probably nothing in your kitchen gets as much use as your kitchen faucet—arguably the most functional and utilitarian piece of equipment in the house. A new faucet can also give your kitchen a new aesthetic with the beautiful designs and finishes now available. With California's new lead law on faucets going into effect this year, we took the opportunity to upgrade our faucet displays and assortments. We carry faucets by Moen®, Delta®, Price Pfister® and Oak Brook® in a wide range of styles and price points, starting as low as \$39.99.

Kitchen faucets come in a variety of styles:

- **Cartridge faucets** are found in both single- and double-handled models and are quite common on kitchen sinks.
- **Ball-type faucets** are single-handled and have a dome-shaped cap or faucet knob.
- **Ceramic disc faucets** are like ball faucets in that they can have a single handle. Under the cap, the workings of the disc faucet are contained inside a cylinder (unlike the many individual internal parts within a ball-type faucet).
- **Stem faucets** always have two handles and can be distinguished from other types of faucets by the way they turn off. You should feel the pressure of a rubber washer being squeezed inside the faucet as it turns.
- **Single-handle pullout faucets** allow the spray to be directly pointed, and the spray wand docks in the faucet neck.

Delta® Single-Handle Kitchen Faucet

This ball-type faucet sports a classic look in a chrome finish and has a matching finish spray mounted on the deck. Diamond Seal™ technology provides a durable, leak-free faucet. (Sku 4326708, \$99.99)



Moen® Single-Handle Pullout Faucet

This faucet in a classic stainless finish is guaranteed not to tarnish or corrode. Designed for either one- or three-hole installation. It comes with two spray settings. (Sku 4317020, \$154.99)



Oak Brook® Hi-Rise Two-Handle Faucet with Spray

This ceramic cartridge-style faucet allows you the option to install with either metal lever handles or porcelain handles. (Sku 4309282, \$59.99)



Price Pfister® Two-Handle Faucet with Spray

This stem faucet with a ceramic disc features a 10"-high arched spout and a stainless steel finish. (Sku 4323259, \$99.99)



Leaky Faucets

A leaky faucet is probably one of the most common household problems and one of the simplest to fix. While one drip of water doesn't seem like a lot, 4,000 drips can equal a liter of water! The first step to fixing your leak is to figure out the type of faucet. Once you've identified the type of faucet in question, the next task is to know what part, in the midst of many, is causing trouble. First and foremost, you must *turn off the water supply*.

The shutoff valves will probably be located under the sink, but some older homes might require that the water supply to the entire building be turned off. For two-handle faucets, turn off water to either the hot or cold side first, to isolate which side might be leaking.

Be sure to include padding like cloth, tape or gauze between every tool and the faucet to protect against scratching or marring the surface.

Ball-Type Faucets

Remove the cap and check the valve springs for wear. They may appear compressed or have lost tension. While the faucet is disassembled is a good time to replace the springs. The rubber seat surrounding the springs may also be causing the leak. Again, it's a good idea to replace this part now, rather than coming back to it later. We have kits that include both springs and the accompanying seats sold together. Next, check that the ball valve isn't worn or damaged—a pitted or eroded ball slot is a dead giveaway. Also, the ball slot should fit snugly around and attach to the faucet body's pin.

Disc Faucets

With faucets of this type, usually the culprit is a dirty cylinder. Remove the cylinder from

the faucet body and clean the openings with a pad designed for nonstick cooking surfaces. Next, rinse the cylinder under fresh water. If the leaking doesn't stop after reassembling the faucet, the entire faucet will most likely need to be replaced.

Single- and Double-Cartridge Faucets

Leaks here are usually caused by weathered O-rings. These are typically black rubber or Teflon circular seals found within the cartridge. To replace an O-ring, bring both the cartridge and retaining nut with you to any COLE HARDWARE location, as these replacement parts need to be perfectly matched. Remove the old ring and clean away any deposits on the stem.



Spread a thin layer of petroleum jelly or heatproof grease on the rings and the stem itself before sliding the new ring into its groove.

Stem Faucets

Faulty O-rings are also a common cause for leaks with this type of faucet. If your faucet uses packing string, remove the old string from the stem along with any buildup before replacing the string. Feel for wear on the top of the faucet's valve seat. If it's not completely smooth, it should be replaced or resurfaced.

Another cause of a leak on a stem faucet can be a worn-out washer on the end of the stem. Replacing the washer will correct the problem, but because these washers come in different sizes, you should bring the stem into our stores to ensure a proper fit.

PRODUCT KNOWLEDGE

City Living Essentials

Urban dwelling provides us with a lot of perks you might not find in the suburbs: a fast-paced lifestyle, culture at your fingertips, our famous rolling hills, the character of a quaint Victorian apartment and more. But these same perks can sometimes provide challenges, too. We've assembled some of our favorite products that we find essential and that make City living that much more enjoyable.

Storage

Unfortunately the charm of a Victorian living space really translates to "no storage." If you aren't a minimalist by nature, try some of these storage solutions.

Collapsible Housewares

A salad spinner is a wonderful kitchen tool, but they are usually big and bulky. This unique spinner from Progressive™ collapses to about one-third the size of a regular spinner. The self-retracting pull cord makes washing and drying fruits and vegetables quick and easy. (Sku 645065, \$29.99) The collapsible berry colander folds to save about two-thirds of the space of other similarly sized colanders. (Sku 628050, \$4.99)

Under-the-Bed Shoe Storage

Don't let that space under the bed go to waste! Store your stilettos and sneakers in this space-saving shoe organizer. The clear zipper see-through cover lets you see your shoes and keeps them protected from dust and moisture. Holds up to 12 pairs of shoes. (Sku 6168553, \$14.99)



Wonder Hanger™

Eliminate closet clutter and triple your closet space. Each Wonder Hanger holds up to five regular clothes hangers and takes advantage of vertical space. (Sku 6163620, \$10.99)



Fridge, Pantry and Medicine Binz™

Organize the food in your fridge or pantry or the medicines and beauty supplies in your bathroom with these nifty Binz from Interdesign® that are available in assorted sizes and designs. (Fridge & Pantry Binz: Skus 636038, 41, 53, 61, \$7.99–\$13.99; Medicine Binz: Skus 675041, 2, 4, 5, \$7.99–\$10.99)



Pot Racks

Pots and pans are bulky and take up a lot of valuable storage space. A pot rack allows you to keep your pots and pans at arm's reach. Available in assorted styles and patterns ranging from \$29.99 to \$149.99.



Ladders and Step Stools

There's a reason it takes two San Franciscans to change a lightbulb. No—not to share the experience, but more likely for the second person to hold the wobbly chair you're standing on! Although we love our high ceilings, sometimes the simple act of changing a lightbulb or cleaning cobwebs can be challenging.

Kikkerland® Folding Stools

These lightweight step stools will hold up to 300 pounds and fold flat to conveniently slip under a bed or behind a sofa. When open, the stool is 15 inches high; when closed, a handle appears for easy carrying. The stools are ideal for children who need an extra step up to brush their teeth or wash their hands. Available with a black or gray folding top. (Skus 120101, 132002, \$19.99)



GPL Compact Folding Ladders

Lightweight and constructed of strong anodized aluminum and steel parts, these ladders provide sturdy support for projects with rubberized anti-skid feet. Then they fold easily for storage. Available in 5-foot, 6-foot, 3-way extension and 3-step stool styles. (Skus 132300–3, \$59.99–\$119.99) Styles may vary by location.



Step Stools

A two- or three-step stool is essential for those simple chores where a large ladder might not be necessary. The Polder™ Featherweight 3-Step Stool is sturdily constructed and has an anodized aluminum alloy frame. It weighs just 6.125 pounds, making it easy to cart around to any area of the house where it is needed. The top step measures 32 inches high, and the 51-inch high rail provides added support. Folds for easy storage. (Sku 132003, \$59.99)

continued on page 10...

COMMUNITY NEWS

COLE HARDWARE and the SF Playhouse are giving you a "Fantastick" Night Out!

Enjoy a night at the theater by entering to win a pair of tickets to the exciting, re-imagining of the legendary musical *The Fantasticks* at the SF Playhouse for a Thursday, July 8, showing. To enter, simply e-mail your name and phone number to win@SFPlayhouse.org. The deadline for entries is Monday, July 5! Five lucky, loyal Frequent Shoppers will each win a pair of tickets.

COLE HARDWARE members can also purchase specially

priced \$30 tickets to this performance (regularly \$40) by calling **415/677-9596** and asking for the "COLE HARDWARE Fantasticks Special Deal."

For further information, visit www.SFPlayhouse.org.

One entry per person. Not responsible for e-mail entries not received. The COLE HARDWARE specially priced tickets are limited to availability and on a first come basis.



THE SF PLAYHOUSE

Come Celebrate the Inner Sunset Farmers' Market One-Year Anniversary!

This summer, the Inner Sunset Farmers' Market is celebrating its one-year anniversary with special events, raffles and activities for kids. The market is held in the parking lot at 9th Avenue and Irving every Sunday (rain or shine) from 9:00 am until 1:00 pm. The market has more than 35 stalls and includes neighborhood favorites like Arizmendi Bakery, City Bees' honey, and wild, wonderful greens from Marin Roots Farm. Bring your kids, your dogs (doggie valet services provided by Valet Barking) and your COLE HARDWARE reusable shopping bag!



The Farmers' Market is sponsored by the Inner Sunset Park Neighbors (ISPN), an organization whose purpose is to engage with all Inner Sunset residents and business owners to improve quality of life, build a sense of community and generate pride in the neighborhood. All Inner Sunset residents are encouraged to join the ISPN and contribute ideas, help organize events and improve the community. For information, visit www.inner-sunset.org.

E-Waste and Donation Drop-Off

Our Mission Street location will sponsor a donation drop-off day at our Mission Street store on Saturday, July 31, from 10:00 am to 2:00 pm with our friends at Goodwill.

We have expanded the list of what we can accept for donation. Besides consumer electronics, we will accept clothing and accessories, home accessories, kitchenware and small appliances, and bicycles. (Sorry, but we cannot accept large appliances, sofas, mattresses, snow skis, auto parts and furniture.) Goodwill will

take almost anything in good, clean, working condition. High-quality women's clothing and housewares are particularly needed and appreciated. As a guideline, if you would give it to a friend or hand it down to a relative, it is perfect for Goodwill.

Consumer electronics have unfortunately become practically disposable, so this is a great opportunity to dispose of outdated phones, computers, stereos and televisions properly and safely, so they stay out of our landfill.

Take advantage of this opportunity to clean house!

Saturday, July 31
3312 Mission Street @ 29th
10:00 am-2:00 pm



City Living Essentials

...continued from page 9

Ferrowatt™ Reproduction Light Bulbs

Authentically detailed like the originals invented by Thomas Alva Edison, these bulbs are authentic right down to their looped filaments and hand-exhausted tips. These historic-looking bulbs are the perfect finishing touch of authenticity to Victorian apartments. They're also the ideal fix for an unsightly light fixture when updating the fixture might not be



feasible. Available in assorted styles in 15 to 60 wattages. (Skus 317300-6, \$13.99-\$21.99)

Rolling Wheels

Lugging laundry and groceries up and down hills is not only a workout, it's not much fun either. True urban dwellers roll along just fine with a nice set of wheels—rolling wheels that is, not a car.

Kikkerland® Jolly Trolley™

This trolley is not only fashion forward, but also extremely practical for all



your errands. The shiny bag looks chic and is waterproof, too. Available in black, red or white. Colors may vary by location. (Skus 738001-3, \$29.99)

Rolling Cart

For bigger grocery store outings and trips to the laundromat, a larger rolling cart will make the walk home a lot more pleasant. (Skus 6003636, 644, \$44.99)





ENVIRONMENTAL INFO

GOOD FOR THE EARTH — WE TAKE ACTION FOR THE ENVIRONMENT!

What's New Around the Green Home

Seventh Generation® Disinfectants

Seventh Generation's new disinfecting multisurface cleaner and wipes are the first of their kind. The only EPA-registered disinfectants approved to claim "kills germs naturally on hard, nonporous surfaces," these products utilize patented thyme-based technology. Thyme is "nature's disinfectant"—a natural, plant-derived disinfectant commonly found in nature. Both the wipes and spray kill 99.99% of germs, including influenza A, naturally in streak-free formulas that enable quick and easy cleaning. (70-Count Wipes: Sku 103002, \$7.99; Lemongrass & Thyme Multi-Surface Cleaner: Sku 110109, \$5.99)



World Centric® Biocompostable Serveware

Made from annually renewable resources instead of nonrenewable resources, such as petroleum (plastic and styrofoam), or scarce and dwindling renewable resources (paper), biocompostable products are less harmful to the environment in production and disposal process. For your next backyard barbecue or party, this serveware is ideal to



green up your event.

The new plates and bowls from World Centric are made from sugarcane fiber waste pulp, also known as bagasse, after the juice extraction process. Utensils, available in a package of assorted flatware, spoons, or forks, are made from corn starch. All products are sturdy and strong and are usable for hot foods up to 190°F. (Plates: Sku 64769, \$5.99; Bowls: Sku 625043, \$3.49; Flatware: Skus 625048–50, \$3.99)

Composting Times

The rate of biodegradation for different biocompostable products is dependent on the nature and thickness of the material, as well as the composting conditions. Commercial composting facilities grind materials, turn over the piles and reach high temperatures, reducing the time it takes to compost. Home composting system rates are slower and can vary depending on how often the pile is turned over and the moisture and material content.

Product	Home Composting	Commercial Composting
Sugarcane Plates & Bowls	1–3*	1
Corn Starch Plates & Bowls	6–12	3–6
Corn Starch Utensils	9–18	6–12
Corn Starch Bags	3–6	1–3

*All times in approximate months



Recycle at COLE HARDWARE!



Bring to any of our four stores:

CELL PHONES:

Personal cell phones—batteries and chargers not required. PLEASE, no cordless home phones, car phones, walkie-talkies, pagers or two-way radios.

BATTERIES:

Rechargeable (NiCad, NiMH) and household (alkaline and carbon).



OLD LATEX PAINT:

- Recycle dry, clean, empty metal paint cans through your regular trash pickup. The latex paint containers you bring us should have paint in them!
- The ORIGINAL label on each can must CLEARLY state "latex," "acrylic," or "water-based" paint. No handwritten labels will be accepted.
- Be sure that lids are SEALED ON TIGHT and containers are rust-free and don't leak.
- You must not be a commercial paint user.
- Please limit your drop-offs to no more than 10 gallon-size containers (or 40 quart-size containers or a combination of both) at a time. Containers are counted by size, not by the volume of paint they contain.
- Take paint to the customer service desk.
- PLEASE, no brushes or rags!



PROPANE TANKS:

Small (14 or 16.9 oz.), empty, nonrefillable propane cylinders only. Household only. Limit 5 per visit.



SPENT FLUORESCENT BULBS:

CFLs, tubes up to 8 feet, U- and D-shaped tubes. Drop-off limit is 10 bulbs.



SCRAP METAL:

Copper and brass.

EXPIRED PRINTER CARTRIDGES:

Must be in plastic bags to avoid leakage.

SOFT PLASTIC RECYCLING:

Clean plastic only. Households only. One basketball-size amount per visit please.

For Bay Area recycling resources, visit www.colehardware.com/recycle.htm

Painting Your Victorian for Curb Appeal

...continued from page 6

holes with an epoxy filler. Once more, if this is not done, the rust will be back and spoil the look of your new paint job.

- Exterior surfaces should be washed to remove mildew, dirt and excessive chalking.
- Loose and cracking paint should be thoroughly scraped off



Before



After

and sanded. Consider complete stripping if more than 25% of the coating is cracked or peeling.

- Open joints around windows, doors and all open vertical seams must be caulked. Ensuring that this step is done thoroughly, and that only a good-quality caulk is used, may be your last defense to water entering your home.

- Prime with a quality primer, appropriate for the type of surface, which essentially serves as a foundation that supports the finish coat. Understanding its purpose should help you understand the full importance of primer. In short, the best primer available is going to be the best choice for your job.

This may seem like a lot of work just to get ready to paint—and it is! But if you are like me, your heart will beat just a little bit faster when you see a beautiful building. I feel this every time I come home.



Contributed by Yefim, one of the premier painters in our Repair Referral Service. To contact Yefim, phone **415/753-2653 ext. 3** or e-mail **homerepair@colehardware.com**.

Meet Greg: Our Solar Energy Installation Expert

...continued from page 7

sends the heated water into a separate storage tank. Sensors determine if the water needs additional heating before entering the hot water system in the building. Solar preheating reduces the amount of natural gas needed to heat water by increasing the temperature of water entering the conventional storage tank and heating system. For example, solar preheated water may enter the storage tank at 90°F and thus need to be heated by 30 degrees before leaving the hot water tank. A conventional system receives water at 60°F and requires the amount of energy necessary to raise the temperature to 120°F. In this example, the solar preheat reduces the amount of energy needed by one half.

Other solar thermal services offered by Greg include:

- Design and installation of new systems
- Removal and reinstallations of systems prior to and after the installation of a new roof
- Panel repair
- Preventative maintenance inspections

Cogeneration

Cogeneration refers to a system that produces two useful sources of energy: electricity and heat. Greg's company sells, installs and services

Tecogen® cogenerators that burn natural gas to power a generator, which produces electricity. The generator is cooled by water, producing hot water as a by-product. Unlike conventional electric generators, cogenerators harness the "waste" heat instead of throwing it away. Greg's installations have included health clubs, municipal pools, and apartment buildings



with large domestic water heating, pool water heating or space heating requirements.

In the right application, natural gas cogenerators can pay for themselves in two to five years. One of Greg's clients reduced their utility bills from \$100,000 to \$50,000 by installing a natural gas cogeneration system. These natural gas cogenerators produce 60 kilowatts of electricity continually, provided there is a heat load to accept heat from the generator. Cogenerators

are a 90% efficient means of producing both electricity and hot water at the same time.

If you think a solar energy system might be for you, contact Greg through our Design + Build Referral Service at **415/753-2653 ext. 3** or **homerepair@colehardware.com**. Be sure to ask about all the rebates for solar water heating and electric that now exist, as well as the federal tax credits and grants available for businesses, not to mention the City of San Francisco incentives!

CUSTOMER SERVICES

THE EVER-GROWING LIST OF EVERYTHING WE DO FOR YOU

ACE® Hardware: Our affiliation with ACE allows us to get quality products quickly and opens doors of the world's manufacturers, so we can get you what you need. ACE's buying power enables us to sell to you at the right price, too!

ATM and Credit Cards: We'll accept your ATM cards for payment. You can get cash back, too. We also accept VISA, MasterCard, Discover and American Express credit cards.

Balloons: We have free COLE HARDWARE helium balloons for the kids. Helium is available to inflate your party balloons for fifty cents per balloon.

Bridal and Gift Registry: We'll load your name and list of everything you wish to register in our computer. Your friends and family can then call us to place gift orders. Recipients receive a gift card equal to 10% of the total value of all gifts purchased. E-mail Julia@colehardware.com.

Business-2-Business: Members of the program receive free delivery, special pricing and personal service. Call our Cole Fox location at 415/777-4400.

Carry-Out Service: We'll be happy to load your purchases into your car. Just let the cashier know, and we'll take care of you.

Charge Accounts: For your convenience, we have in-house charge accounts for businesses. Stop by and fill out the simple application, and we'll open one for you.

Chauffeur Service for Senior Citizens: If you need help getting to our stores and you live in San Francisco, call us to arrange a mutually convenient time to pick you up.

Color Matching: We have terrific paint matching computers. Bring in a swatch of fabric or quarter-size paint chip and the staff can match just about any color.

Commercial Supply: We have an entire division devoted to servicing the needs of commercial and industrial customers throughout the Bay Area and beyond. We offer charge accounts, on-site account specialists, free delivery and the personal services of Joe, Damion, Melinda, and Rodney. Give them a call at 415/647-1800 or e-mail colesupply@colehardware.com

Community Savings Days: One day a month, we offer a 20% discount to students, seniors, school district employees and active members of the military or veterans. The promotion cannot be applied to frequent shopper accounts and is not valid on gift cards, Muni or special orders.

Coupons: We honor all manufacturers' coupons. If we carry the product, we'll honor any other store's coupons as well.

Delivery in San Francisco: Free delivery for Frequent Shoppers Club members on weekends. For non-Frequent Shoppers, delivery is free for purchases of \$100 or more, \$10 for purchases with total pretax amount under \$100 and \$5 for the elderly or disabled.

Digital Camera: Have a problem that you can't describe? We'll lend you a digital camera to take a photo of the problem so that we can better help you. (Note: Credit card required for camera loan.)

Discounts:

Birthday Discount: Come in on your birthday, show your I.D. and we'll give you a percent discount amounting to half your age. Must be a Frequent Shoppers Club member. Discount is available only on your actual birthday and cannot be applied to sale/promotional merchandise, power tools, household appliances, water heaters, special orders or Muni. Discount applies to purchase for the personal use of recipient only. Maximum discount \$100.

Disabled Customer Discount: Sign up for our Frequent Shoppers Club, show your Medi-Cal card or other proof of disability, and get 10% off all discountable merchandise in our stores.

Senior Citizen Discount (age 65 or older): 10% off all purchases of nonsale merchandise.

Student Discount: Show us your student I.D. and receive a 5% immediate discount, plus 5% annual rebate, custom key tag, use of our fax machines and more!

Electrician: Call our Home Repair Referral Service at 415/753-2653 ext. 3 Monday through Friday 8:00 am–5:00 pm and after store hours for emergency referrals 24/7. On weekends and during store hours, dial 415/753-2653 and press 3 for a direct referral.

eLine: The COLE HARDWARE eLine is delivered free, direct to your desktop. The eLine contains information on new products, practical tips and more (or less!). Sign up at www.colehardware.com.

e-mail: Write us at service@colehardware.com—any time!

Fax Service: Our fax machines are for your personal use. We do charge for our fax service—please ask for rates. Fax numbers: Cole Street: 415/753-0957, Mission Street: 415/647-6554, Cole Fox: 415/777-4453, Polk Street: 415/674-8917.

Frequent Shoppers Club: Earn an annual 5% dividend on purchases and much more. Membership is quick and free. Sign up today!

Gift Cards: We offer COLE HARDWARE gift cards and ACE Hardware gift cards in almost any denomination.

Glass Cut to Size: Plexi, single and double-strength glass cut while you wait. We can also special order curved, tempered, laminate and obscure glass, as well as mirrors and tabletops.

Hardware Hotline: We publish our newsletter every month of the year. See the online version at www.colehardware.com. It's homegrown and filled with interesting articles about hardware, our community and, of course, COLE HARDWARE.

Hours of Operation: We're open every single day of the year including every holiday.

Cole Street: weekdays 7 am–7:30 pm, weekends 8 am–7 pm

Cole Fox: weekdays 8 am–7:30 pm, weekends 9 am–5:30 pm

Mission Street: weekdays 7 am–7:30 pm, weekends 8 am–7 pm

Polk Street: weekdays 8 am–8 pm, weekends 9 am–7 pm

Lamps Rewired: We offer rewiring services for table and floor lamps. Contact our stores for information and pricing.

Lifetime Warranty: Your "complete satisfaction" dictates that we offer a lifetime warranty on just about everything we sell.

Locksmith Service and Key Cutting: We cut keys at all our stores including hard-to-find computer chip keys for automobiles. We have an expert locksmith on duty Monday to Friday at our Cole Fox store downtown (415/777-4400). We can also send a locksmith to your home or business 24/7. Call 415/753-2653 ext. 3 Monday to Friday 8:00 am to 5:00 pm, or after store hours, dial 415/753-2653 and press 3 for a direct referral.

Low Price Guarantee: Just bring in another store's ad and we will honor the lower price.

Muni: We sell monthly Adult, Youth and Senior Fast Passes, monthly Disabled Stickers, 1-Day, 3-Day and 7-Day Passports and Parking Meter Cards in \$20 and \$50 denominations.

Pipe: We cut and thread galvanized and black pipe, your pipe or ours. (Note: Cole Fox can't thread.)

Plumbing Service: Call our Home Repair Referral Service at 415/753-2653 ext. 3 Monday through Friday 8:00 am to 5:00 pm and after store hours for emergency referrals 24/7. On weekends and during store hours, dial 415/753-2653 and press 3 for a direct referral.

Recycling: Bring your old latex paint (S.F. residents only; liquid paint only—put dried paint cans into your own recycle bin, lids off!), used rechargeable batteries (nickel-cadmium), used household batteries (alkaline and regular), copper and brass scrap metal (such as keys, bathroom and plumbing fixtures), cell phones, expired printer cartridges and spent fluorescent bulbs into any of our four stores, and we will send them off to be recycled into new products. See page 11 for details.

Repair Referral Service: Our alliances with competent, honest, quality tradespeople assure you excellent work on your home, property or office. We are a licensed contractor (#708403). Call 415/753-2653 ext. 3 or go to www.colehardware.com/homerepair.

Repotting Service: Pick out the plant and the pot, and our Cole, Mission or Polk Street Nursery staff will repot your plant for free.

Return Policy: We accept returns on just about anything. (Power tools, appliances, etc., may only be returned subject to manufacturer's warranty. Hand tools exchanged for defective replacement only.)

Room Painting Software: All of our paint departments are equipped with room painting software. Simply bring in your camera's memory chip, upload your image and choose paint colors to review.

Rug Cleaners Rented: We have steam carpet and upholstery cleaners available for rent at each store.

School and Community Assistance Partnership Program: Nonprofit organizations whose mission is to improve the lives of those around us, either directly or through cultural enrichment, can join a special program of discounts and donations. COLE HARDWARE donates 10% of all purchases made by your organization's community. Go to our COLE HARDWARE Community Partners page for information and a list of partners (page 15). Also, be sure to check out www.colehardware.com/partners.

Sharpening Service: Knives and scissors sharpened while you wait or same day service at our Cole, Mission and Fox stores (Note: Fox doesn't sharpen scissors, just knives).

Speakers Bureau: Topics range from home repair, to gardening, to security, to small business, marketing and more. If you need a speaker for your organization, call 415/753-2653 ext. 5.

Special Orders: If we don't have what you need in stock, we'll do our best to obtain it as quickly as possible.

Tool Rental: We rent floor sanders, many hand and power tools, and garden tools, too. Contact our stores for availability. (Note: Floor sanders not available at Cole Fox or Polk Street stores.)

UPS Shipping Service: We ship packages all over the country for members of our Frequent Shoppers Club via United Parcel Service.

Website: Visit www.colehardware.com.

Windows, Doors and Window Screens: Window and screen repairs are available at our Cole Street and Mission Street stores. Contact these stores for information and pricing.

By the way, we sell hardware, too.



COMMUNITY CONNECTIONS

BAY AREA BUSINESSES

Attorney: Practicing 25 years in San Francisco and offering personalized, attentive service, reasonable fees. Advice and representation in residential and commercial tenancy matters—leases, notices, eviction, Rent Board petitions and hearings; drafting/enforcing contracts; formations of business entities—partnerships, limited liability companies, corporations. Free consultation. John R. Weinstein, Attorney-at-Law. Telephone 415/863-5896.

Bed and Breakfast Hosting: If you have an extra bedroom, with or without a private bath, that you would like to rent out on a nightly basis, let us know. Additional income—meet guests from all over the world. Phone: 415/899-0060, e-mail: reservations@bbsf.com, website: www.bbsf.com. Bed & Breakfast San Francisco—since 1977.

Bookkeeper: Professional service with over 20 years experience, specializing in small business, QuickBooks, Pro Advisor, A/P, A/R and payroll. Assistance with financial reporting, budgeting, audit controls and cash management. Visit www.alphaquickbooks.com or contact Liz at emckersie@comcast.net or 415/254-4600.

Financial Services: Bookkeeping, payroll, budgeting, financial reports, cash management, QuickBooks setup, reconciliations, A/P, A/R and much more. 15 years experience in bookkeeping/accounting. All companies—big and small. schwartzconsulting@gmail.com.

Interior Design: Everyone is unique, and your home should reflect your individuality. Refreshing your interiors reduces stress in your life. At **ALMOST INSTANT INTERIORS** we create affordable, unique, inviting interiors often using deceptively simple solutions. For makeovers, color consultation, interior architecture and full service design, contact: 415/824-4440, almostinstant@gmail.com or visit www.almostinstantinteriors.BIZ.

Interior Design Services: You have an idea of a style and mood for your home but you just need a little professional guidance to realize your vision. Carole Glosenger Design can assist you with everything from developing paint color schemes to remodeling your kitchen and bath. For information call 415/221-7379 or email cgstudio2@aol.com.

Nanny Services: Need superior child care? Looking for a small, quality company? Call Natural Nannies at 415/839-5310 to meet competent, well-trained, experienced nannies. Check out our website to learn more about us at www.naturalnannies.com. We are caring, creative and conscientious. Any questions? E-mail us at info@naturalnannies.com.

Orange Dog Manor: Cole Valley Vacation Rental is perfect for housing visiting grandparents or out-of-town friends. Fully furnished studio apartment includes kitchen and private bath. Special discount for weeklong rentals. Visit our website at www.orangedogmanor.com or call 415/753-6886.

Organize Your Home/Home Office/Finances: And feel calmed, inspired, productive. Working together we can bring your space, clutter, paper and/or finances to order. Member NAPO. Rates sensitive to economic times. Phone for no-obligation consultation, Linda James, at 415/285-3266.

Printing: We print business cards, office stationery and company brochures using the latest technology. Free consultations, easy e-mail prices and friendly service. Delivery right to you. Call or e-mail On The Mark for graphics, print and mailing services. References available. Call or e-mail: 415/621-2312 or Sam@printotm.com.

Proofreading: Lurilla has an English degree, a journalism background and was a member of the International Typographical Union for 40 years. She is an excellent proofreader (editing service also). Reasonable rates—unreasonable pickiness! First page free, then hourly rates apply. References available. Call 415/648-1868.

Real Estate: THINKING OF SELLING? - SAVE UP TO \$15,000.00 ON YOUR HOME, INCOME PROPERTY OR CONDO. A *San Francisco Magazine* Top Ten Realtor Bob Evans (Evjenth) 350+SOLD. Visit www.obeo.com/ca/bobevans or call for a SOLD LIST comparable to your property at 415/308-5902. License 702525 since 1978.

Real Estate: When you own it, you have control—the type of control renting does not afford. There are so many reasons to buy now: appreciation, mortgage interest and property tax deductions, interest rates at an all-time low and the home buyer tax credits. For more information visit www.marthaohayer.com. Or call 415/441-6331. License #00923719.

Stereo Repair / Home Theater Installation: Gene's Sound Service offers expert component-level repair of home audio systems, as well as audio, video and home-theater installation and system troubleshooting. Specializing in on-site service at your home, office or shop. Convenient day, evening or Saturday appointments available. Many local references. Advice on maintaining your system gladly given. "Gene's honest and knows his stuff. Give him a try." Bobby McFerrin. Call Gene at 415/377-1258. More info at www.genessoundservice.com.

Tax Services for Individuals and Self-Employed Persons: GRETCHEN BECK is an Enrolled Agent, licensed to represent clients before the IRS. Half-hour free consultation. Appointment only. 415/695-9811. wonderwoman2k@juno.com

Tax Prep and Planning: Tax services for individuals and self-employed persons. Over 20 years experience, especially in dealing with issues of artists, consultants and nonfilers. Free initial phone consultation. Please contact Alan Steger, Enrolled Agent, at 415/387-3057.

**LET US ...
RE-COLE-MEND
24/7 Locksmith, Plumbing and
Electrical Services**
Call 415/753-2653 ext. 3 to be
connected to a service person.

We have Fast Passes and Passports!

Why buy your Fast Pass, parking meter card and Muni Passport at COLE HARDWARE?

- We accept credit and debit cards, cash and commuter checks as forms of payment.* (Commuter checks cannot be accepted for meter cards.)
- Spend at least an additional \$5.00 when you purchase your Fast Pass and/or meter card and the entire purchase will be posted to your Frequent Shoppers account.
- Frequent Shoppers receive a 5% annual rebate on their purchases. That saves you 5% on your annual Muni Fast Pass purchases. What a deal!

We also have monthly Disabled Stickers.

* COLE HARDWARE discounts do not apply.

Follow COLE HARDWARE!

COLE HARDWARE
proud member of:



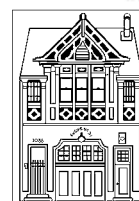
CVIA
COLE VALLEY IMPROVEMENT ASSOCIATION




INNER SUNSET PARK NEIGHBORS



Yerba Buena
ALLIANCE



Russian Hill Neighbors

COLE HARDWARE supports organizations working to enhance our great city. If you'd like us to be part of your membership please contact julia@colehardware.com.

COMMUNITY PARTNERS

DONATE TO YOUR CHOICE OF MORE THAN 400 SCHOOLS OR COMMUNITY GROUPS WHEN YOU SHOP AT OUR STORES!

Every year we give away over \$60,000 in goods and gift cards to our partner schools and nonprofit organizations in San Francisco. When checking out at our stores, customers mention their favorite school or group, and their transactions will then be posted to a special account for that group. A COLE HARDWARE gift card equal to 10% of all purchases credited to that account will be sent to the

group the following year.

We will donate (with three weeks' notice) Clearly COLE HARDWARE bottled water to an organization's fund-raising events to be sold or given away—whichever brings the most benefit. In addition, we'll donate a COLE HARDWARE gift card for silent auctions or raffles as a fund-raising tool.

Teachers and principals in the San Francisco school district may register with us to receive a discount on school supplies, and we will work with nonprofits on a case-by-case basis to receive a discount on community improvement projects.

Visit www.colehardware.com/partners for more information about a partnership with us.

SCHOOLS

A. P. Giannini Middle School (*76)
After-School Pursuits (*504)
Aim High School (21360)
Alamo School (*266)
Alice Fong Yu Alternative School (*1541)
Alvarado After-School (*503)
Alvarado Elementary School (*825)
Amer. College of Trad. Chinese Medicine (451)
Aptos Middle School (10594)
Argonne Elementary School (21299)
ASI Early Childhood Education Center (1660)
Before/After-School Immersion Care (*505)
Benchmark Institute (21216)
Brandeis Hiller Day School (*655)
Bret Harte Elementary (21344)
Buen Diam Nursery School (*88)
Buena Vista Alternative School (*24)
CS Children's School (455)
Cathedral School for Boys (*1275)
Cntr. for Learning in Retirement U.C. Ext. (425)
Chibi Chan Preschool (21325)
Children's Day School (*334)
Chinese American International School (150)
Chinese Immersion School at DeAvila PTA (21352)
City College John Adams Campus (*1860)
City College Mission Campus (*67)
City College of S.F. Downtown Campus (21312)
Claire Lilienthal Elementary School (*33)
Clarendon Elementary School (*80)
Clarendon JBBP Auction (5008)
Clarendon 2nd Community Program (*5007)

Cleveland Elementary School (2455)
Commodore Sloat School PCO (51)
Cong. Sherith Israel Religious School (2266)
Convent & Stuart Hall (21249)
Creative Arts Charter School (*1515)
Daniel Webster Elementary (21383)
Dianne Feinstein School (21211)
Dr. Charles Drew School (*47)
Dr. Geo. Washington Carver Elementary (658)
Dr. William L. Cobb School (21263)
E. R. Taylor Elementary School (*423)
Edison Elementary School (*3531)
Enterprise for High School Students (21202)
Everett Middle School (21317)
Everyday Magic Child Devel. Center (2002)
Fairmount Elementary School (365)
Families of Sunset PTA (19204)
Francis Scott Key (21320)
Francisco Middle School (21242)
Frank McCoppin Child Devel. Center (*651)
French-American International School (*44)
Friends of Potrero Nursery Hill School (21240)
Friends of Saint Francis Childcare Center (500)
Galileo Academy PTSA (1110)
Gates and Bridges Preschool (282)
Gateway High School (2931)
George Peabody Elementary School (2516)
German School of San Francisco (2913)
Glenridge Coop. Nursery School (1113)
Grattan Child Development Center (21332)
Grattan Elementary School (*35)

Growth & Learning Opportunity (*500)
Haight Ashbury Psychological Services (21384)
Haight-Ashbury Coop Nursery School (*22)
Hamlin School Parents Association (212)
Harvey Milk Civil Rights Academy (523)
Healthy Environments Daycare (*95)
Herbert Hoover Middle School (2290)
Horace Mann Middle School (*56)
Infant Development Center (*46)
Institute of Classical Homoeopathy (21306)
International Christian School (*42)
International Studies Academy (*693)
Iyengar Yoga Institute (*108)
James Denman Middle School (*75)
James Lick Middle School (*34)
Jewish Community H.S. of the Bay (1835)
John A. O'Connell H.S. of Technology (*1920)
Jose Ortega Elementary School (21347)
July Jordan School for Equity (21323)
The Junior League of San Francisco, Inc. (21314)
Katherine Michiels School (1335)
The Kid's Co-op Inc. (21264)
KIPP Bayview Academy (888)
KIPP San Francisco Bay Academy (902)
Lafayette School (2545)
Lakeshore Elementary School (424)
Lakeside Presbyterian Cntr. for Children (201)
Laurel Hill Nursery School (*40)
Lawton Alternative School (*57)
Leadership High School (21255)
Leonard R. Flynn Elementary School (3128)

Lick Wilmerding Library (*755)
Little People's Workshop (*4166)
Live Oak School (*99)
Longfellow Elementary School (*7555)
Lowell High School (21278)
Lowell High School German Club (*92)
Lycee Français La Pérouse (1330)
Marilyn Reed Lucia Child Center (*610)
Marshall Elementary School (3575)
McKinley Elementary School (*1025)
Miraloma Elementary School PTA (2175)
Miraloma Nursery School (*85)
Mission Dolores School (21239)
Mission Graduates (*1661)
Mission High School (*3750)
Mission Learning Center (21343)
Mission Kids Co-op (21201)
Monroe Elementary School (*216)
Montessori Children's House (21204)
New Traditions Alternative School (*2049)
Nihonmachi Little Friends (*2031)
Noe Valley Nursery School (*55)
Oakes Children's Center (*1348)
One Fifty Parker Avenue School (91165)
Out of Site Center for Arts Education (302)
Pacific Primary School (*1500)
Parents for Public Schools (906)
Paul Revere Elementary School (*555)
Phoebe A. Hearst Preschool (*1315)
Playmates Coop. Nursery School (*2340)
Presidio Hill School (*77)

Presidio Middle School (21259)
Raoul Wallenberg High School (*43)
Redding Elementary School (21215)
Rocky Mountain Nursery School (*58)
Rooftop Alternative School (*68)
Roosevelt Middle School (*460)
Rosa Parks Elementary School (21213)
Sacred Heart Cathedral Preparatory (1055)
Saint Anne's School (21251)
Saint Anthony Immaculate Conception (399)
Saint Brendan School (21253)
Saint Brigid School (3256)
Saint Cecilia School (*660)
Saint Dominic School (*2445)
Saint Elizabeth School (21266)
Saint Finn Barr School (415)
Saint Gabriel School (355)
St. Ignatius College Preparatory (21241)
Saint James' Preschool (21261)
Saint James School (521)
Saint John Elementary School (9259)
St. Mary's Chinese Day School (21238)
St. Monica School (21322) Saint Paul's Elementary School (*180)
Saint Paul's Littlest Angel Pre-School (*221)
Saint Philip School (6665)
Saint Thomas More School Parents' Club (900)
San Francisco Community School (325)
San Francisco Day School (3509)
San Francisco Educational Services (*66)
San Francisco Friends School (8503)

San Francisco Jr. Adventist Academy (*48)
San Francisco School (*300)
San Francisco School of Circus Arts (*55)
School for Integrated Academics and Technologies SIATECH— (21313)
School of the Arts High School (*45)
2nd Community Prog. at Clarendon (*8500)
Sherman Elementary School (1654)
South San Francisco High School (40094)
Star of the Sea School (21319)
Stepping Stones Preschool (329)
Sterne School (2690)
Stuart Hall High School (*1715)
Sutro Elementary School (1235)
Synergy School (*91)
Tamalpais-Strawberry Preschools, Inc. (1009)
Thurgood Marshall Academic High School (21316)
Tule Elk Park Child Development (21315)
Urban School (*1563)
Wah Mei School (889)
Waldorf School (*999)
Washington High School (2291)
West Portal Parents Club (*5941)
Yick Wo School PTO (*2245)

COMMUNITY GROUPS

7th Avenue Senior Center (21289)
30th Street Senior Center (21296)
Accion Latina (21304)
AcroSports (*639)
ADDIS Light (21386)
AIDS Benefits Counselors (*470)
AIDS Emergency Fund (*1540)
AIDS Housing Alliance of S.F. (*427)
AIDS Legal Referral Panel (*114)
AIDS Memorial Grove (*8560)
AIDS Walk San Francisco (1939)
Alexander Hamilton Post 448 (411)
American Cancer Society (21237)
American Youth Hostels (*426)
Arab Cultural & Community Center (21350)
The Arc San Francisco (5355)
Arriba Juntos (21367)
Art of the Matter (3288)
Arts Expression Society (21267)
ArtSpan (934)
Asian Neighborhood Design (21212)
Asian/Pacific Islander Am. Health Forum (450)
Asian/Pacific Islander Legal Outreach (21287)
Asian/Pacific Islander Wellness Center (*786)
Asian Women's Shelter (21393)
At the Crossroads (21371)
Auxiliary of Little Sisters (892)
Balboa Alumni Association (*1100)
Bay Area Attachment Parenting (211)
Bay Area Ridge Trail Council
Bay Area Wilderness Training (302)
Bay Area Young Survivors (21282)
Bay Area Youth Fund for Education (29415)
Bazaar Bizarre San Francisco (21359)
Bernal Hgts. Neighborhood Center (*515)
BCOA: Black Coalition on AIDS (504)
Big Brothers Big Sisters of the Bay Area (887)
The Big Rumble (21394)
Black Rock Arts Foundation (1900)
Blind Babies Foundation (5016)
Booker T. Washington Community Center (21398)
Breast Cancer Emergency Fund (21331)
Breast Cancer Fund (21405)
Buddhist Church of San Francisco (21346)
California Jug Band Association (21293)
California Native Plant Society (*1424)
California Reinvestment Coalition (21329)
California Revels (*337)
CAL-PEP (510)
Cameron House (21208)
Castro Lions Club (*2584)
Central American Resource Center (21362)
Centro Latino de San Francisco (*1656)
Children of Lesbians/Gays Everywhere (400)
Children's Book Project (*455)
Children's Brain Disease (21219)
Children's Council of San Francisco (*123)

Chinatown Community Development Center (21257)
Chinese Historical Society of America (21291)
Círculo de Vida (21399)
City Car Share (21284)
Clinic By the Bay (21402)
Cole Valley Improvement Association (21369)
Coleman Advocates for Children/Youth (*2602)
Community Board Program (*1542)
Community Educational Services (21223)
Community Housing Partnership (935)
Community Living Campaign (21404)
Community Sherith Israel (2266)
Company Chaddick (656)
Compass Community Services (9995)
Conard House (*149)
Congregation Beth Israel Judea (21400)
Congregation Beth Shalom (*130)
Congregation Sha'ar Zahaz (*1290)
Conservatory of Flowers (21401)
Crohn's & Colitis Foundation of America (21233)
Cultural Integration Fellowship (8502)
Curry Senior Center [formerly North of Market Senior Services – acct 333] (21235)
Daily Acts (21224)
Department of Environment (21365)
Discovery Community, Inc. (21229)
Dolores Street Community Services (*938)
Dream House (*1601)
Embarcadero YMCA (2169)
Family House (502)
Family Link (*317)
Family Service Agency of San Francisco (331)
First 5 California (21270)
First Unitarian Universalist Society of SF (21256)
Florence Crittenton Services of S.F. (*291)
Flowers Heritage Foundation (21375)
Fort Mason Community Garden (21279)
Friends of Camp Mather (21368)
Friends of San Francisco City Planning (21205)
Friends of Sharon Art Studio (*1033)
Friends of the S.F. Public Library (*14)
Friends of the Urban Forest (1070)
Friends of Walter Haas Park (140)
Gamelan Sekar Jaya (6485)
The Garden Conservancy (21302)
Garden for the Environment (780)
Gay and Lesbian Medical Assn. (*211)
Gay/Asian Pacific Alliance (21311)
Gay/Lesbian All. Against Defamation (*1360)
General Assistance Advocacy Project (278)
Give Me Shelter Cat Rescue (885)
Glen Park Festival (21318)
Global Services Corps (21376)
Grattan Child Development Center (21332)
Great Gorilla Run (21217)
Groceries for Seniors (21307)
Groundworks Opportunities (21392)

Habitat for Humanity (*4319)
Haight Ashbury Food Program (*1525)
Haight Ashbury Free Medical Clinic (*333)
Haight Ashbury Improvement Assn. (890)
HANC Recycling Center (*780)
HANS Bay Area (661)
Health Champions (7999)
Hearing and Speech Center of No. Cal. (21200)
HIV Care (*9000)
Holy Family Day Home (299)
Home Away from Homelessness (903)
Homeless Prenatal Program (995)
H.O.M.E.Y. (21286)
Horses in California, Inc. (21228)
Huck Cancer Ultimate Frisbee Tournament (21373)
Huckleberry Youth Programs (279)
Independent Arts & Media (21364)
Independent Living Resource Cntr. of S.F. (649)
Insight Meditation Community of S.F. (4755)
International Dyslexia Association (21254)
Intersection for the Arts (446)
Jack and Jill of America, Inc., San Francisco (21349)
Janet Pomeroy Center (21225)
Japanese Community Youth Council (21406)
Jewish Family/Children Services (*1600)
Jewish Healing Center (3530)
Jon Sims Center (1519)
Jones Memorial United Methodist Church (21280)
Josie's Place for Bereaved Youth and Families (21308)
The Junior League of San Francisco (21314)
Kid Stock, Inc. (21214)
Kids in Parks (886)
KUSF 90.3 FM (21309)
La Casa de las Madres (833)
The LAB (the-art-re-grüp, inc.) (2949)
Larkin Street Youth Services (2506)
Leadership High School (21255)
Leap (21218)
Legal Services for Prisoners with Children (21303)
Lesbian/Gay Chorus of San Francisco (*151)
Lesbians in the Visual Arts (870)
Leukemia/Lymphoma Soc. Team Training (1390)
Liberty Numismatic Society (*813)
Lincoln Child Center (*4368)
Literacy for Environmental Justice (21269)
Little Brothers - Friends of the Elderly (909)
Love Every Animal (21403)
Lyon Martin Women's Health Services (1748)
Lyric-Lavender Youth Rec.& Info. Center (*127)
Maitri (*61)
Make-A-Wish Foundation (*785)
Manilatown Heritage Foundation (21262)
Market Street Railway (*870)
The Mary Elizabeth Inn (21374)
Meals on Wheels of San Francisco, Inc. (2375)
Mental Health Association of S.F. (871)
Mercy Housing (111)

Metropolitan Community Church of S.F. (155)
Middle Polk Neighborhood (21305)
Milestones Human Services (*594)
A Miner Miracle (414)
Mission Economic Development Agency (21300)
Mission Neighborhood Center (362)
Most Holy Redeemer AIDS Group (432)
Mothers Organizing Mothers (*69)
Museum of Performance & Design (21377)
National Alliance for the Mentally Ill (5214)
National Marfan Foundation (5829)
National Multiple Sclerosis Society (21351)
Nature in the City (21234)
Neighborhood Parks Council (783)
Network for Elders (657)
New Door Ventures (*1387)
New Leaf Services (1854)
New Music Bay Area (21380)
Next Arts (21231)
Noe Valley Chamber Music (21206)
North & South of Market—Adult Day Health (21285)
No. of Panhandle Neighborhood Assn. (*591)
Northern California Community Loan Fund (21244)
Nort California Supplier Development Council (21260)
NorthWest Bernal Alliance (3181)
Notre Dame des Victoires (5669)
Older Women's League (OWL) (392)
OMI/Excelsior Beacon Center (241)
Other Minds (*267)
Our Family Coalition (21366)
Pacific Asian American Women Bay Area Coalition (PAAWBAC) (21391)
PACT—Plan of Action for Challenging Times (21330)
Page Street Center (21227)
Paradigm Programs (*14061)
Parent's Place (*1602)
Pathways for Kids (33194)
PAWS (539)
Peninsula Temple Beth El (21225)
People Organized to Win Employment Rights [POWER] (21353)
People with AIDS Coalition of S.F. (*2341)
Pets Unlimited (2343)
Planet Drum Foundation (*312)
Planning for Elders in Central City (1371)
Plant*SF (21230)
Playworks (21370)
Positive Resource (*1675)
Precita Eyes Mural Art Center (*348)
Precita Valley Center (21294)
Princess Project (21390)
Project Homeless Connect (21335)
Project Inform (*1965)
Project Open Hand (730)
Public Glass (1750)
Public Interest Clearinghouse (21222)
Purple Moon Dance Project (*3543)

Quan Yin Healing Arts Center (*1748)
Randall Museum Friends (199)
Rebirth and Development, Inc. (5145)
Rebuilding Together San Francisco (328)
Richmond District Neighborhood Center (21268)
Richmond District YMCA (21396)
Rockwood Leadership Program (2649)
Ronald McDonald House of S.F. (1640)
Rose Resnick Lighthouse for the Blind (*214)
Rotary Club of Fisherman's Wharf (21382)
RSVP San Francisco (21328)
Russian Hill Neighbors (1822)
Sacred Heart Cathedral Preparatory (21295)
SAGE Project (901)
Saint Anthony Foundation (8500)
Saint Francis Foundation (21342)
Saint Luke's Hospital Foundation (*3555)
Saint Vincent De Paul Society (28050)
Sts. Peter & Paul Church and School (6609)
San Francisco Animal Care and Control (1201)
San Francisco Architectural Heritage (21265)
San Francisco Arts Education Project (136)
San Francisco Bay Area Book Council (*125)
San Francisco Beautiful (141)
San Francisco Bicycle Coalition (21220)
San Francisco CASA (833)
San Francisco Children's Art Center (*1231)
San Francisco Circus Center (21340)
San Francisco Conservation Corps (*102)
S.F. Depressive/Manic Depressive Assn. (*900)
San Francisco Dyke March (21288)
San Francisco Education Fund (21378)
San Francisco Experience Corps (3930)
San Francisco Food Bank (*901)
San Francisco Frontrunners (891)
San Francisco Generations, Inc (21341)
San Francisco Lyric Chorus (21321)
S.F. General Hospital Foundation (*89)
S.F. Lesbian/Gay Freedom Band (585)
San Francisco Little League (*2521)
San Francisco Museum of Craft & Design (21210)
San Francisco Organizing Project (21250)
San Francisco Parks Trust (5011)
S.F. Planning & Urban Research (21301)
San Francisco Prime Timers (42674)
S.F. Recreation and Park Department (21248)
San Francisco Senior Center (21207)
San Francisco Shakespeare Festival (662)
San Francisco SPCA (2503)
San Francisco Suicide Prevention (*1913)
S.F. Urban (21397)
San Francisco Urban Service Project (*1406)
San Francisco Vikings Soccer Club, Inc. (2521)
San Francisco Women Against Rape (3543)
S.F. Women's Rehabilitation Found, Inc. (21232)
San Francisco's Promise (501)
Save Japan Dolphins (21388)

SaveNature.org (21203)
Scottish Rite Language Center (21246)
SFGRO (1705)
ShadowLight Productions (*223)
Shalom Bayit Bay Area Jewish Women Working to End Domestic Violence (10102)
Shanti (*1546)
Shih Yu-Lang Central YMCA (234)
Shipyard Artists (884)
Slow Food Nation (21292)
SoMa Community Action Network (965)
Southern Exposure (21274)
Spinsters of San Francisco (21363)
Starr King Openspace (21385)
The Stepping Stone (21387)
Stop AIDS Project (*301)
Streetside Stories (209)
Sunrise Community Pantry (21324)
Sunset Neighborhood Beacon Center (21275)
Sunset Youth Services (391)
Support for Families of Children w/Disabilities (*2601)
Swords to Plowshares (16569)
Talkline (*1757)
Tenderloin Health (*241)
Tenderloin Housing Clinic (21283)
Tenderloin Neighborhood Development (21389)
Tesoro (21221)
TFW Children's Fund (21348)
Twin Peaks Improvement Assn. (*31002)
UCSF Medical Center Auxiliary (21361)
Under One Roof (21243)
UNIFEM (21381)
United Cerebral Palsy of San Francisco (*627)
United Irish Cultural Center, Inc. (21379)
Up On Top After School Program (1187)
Upwardly Global (21372)
Urban Services YMCA of San Francisco (21273)
Urban Solutions (21258)
Victory Outreach San Francisco (21345)
Vietnamese Youth Development Center (21407)
Villa Sinfonia Foundation (21247)
Visitation Valley Community Center (*50)
Visual Aid, Artists for AIDS Relief (*720)
Walden House (520)
Wallenberg Community Found (21245)
Woman, Inc. (*1537)
Women's Cancer Resource Center (3023)
Women's Community Clinic (21252)
World Bridges (1205)
Yu Yee Children's Services (21277)
Youth Life San Francisco (5222)
Zeum (*111)
Zoo II (21276)

The COLE HARDWARE Calendar - July

SUNDAY	MONDAY	TUESDAY	WEDNESDAY	THURSDAY	FRIDAY	SATURDAY
				1	2 Sale	3 Sale
4 Sale	5 Sale	 Star Spangled Savings Sale July 2-5				10 Plant Sale at Strybing Arboretum
Independence Day				8 THE SF PLAY HOUSE COLE HARDWARE Fantasticks Night see page 10 for details	9	
11 SIDEWALK SALE Mission Street	12	13	14	15 Last day to get SALE PRICES on JULY HOT DEALS!	16	17 SIDEWALK SALE Cole Street
18	19 COMMUNITY SAVINGS DAYS Special Community Members SAVE 20% see page 13 for more details	20	21 SIDEWALK SALE Cole Fox	22	23	24 SIDEWALK SALE Polk Street
25	26 Student Monday	27 Teacher Tuesday	28 Senior Wednesday	29 Military Thursday	30	31 E-Waste Drop Off! see page 10 for details
COMMUNITY SAVINGS DAYS						



Our founder Dave Karp, Purveyor of Hardware Wisdom

The COLE HARDWARE credo...

Commitment to savings:

Frequent Shoppers Club members receive a 5% annual dividend on purchases.

Commitment to the community:

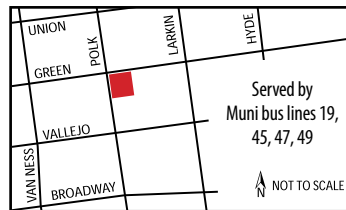
We donate 10% of what you spend to local charities (you get to designate one of our school or community partner beneficiaries; see page 15).

Commitment to you: Over 80 years of guaranteed customer satisfaction.

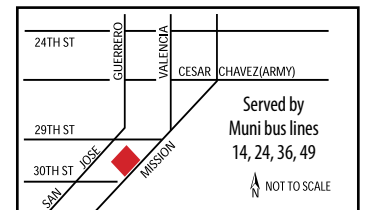
Commitment to the environment:

Reducing our footprints by implementing environmentally sound practices in our stores.

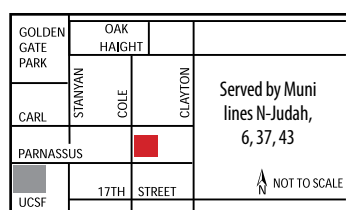
Four locations serving you every single day of the year!



COLE HARDWARE
 2254 Polk Street
 San Francisco, CA 94109-1820
 (at Green Street on Russian Hill)
 415/674-8913 Fax: 674-8917
 Weekdays 8:00 am-8:00 pm
 Weekends 9:00 am-7:00 pm



COLE HARDWARE
 3312 Mission Street
 San Francisco, CA 94110-5009
 (at 29th Street—near Safeway)
 415/647-8700 Fax: 647-6554
 Weekdays 7:00 am-7:30 pm
 Weekends 8:00 am-7:00 pm



COLE HARDWARE
 956 Cole Street
 San Francisco, CA 94117-4316
 (at Parnassus—near U.C. Medical Center)
 415/753-2653 Fax: 753-0957
 Weekdays 7:00 am-7:30 pm
 Weekends 8:00 am-7:00 pm



COLE FOX HARDWARE
 70 4th Street
 San Francisco, CA 94103-3124
 (downtown bet. Market and Mission)
 415/777-4400 Fax: 777-4453
 Weekdays 8:00 am-7:30 pm
 Weekends 9:00 am-5:30 pm

COLE HARDWARE reserves the right to limit quantities to stock on hand and to correct printed errors. Items are similar if not identical to printed illustrations. If an item is out of stock, we can offer a suitable replacement or a "rain check" for the advertised item. We strive for complete customer satisfaction.

Contact the **Hardware Hotline** at 415/753-2653 ext. 5 or e-mail hotline@colehardware.com.



web: www.colehardware.com
 Contractor's License #708403
service@colehardware.com

E-mail us with any comments or questions at hotline@colehardware.com.

© COLE HARDWARE 2010. The **Hardware Hotline** is printed on paper with 40% post-consumer product using soy inks by Folger Graphics, Inc., a Green Business Printer.

July 2010